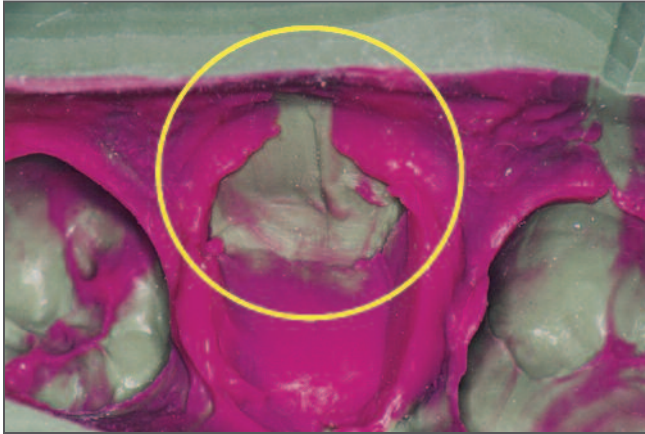


Common Final Impression Errors



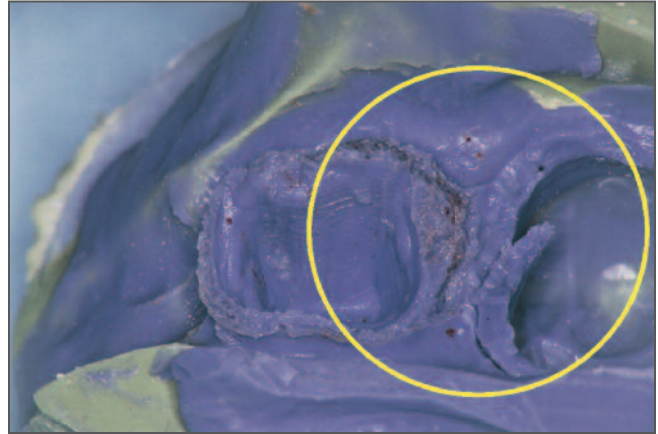
VOIDS & BUBBLES

Problem:

- Improper syringe technique.
- Air incorporated into syringe while loading material into syringe or tray.
- Blood/saliva contamination around preparation.

Solution:

- Always “push” the material ahead of the syringe tip during syringing. Keep expressing syringe material past starting location.
- If using a syringe, load from the front rather than the back.
- Ensure no excess/pooling of moisture.



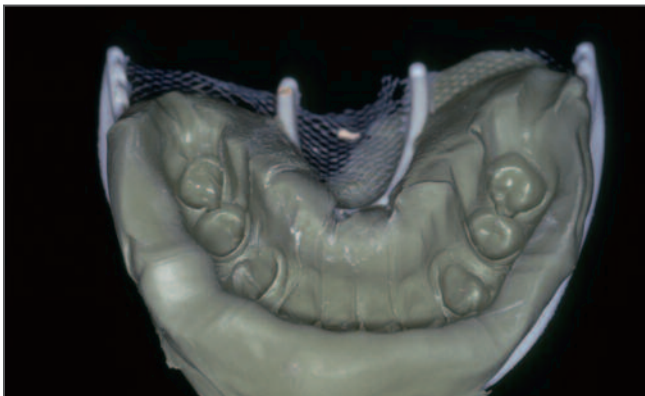
TEARING

Problem:

- Poor tear strength of impression material.
- Inadequate space created during retraction.

Solution:

- Use Aquasil® Ultra+ Impression Material.
- Ensure > 0.5mm of lateral retraction circumferentially around finish line. The greater the bulk of impression material the more resistance to tearing.



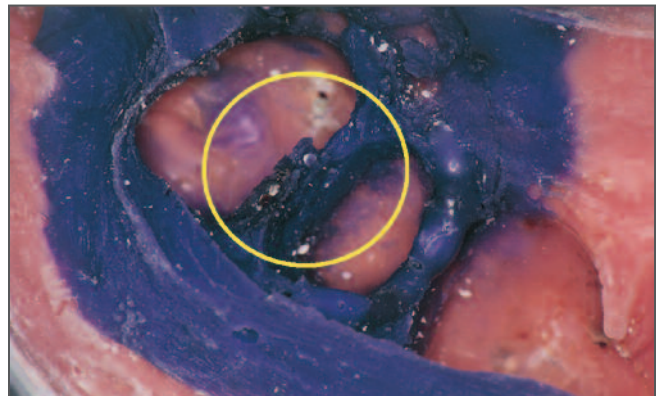
PULLS & DRAGS

Problem:

- Timing of wash and tray materials not synchronized.
- Tray seated too late.
- Tray movement during material setting.

Solution:

- Use a timer to not exceed work time.
- Seat the tray as soon as preparation syringing is complete.



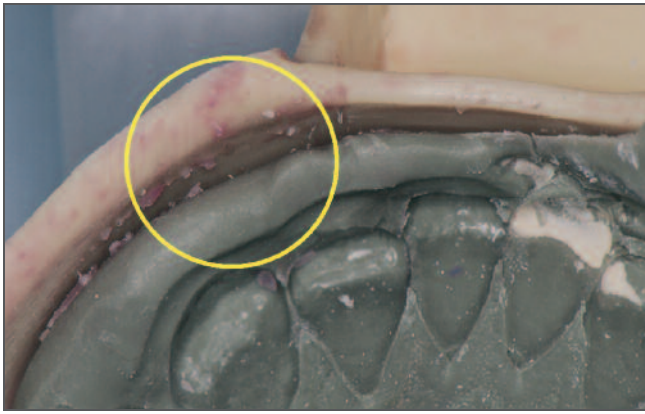
INADEQUATE MARGINS

Problem:

- Insufficient Tissue Management.
- Insufficient wash material.

Solution:

- Ensure good tissue management. At least 0.5mm apical and 0.5mm laterally. No gingivitis or “pumping” sulcus. Clean field is critical.
- Keep syringe tip immersed in material and sulcus and push the material 360° around sulcus.



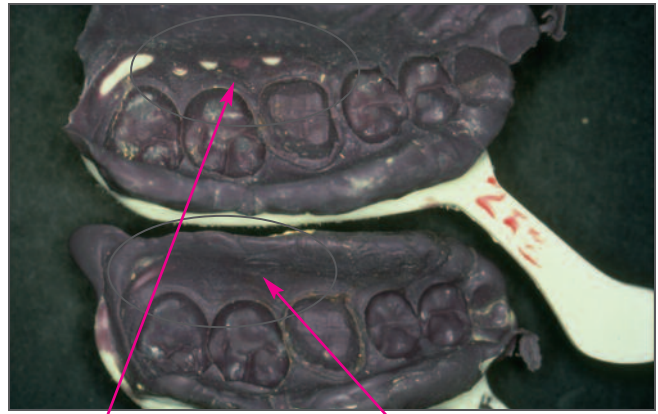
INADEQUATE TRAY ADHESION

Problem:

- Tray adhesive not used or applied properly.
- The impression material can shrink away from the tray causing distortion that results in a reproduction smaller than the tooth.

Solution:

- Apply one thin even coat of adhesive to tray covering all areas of contact between tray and impression material.
- Follow instructions for use of tray adhesive.



INCORRECT

CORRECT

TISSUE CONTACT WITH TRAY

Problem:

- Size and shape of tray is not correct
- Tray is not seated correctly

Solution:

- Fill tray 2/3 full. Use more wash material around preparation and adjacent teeth.
- Seat tray evenly.
- Avoid tooth contact with tray while seating.

ADDITIONAL TIPS:

- Ensure proper occlusion when using double-arch impression trays.
- Bleed material from both cartridge and mixing tip to ensure even dispensing and proper mix.
- Do not store cartridges unsealed and exposed to air.
- Use mixing tips provided by manufacturer too ensure proper mix.
- Use timer from start of mix.

Aquasil® Ultra+ Smart Wetting® Impression Material

Complement good technique with a no compromise final impression material!



+ INTRAORAL HYDROPHILICITY

CAPTURE DETAIL

+ INTRAORAL TEAR STRENGTH

KEEP DETAIL

+ PRECISION DELIVERY AND SPEED

IDEAL WORK AND SET TIMES

©2016 Dentsply Sirona Inc. All rights reserved. MLA-578003 (8/11/16)

