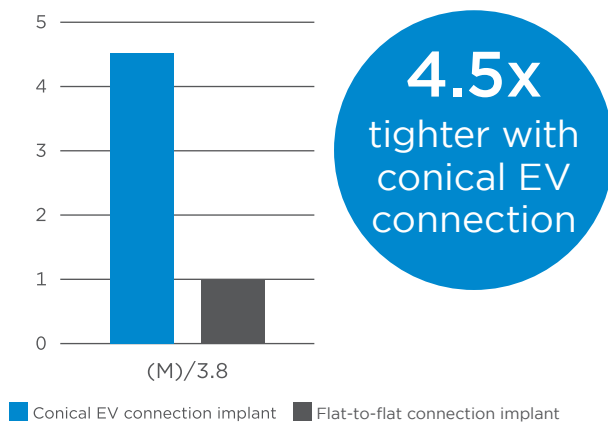


The implant-abutment conical EV connection outperforms flat-to-flat design in leakage and fatigue strength test

INTERNAL TEST RESULTS FROM RESEARCH AND DEVELOPMENT WITH DENTSPLY SIRONA PRODUCTS

A new implant design features the internal conical EV connection and OsseoSpeed surface technology from Astra Tech Implant System for enhanced osseointegration, precision & esthetics.

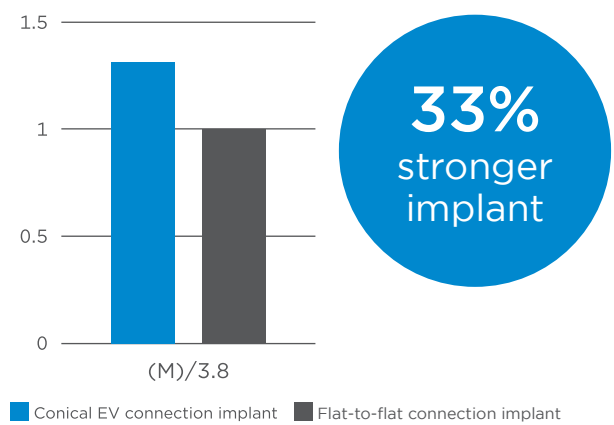
Leakage test



The internal conical EV connection withstands higher loads and is tighter compared to a flat-to-flat connection.

Leakage test was performed under cyclic loading according to ISO 14801:2016

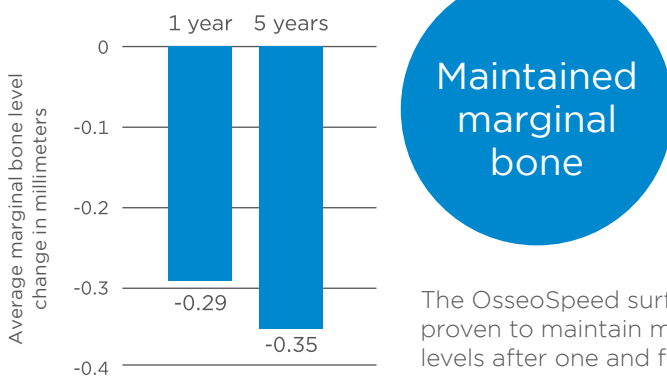
30° fatigue strength



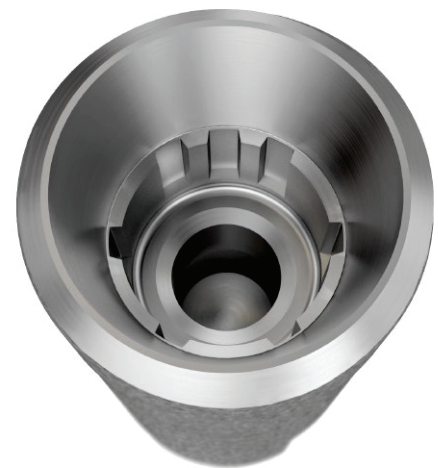
The implant-abutment EV connection and the titanium Grade 4B provide a higher safety margin to loads.

Fatigue strength according to ISO 14801:2016

Marginal bone level change



The OsseoSpeed surface is clinically proven to maintain marginal bone levels after one and five years*.



*Norton MR, Astrom M. The influence of implant surface on maintenance of marginal bone levels for three premium implant brands: A systematic review and meta-analysis. Int J Oral Maxillofac Implants 2020;35(6):1099-111. [Abstract](#)

Follow Dentsply Sirona for the latest in implant dentistry



www.dentsplysirona.com/implants/science

