



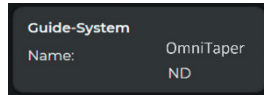
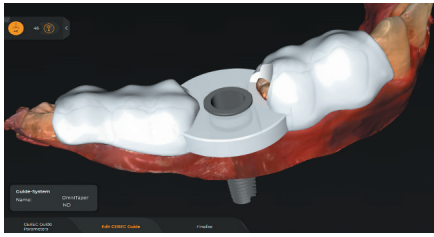
Update-Description inLab CAD SW 22.2.0

This document describes changes and improvements compared to previous version inLab CAD 22.1.1

Date: April 2023

General - New features

Integration of OmniTaper implants for CEREC Guide 3

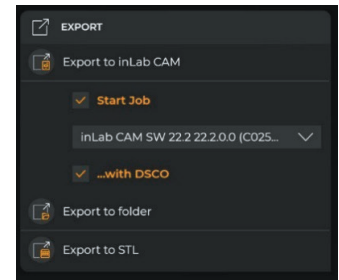


OmniTaper
Implant EV




New export file format for DS Core: “.dsc0”

The restoration can be saved as a *.dsc0 file. This file format can be uploaded to DS Core and processed there. In the future, the restoration including corresponding jaw can be displayed in the DS Core web viewer using *.dsc0 format. This represents an exchange format between inLab CAD SW and DS Core. This new inLab CAD export option is today only possible to use for Crowns & Bridges which are designed for Primeprint.



inLab CAD SW & DS Core Connection

1. Download „DI & CAD/CAM Connector“ from DS Core.  **DS Core Connection**
2. Install it on the same workstation that your inLab CAD or CAM is installed on and open it.
3. To connect your „DI & CAD/CAM Connector“ to DS Core, go to the Connection to DS Core section and log in with your account credentials.
4. Upon successful connection, your inLab workstation will be visualized in your Devices & Media Sources in DS Core and you can seamlessly import .dxd files into inLab CAD via DS Core.

New materials

- Activation CEREC Tessera Abutment in CE Region - Not USA yet
- Ivoclar - name adjustment from “Ivoclar Vivadent” to “Ivoclar”
- Shofu - new disc material “ZR Lucent Ultra”

Quality improvement and stability

Dentsply Sirona continuously improves the quality of its products. As part of this release, several improvements have been made and known software bugs have been fixed. We always recommend using the latest software version.

Bugfixes and Quality

- Improvements on user interaction with “Order Details” and “Edit Order”.
- Failure in virtual layer creation for Preform Abutment case has been fixed.
- Crashes during design computation on an implant bridge case has been fixed.
- Models can now be created also if abutments are virtually seated
- Issue of double patient names when exported from inLab CAD to inLab CAM has been resolved.
- Show marks tool is now available in Model phase again.
- One further scenario of crash during denture designs has been fixed.
- Unhandled Exception should not occur anymore in scan phase when switching between objects.
- Software should not crash anymore when the correlate button is pressed in scan phase and then switch to Model phase.
- Missing pictogram for shade analysis tool has been added.
- Processing mode has incorrectly been set to milling although designed for Generic 3D Printer. This issue has been resolved.
- In rare situation the software could freeze when using the cut tool directly after replace tool. This problem should not occur anymore.
- Indications and case details panels become partially hidden when modifying software window size. The user interface has been optimized in that area.

Dentsply Sirona

Sirona Dental Systems GmbH
Fabrikstraße 31, 64625 Bensheim, Germany
dentsplysirona.com

THE DENTAL
SOLUTIONS
COMPANY™

