

# Simplant<sup>®</sup>

## CBCT to Simplant<sup>®</sup>

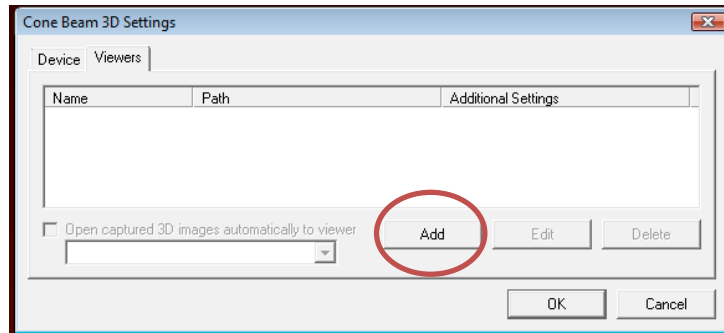
- Automated export protocol for Soredex

This document describes the Dicom export procedure for the Soredex cone beam scanner and this by using and automated import in Simplant. This solution only works when the Simplant software and the Scanora software is installed on the same physical computer.

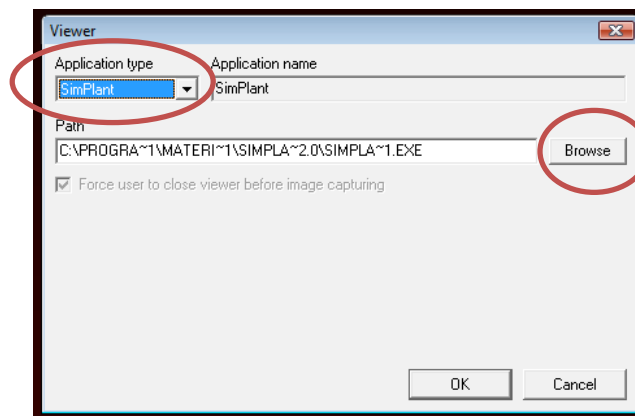
## Part 1: Scanora software

It is possible to configure the Scanora software to push the Dicom images in Simplant automatically.

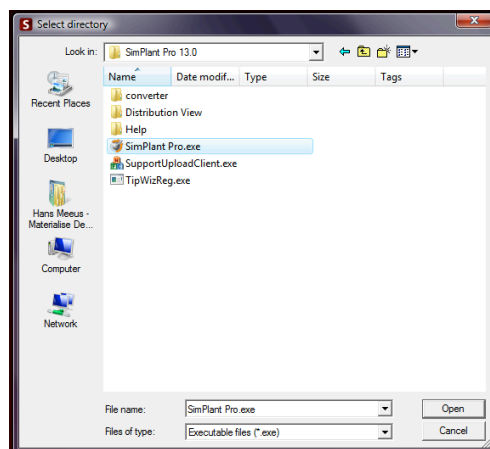
1. In Scanora go to the “Tools” menu and click on “Cone Beam 3D Settings”.
2. Click on the “Add” button.



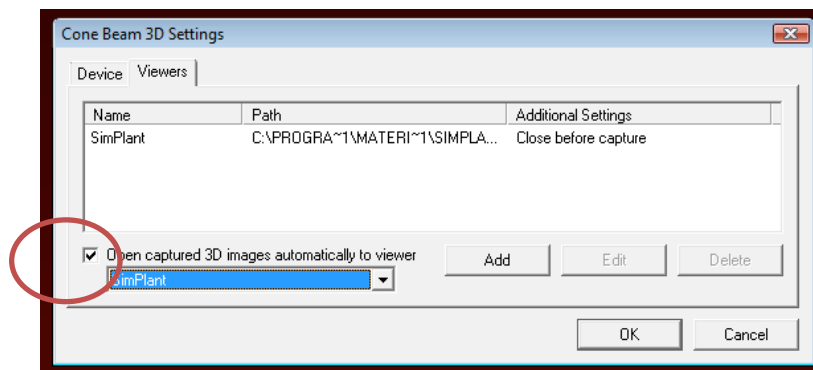
3. In the “application type” choose Simplant.



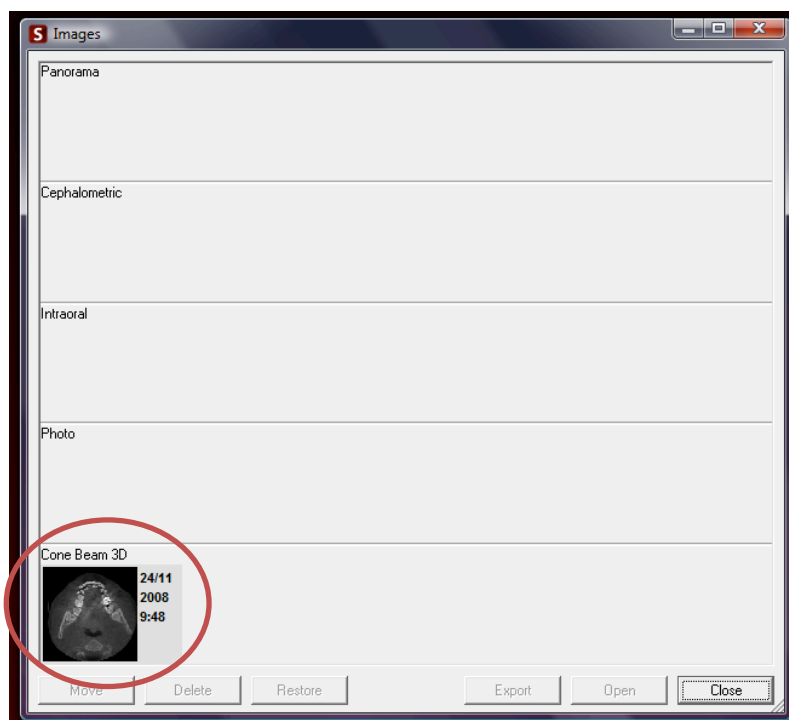
4. In case you have different version of Simplant installed you can choose the desired version by clicking on the “Browse” button.



5. Finally select the “Open captured 3D images...” checkbox and click “OK”

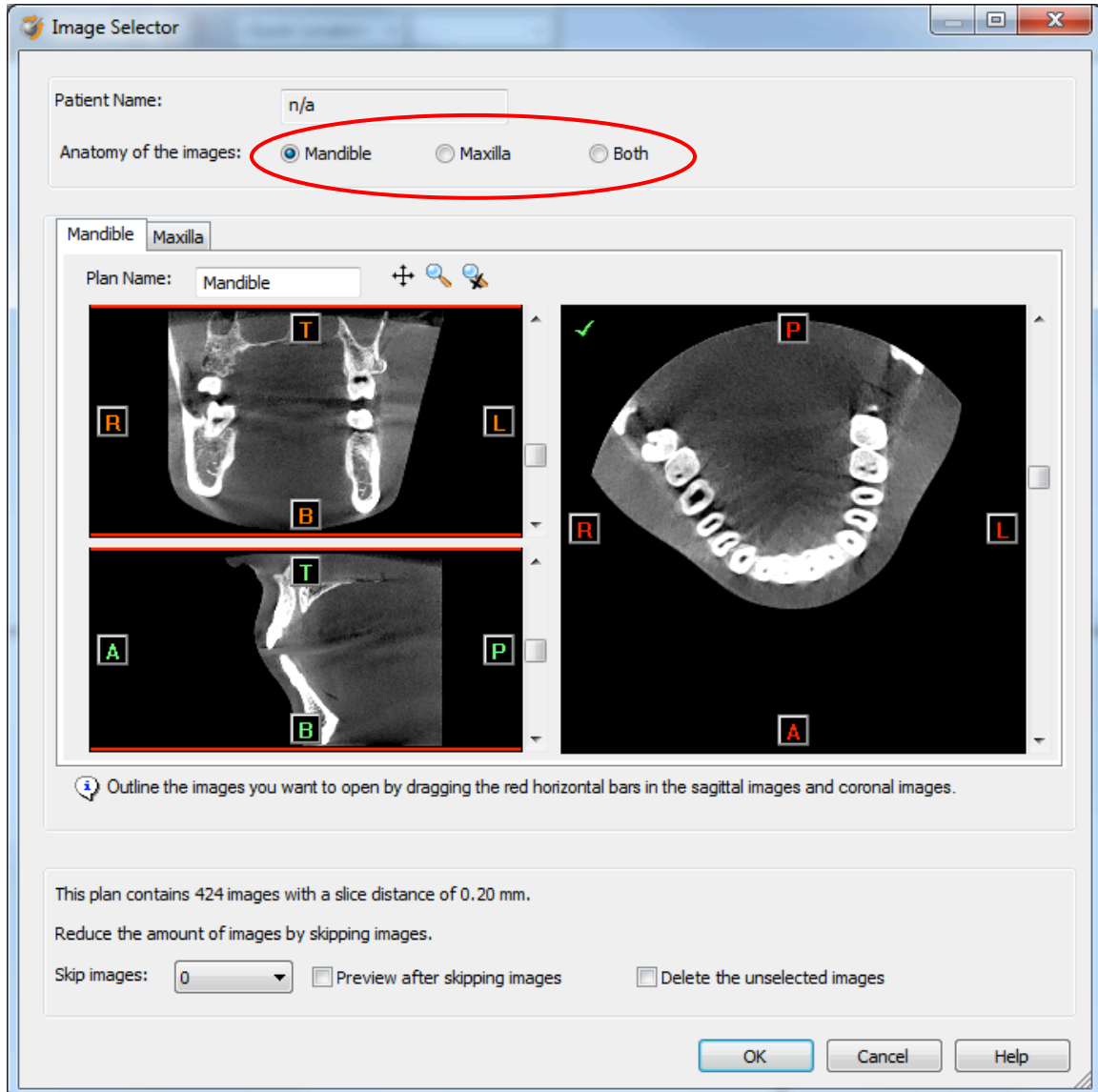


6. When you now double click on the image set in Scanora the Simplant software will start and show you directly the “image selector dialog box”.

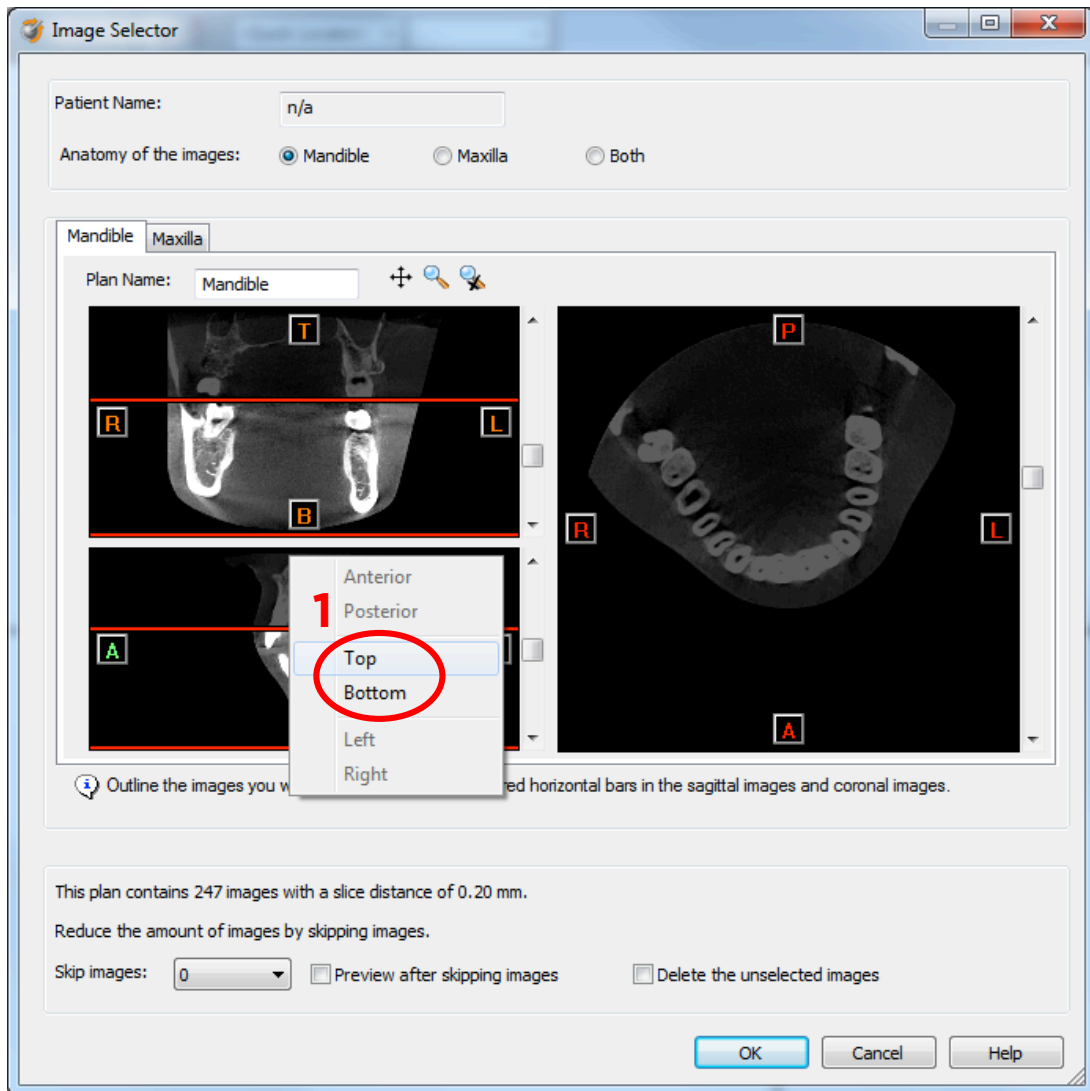


## Part 2: Simplant® software

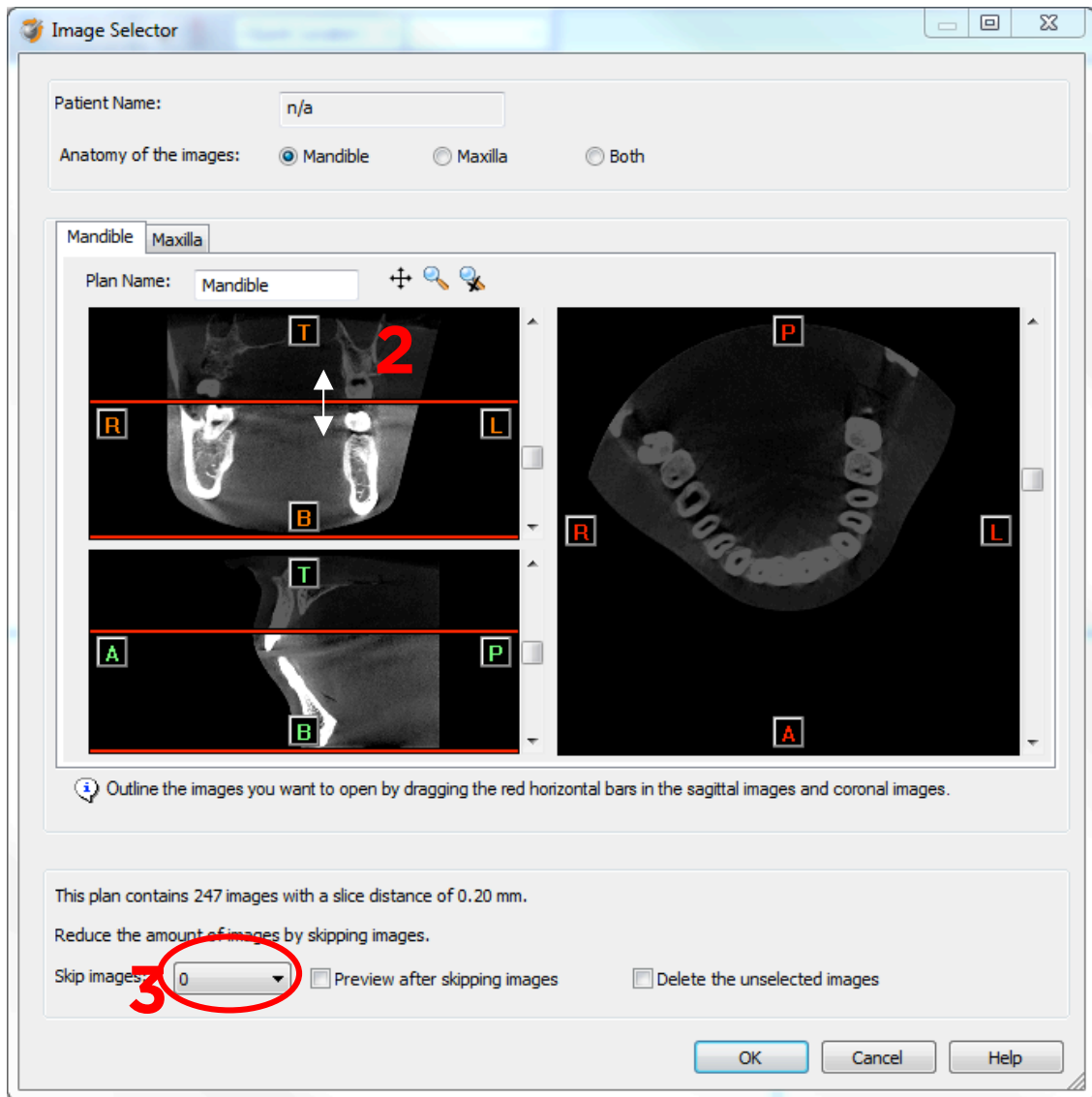
1. The Simplant Image Selector dialog is prompted to the user. In this dialog, user selects the corresponding anatomy of the frame set, and selects the required images for importing.



If one or more orientation parameters were not exported, review if the orientation that was set is correct. The orientation can be adjusted by selecting the correct orientation parameter in the dropdown (1).



In order to reduce software load, you can REMOVE UNNECESSARY IMAGES from the start or the end of the frame set by dragging the red lines in the coronal and sagittal view.(2)



In order to further reduce software load, you can remove axial images by selecting the skipped image count different from 0 (for example: skip images = 1 selects every second image, skip images= 2 selects every 3<sup>rd</sup> image) (3).

When ready, press OK and the software imports the selected frame set to Simplant.

2. You are now ready to start your planning.

All trademarks and company names are the property of their respective owners. Dentsply Sirona does not waive any rights to its trademarks by not using the symbols ® or ™. 32670648-USX-1610 © 2016 Dentsply Sirona. All rights reserved.

[www.dentsplysirona.com](http://www.dentsplysirona.com)