

# ENDO ACTIVATOR<sup>®</sup>

## TECHNIQUE CARD



### ACTIVATE YOUR ENDODONTICS

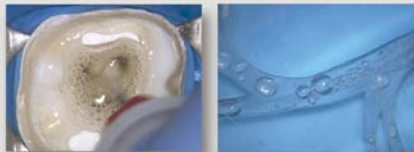
## PRODUCT FEATURES

### EndoActivator Tips

- Snap-on/snap-off design
- Strong, flexible, medical-grade polymer composition
- Color-coded by size
- 22 mm lengths with depth gauge rings at 18, 19 and 20 cpm

### Handpiece/Driver

- Contra-angled design for easy access to posterior teeth
- 3-speed sonic motor provides options of low, medium and high
- Ergonomic, cordless, and battery-operated handpiece



Patent No. 7,261,561 and other patents pending

# ENDO ACTIVATOR

SAFE • EFFICIENT • SIMPLE

## TECHNIQUE SEQUENCE\*

- Prepare canal to produce a fully tapered shape
- Fill pulp chamber with NaOCl, EDTA, or other final rinse solution
- Select the Activator tip that manually fits loosely within 2 mm of working length (tips should not be taken closer than 2 mm from working length)
- Place the barrier sleeve over the Driver to protect the entire handpiece
- Attach the Activator tip over the barrier-protected Driver
- Place the attached Activator tip into the prepared root canal
- Depress the ON/OFF switch to activate solution  
(Note: Switch defaults to high speed, as indicated for cleaning procedures)
- Use a pumping action to move the Activator in short, 2-3 mm vertical strokes
- Hydrodynamically agitate the intracanal solution for 30-60 seconds
- Irrigate, then use intracanal suction to eliminate loose debris
- Repeat the above steps for each intracanal irrigant used

\*Sequence for cleaning root canal systems. For other applications, see Directions For Use.

Artwork and images courtesy of Dr. Cliff Ruddle and Advanced Endodontics. EndoActivator® is a registered trademark of Endo Innovations LLC.

ADVANCED  ENDODONTICS®

Manufactured For:  
Advanced Endodontics  
Clifford J. Ruddle, DDS.  
227 Las Alturas Road  
Santa Barbara, CA 93103  
Manufactured in China



TCEA Rev. 1 5/12

**DENTSPLY**  
TULSA DENTAL  
SPECIALTIES

Distributed By:  
**DENTSPLY Tulsa Dental Specialties**  
DENTSPLY International, Inc.  
608 Rolling Hills Drive  
Johnson City, TN 37604  
1-800-662-1202  
1-800-597-2779 (fax)  
[www.tulsadentalspecialties.com](http://www.tulsadentalspecialties.com)