

IMPORTANT ADVICE*

- Use a rubber dam system during the endodontic procedure
- Don't let the file or the lip clip come into contact with metallic dental structures
- Moisten an extremely dry canal with Glyde™ file prep to help provide a stable reading
- Dry the access cavity
- Use a file that matches the canal diameter
- Teeth with large apices might give false readings
- An apex locator will not work in an obliterated canal
- Root fractures, perforations, deep caries and large lateral canals might give inaccurate results
- It is recommended to take an X-ray prior to the use of an apex locator and compare the information. In case of a clinically relevant discrepancy, take a second radiograph with a file in place at working length
- To avoid over-instrumentation, it is recommended to place the file onto an endo ruler at the point where the Propex® II indicates «APEX» and then subtract a minimum of 0.5 mm from the measured file length

* For a complete set of contra-indications, precautions and operating instructions please refer to the Propex® II User Manual



Dentsply Maillefer • Chemin du Verger 3 • CH – 1338 Ballaigues • Switzerland • www.dentsplymaillefer.com



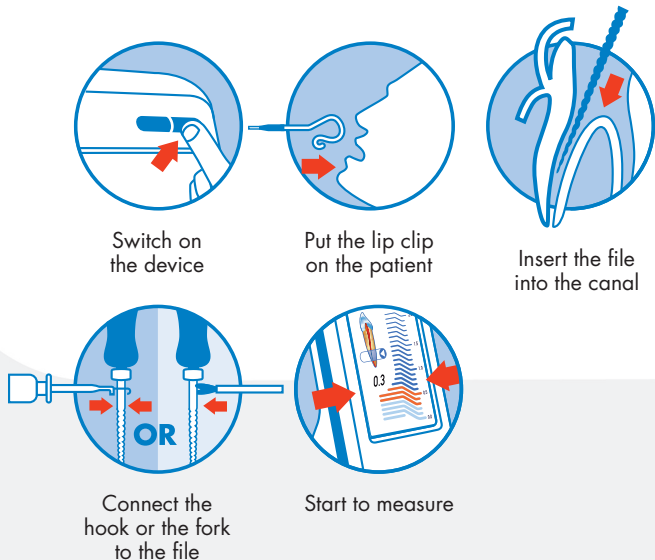
ISR/F19 02 93.E/01/2007 – updated 09/2011



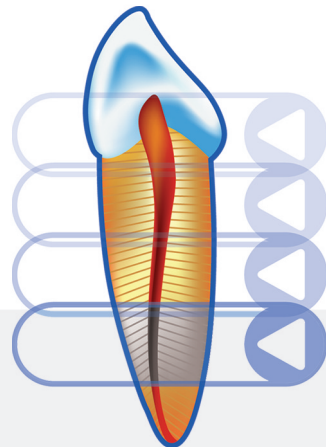
PROPEX® II

NEW GENERATION
APEX LOCATOR
WITH FULL COLORED
DISPLAY



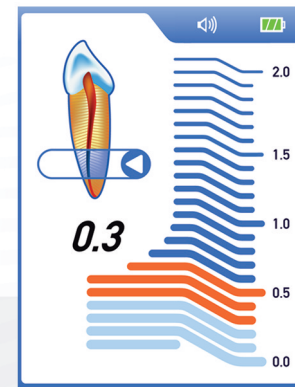


UPPER CANAL ZONE

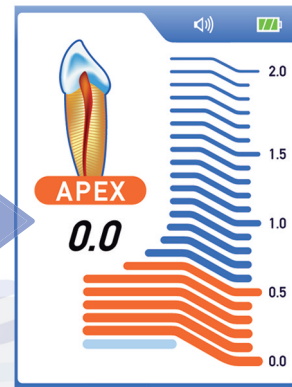


The cursor on the tooth icon indicates the progression of the file in the canal

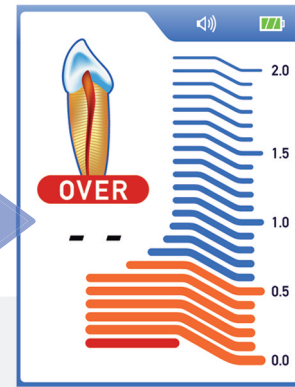
APICAL ZONE



Extended apical zone from 0,9 to 0,0



When apex is reached a solid tone is emitted



When the cursor on the tooth icon shows over this indicates that the file has passed the apex

SHARPEN YOUR ROOT CANAL VISIBILITY

The scale «2.0» to «0.0» does not represent a distance in mm – it indicates the file progression towards the apex