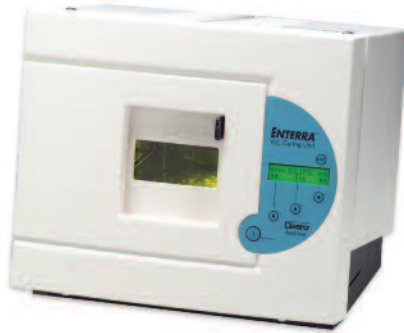


# Enterra®/Eclipse Junior/Interra

## VLC Curing Unit



### Service Manual

Model Number	Voltage	Frequency
9495100/9495102/9495400	100-120V	50-60Hz
9495101/9495151/9495401	200-240V	50-60Hz

### TABLE OF CONTENTS

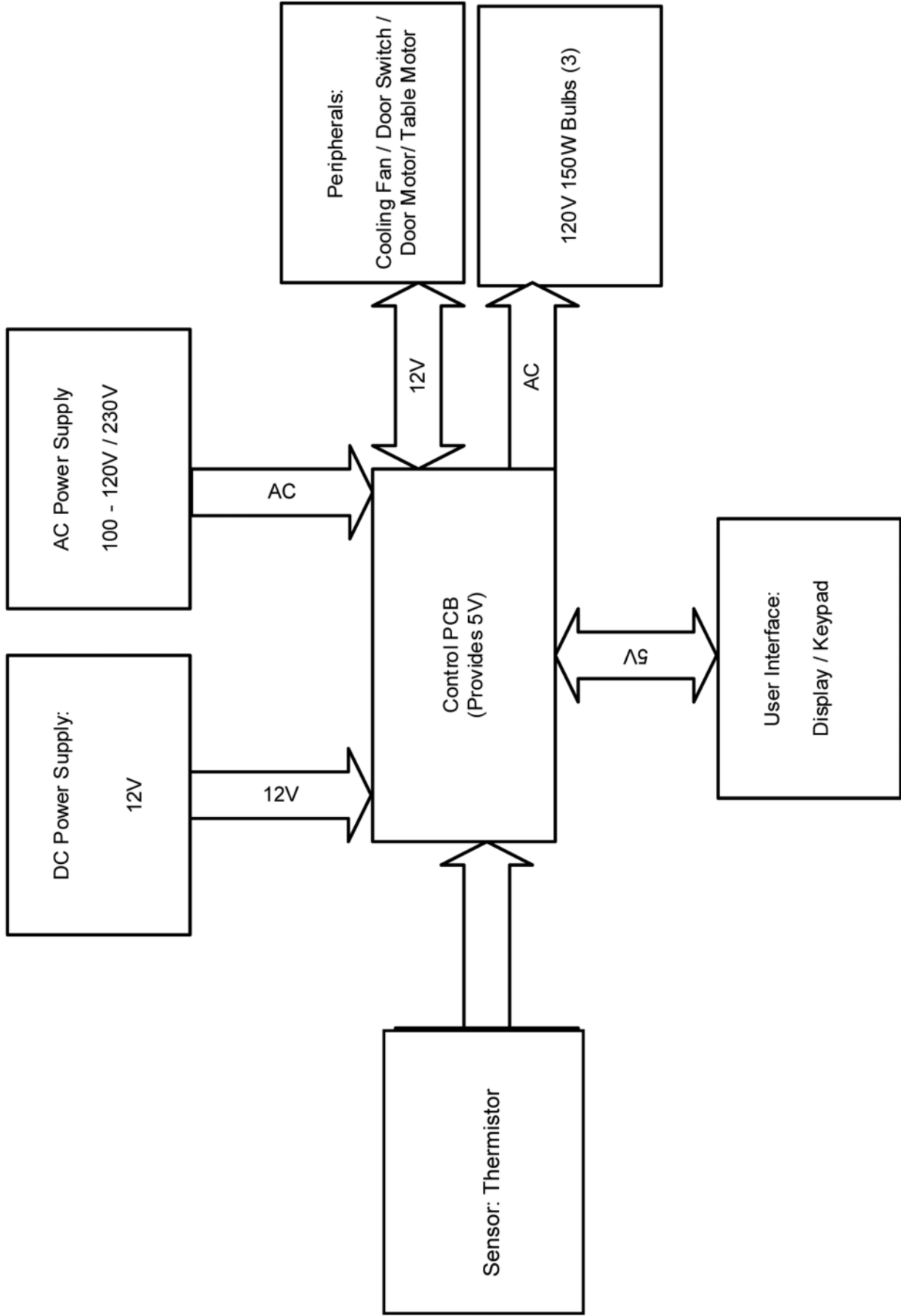
Safety .....	2
Block Diagram.....	3
Exploded View & Service Parts .....	4
Control PCB .....	8
Card Reader PCB .....	9
Control Schematic .....	10
Microprocessor .....	11
Wiring Diagram .....	12
Wiring Hookup .....	14
Product Service.....	15

## **SAFETY**

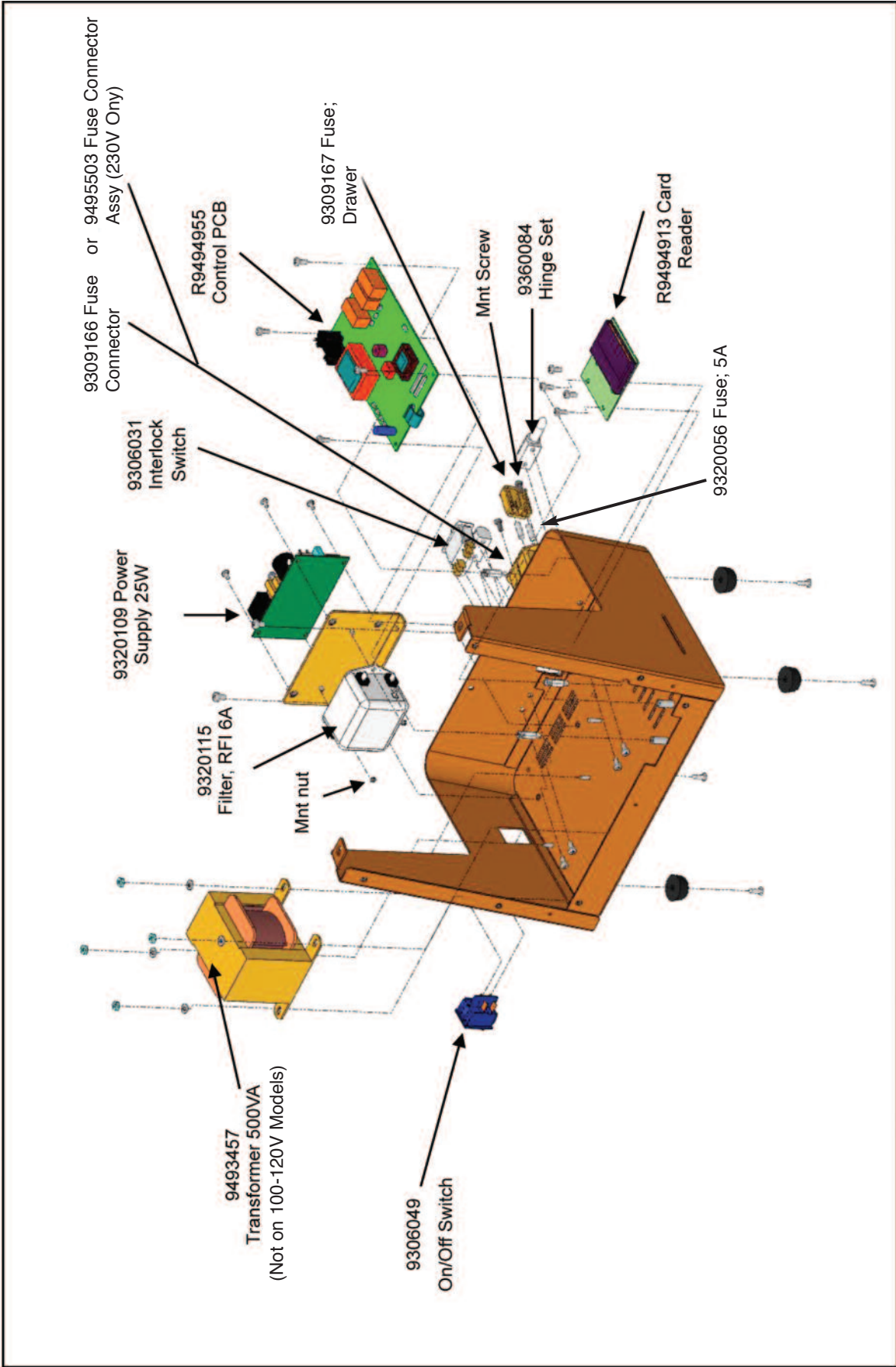
- Use indoors only.
- Never operate the unit in close proximity to combustible materials or place materials on top of the unit.
- The unit must be electrically grounded to a three wire electrical outlet or receptacle. The electrical service provided must be a dedicated line of the proper size according to local electrical codes.
- Unit must be placed in a position that allows the power cord to be easily disconnected from the wall or inlet socket.
- Do not attempt to service the unit until you have read and understand the operations manual.
- Turn off the power switch and disconnect the line cord before attempting to service the unit.
- Do not operate the unit controls with tongs or other tool.
- Do not use solvents or liquid cleaners on the control panel.
- Do not cover the top of the unit or obstruct the rear fans in any other way.

**CAUTION: RISK OF DANGER!  
BURN HAZARD IS PRESENT WHEN COVER IS OPENED.  
USE CAUTION AFTER OPENING COVER.  
METAL SURFACES MAYBE HOT!**

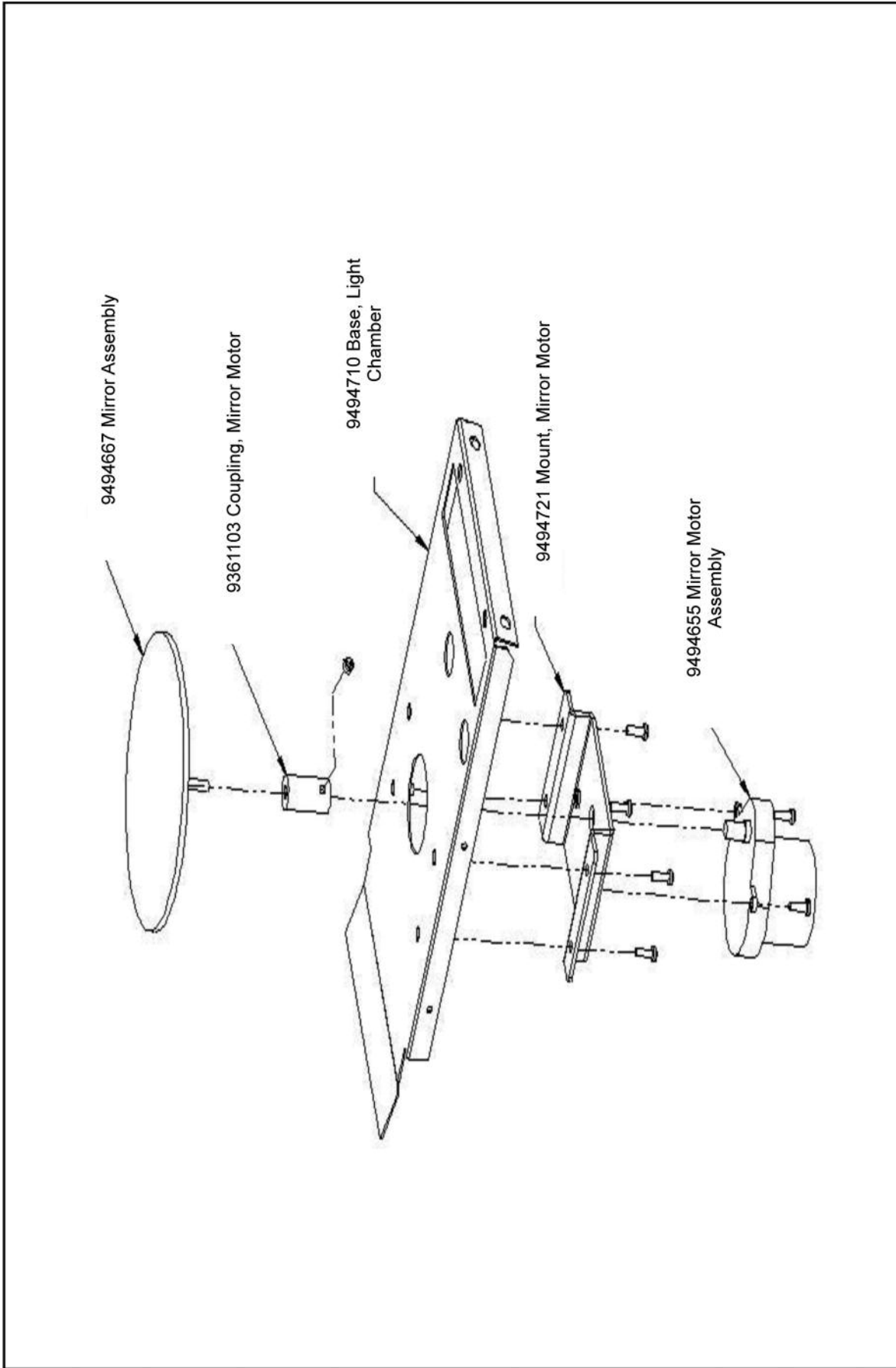
**BLOCK DIAGRAM**



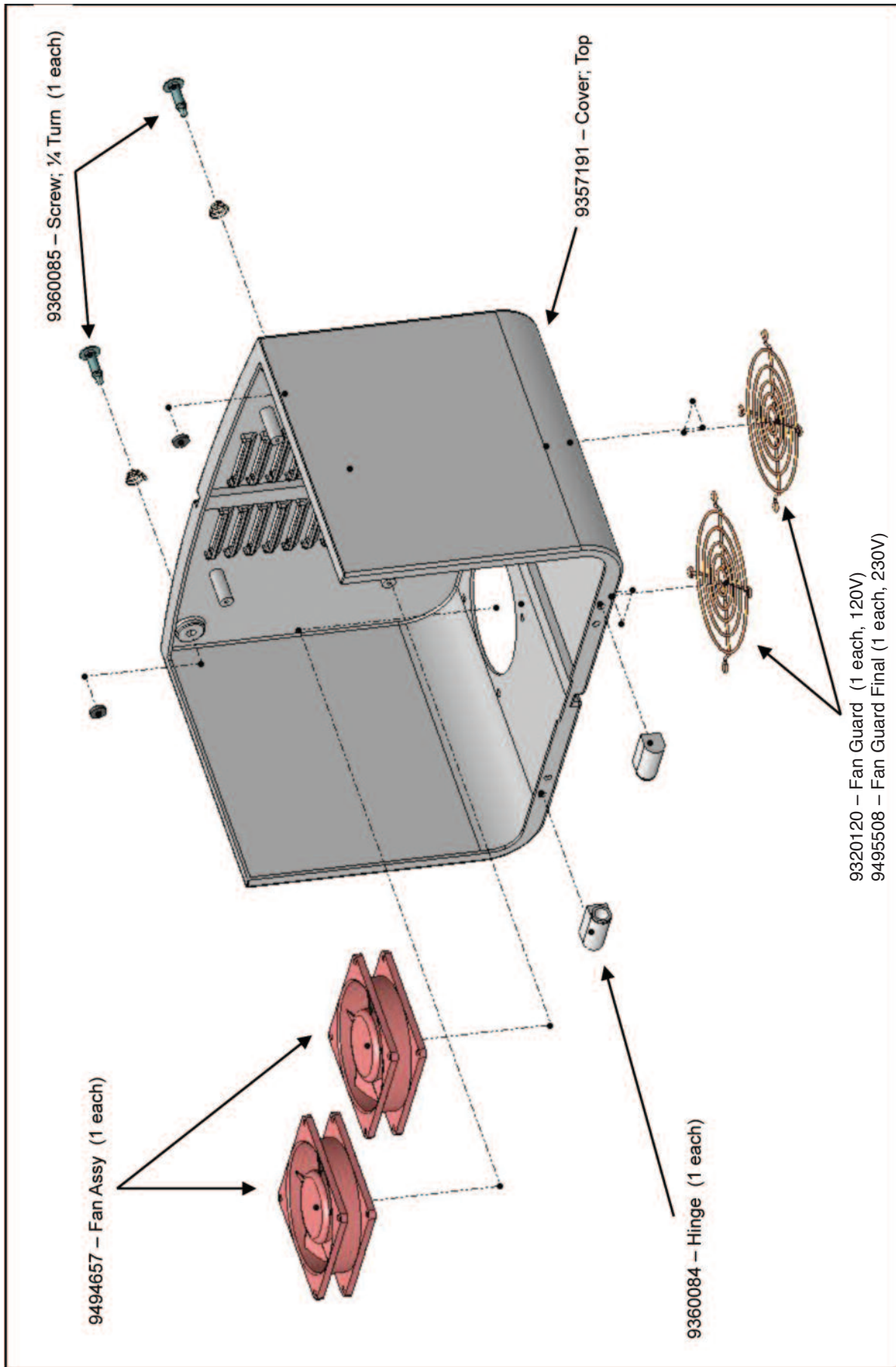
**EXPLODED VIEW & SERVICE PARTS**



**EXPLODED VIEW & SERVICE PARTS CONT.**



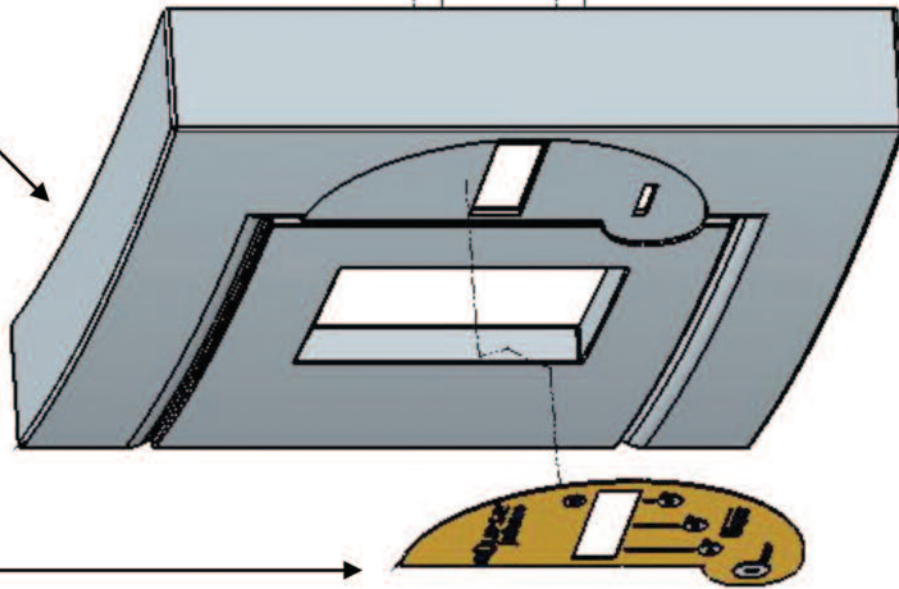
**EXPLODED VIEW & SERVICE PARTS CONT.**



**EXPLODED VIEW & SERVICE PARTS CONT.**

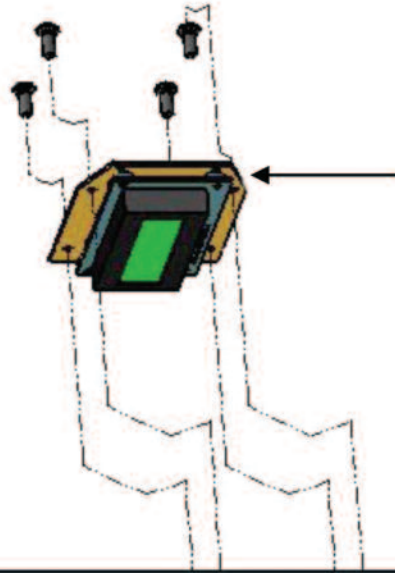
- Enterra** 9354463 – Membrane Switch
- Eclipse Junior** 9354473 – Membrane Switch
- Interra** 9354483 – Membrane Switch

9357190 – Cover, Front



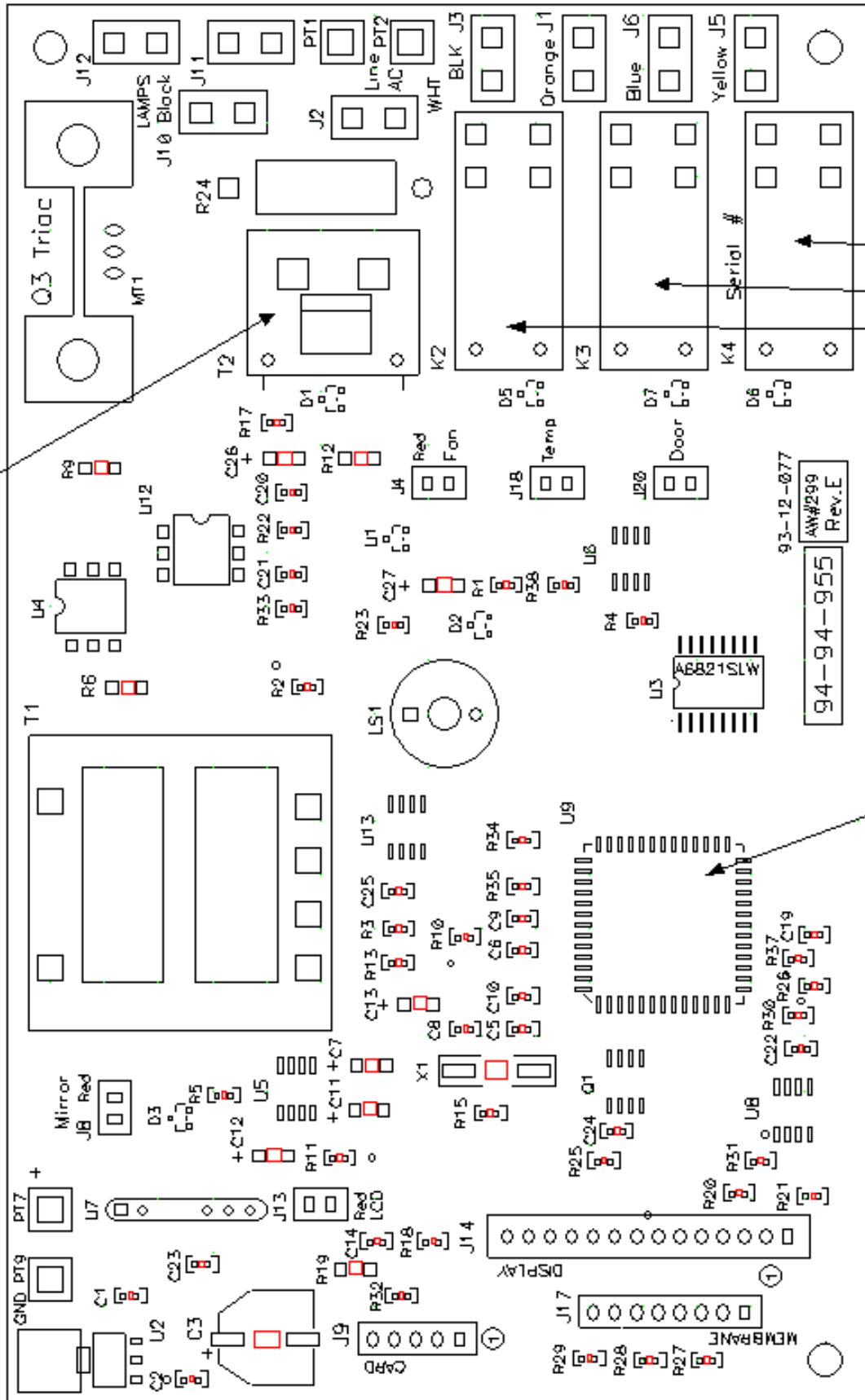
**Additional Parts Not Shown:**

- 9495036 – Cover Door, No Window
- 9495128 – Cover Door, With Window
- 9357192 – Window, Tinted
- 9494666 – Switch, Closed
- 9350030 – Slide, Door
- 9495049 – Bulb Assy, 3 Pack, Eclipse Junior
- 9495033 – Bulb Assy, 3 Pack, Enterra
- 9495264 – Bulb Assy, 3 Pack, iNterra
- 9370186 – Box, Shipping
- 9370187 – Packing Support Set



R9494613 - Display Board Assy

Lamp Current Sense

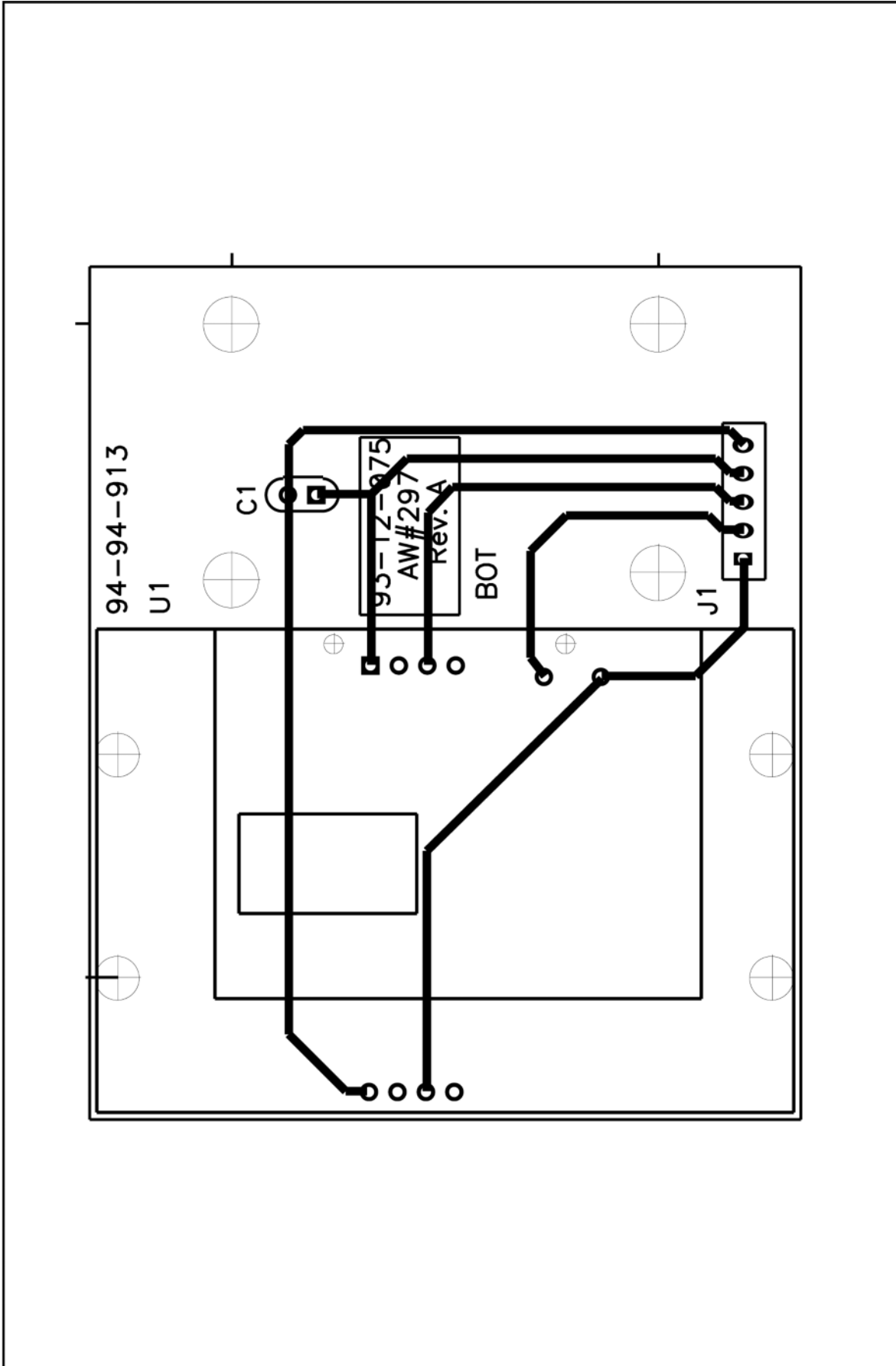


Lamp Relays

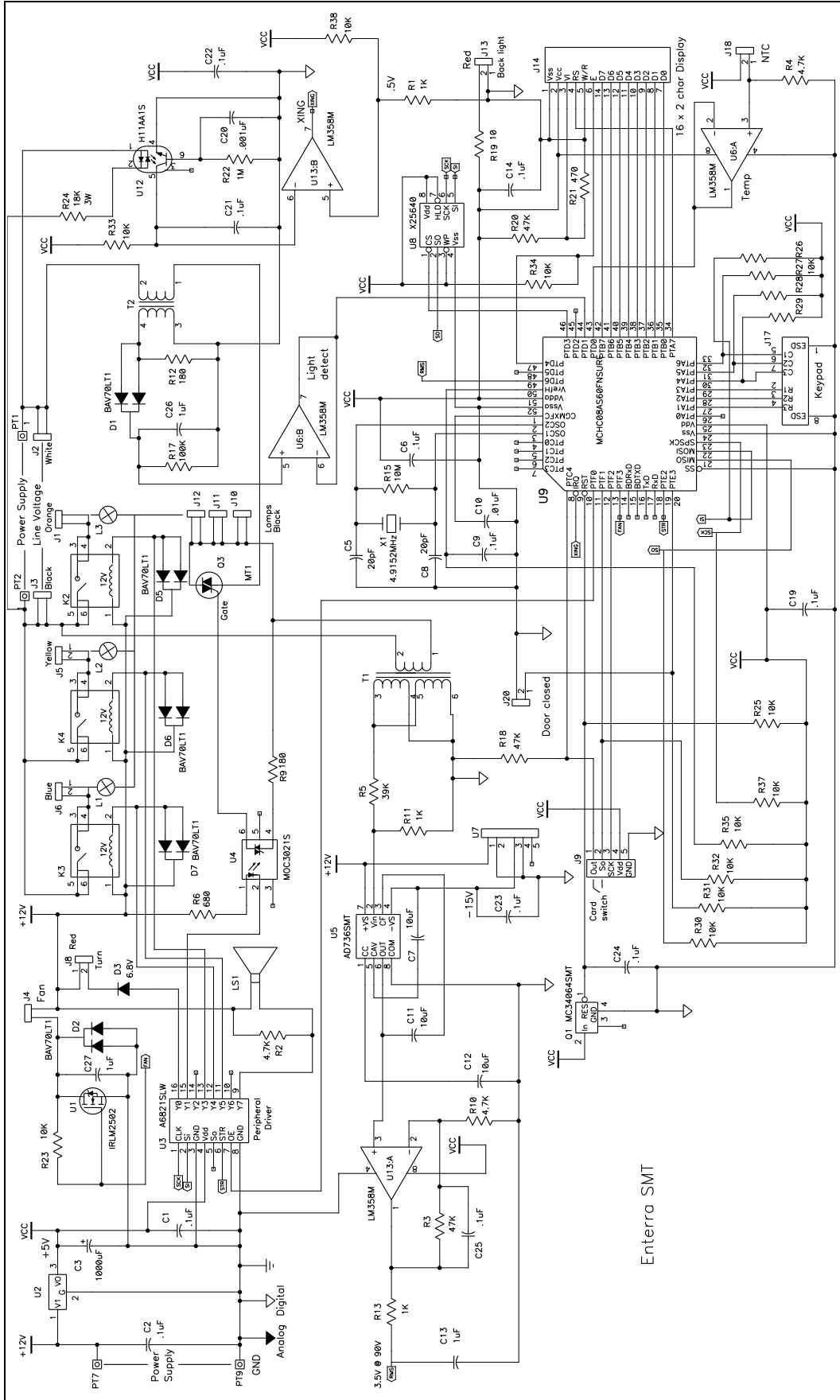
Microprocessor

93-12-077  
94-94-955  
AW#299  
Rev.E

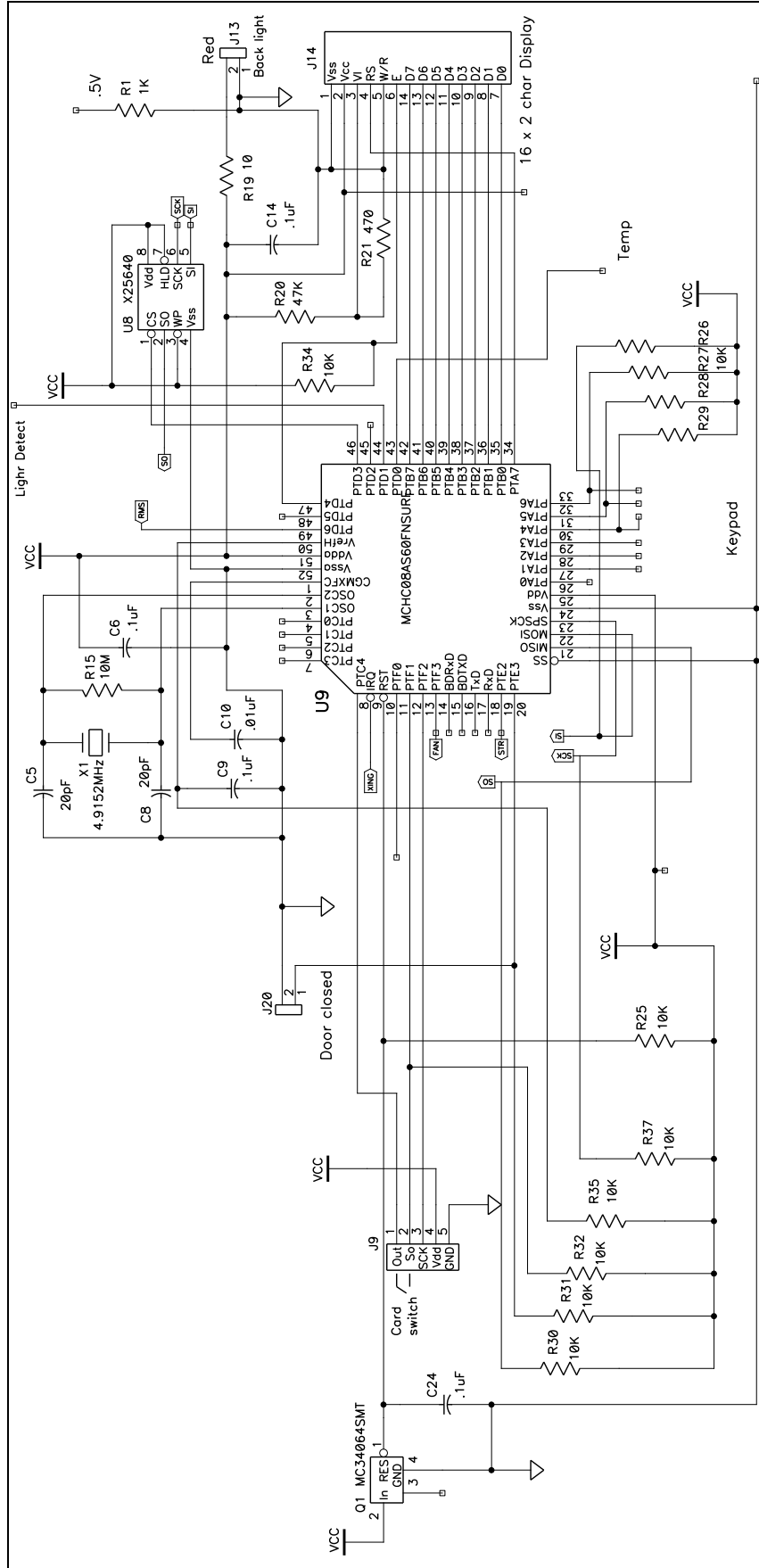
CARD READER PCB



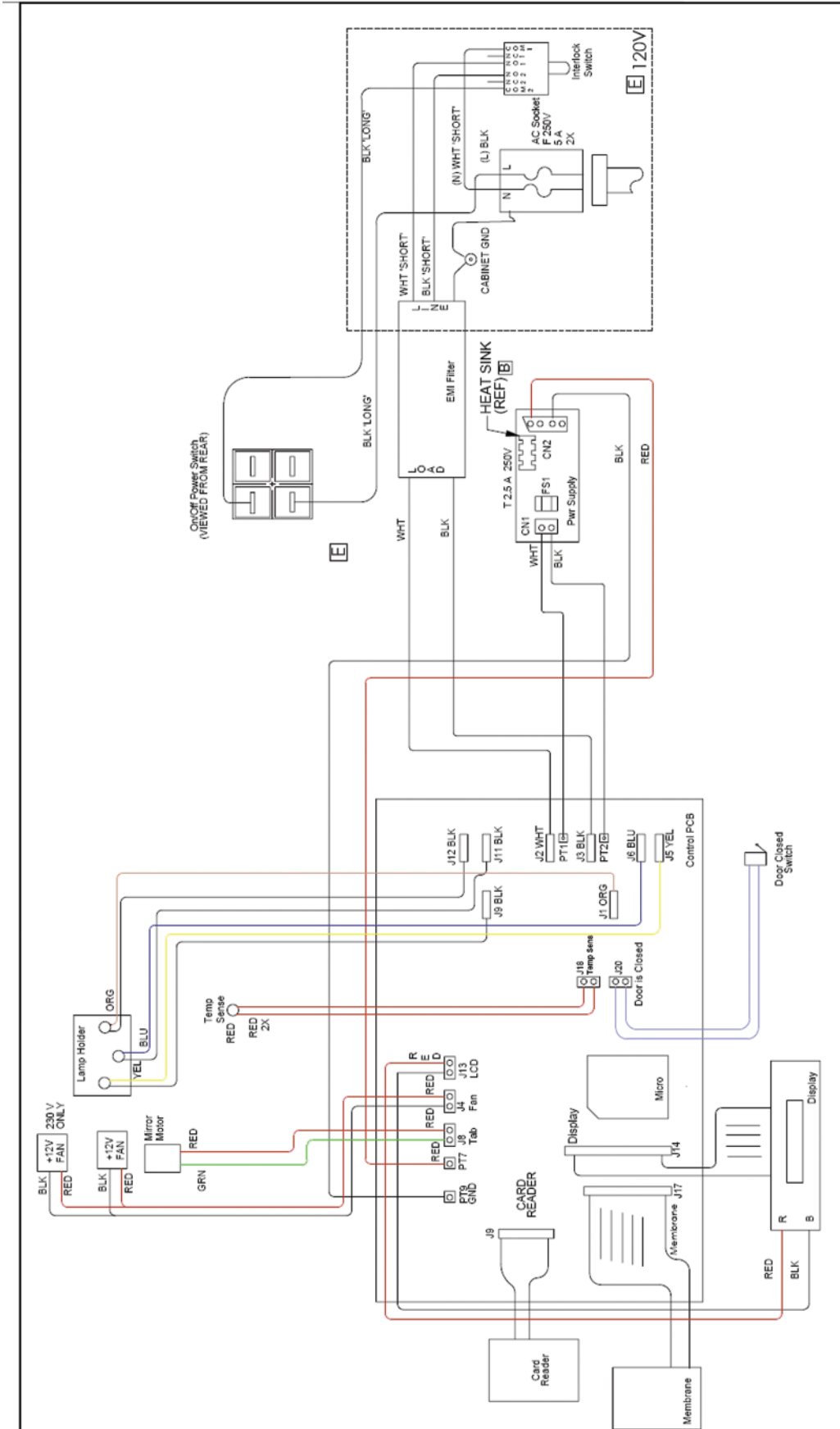
# CONTROL SCHEMATIC



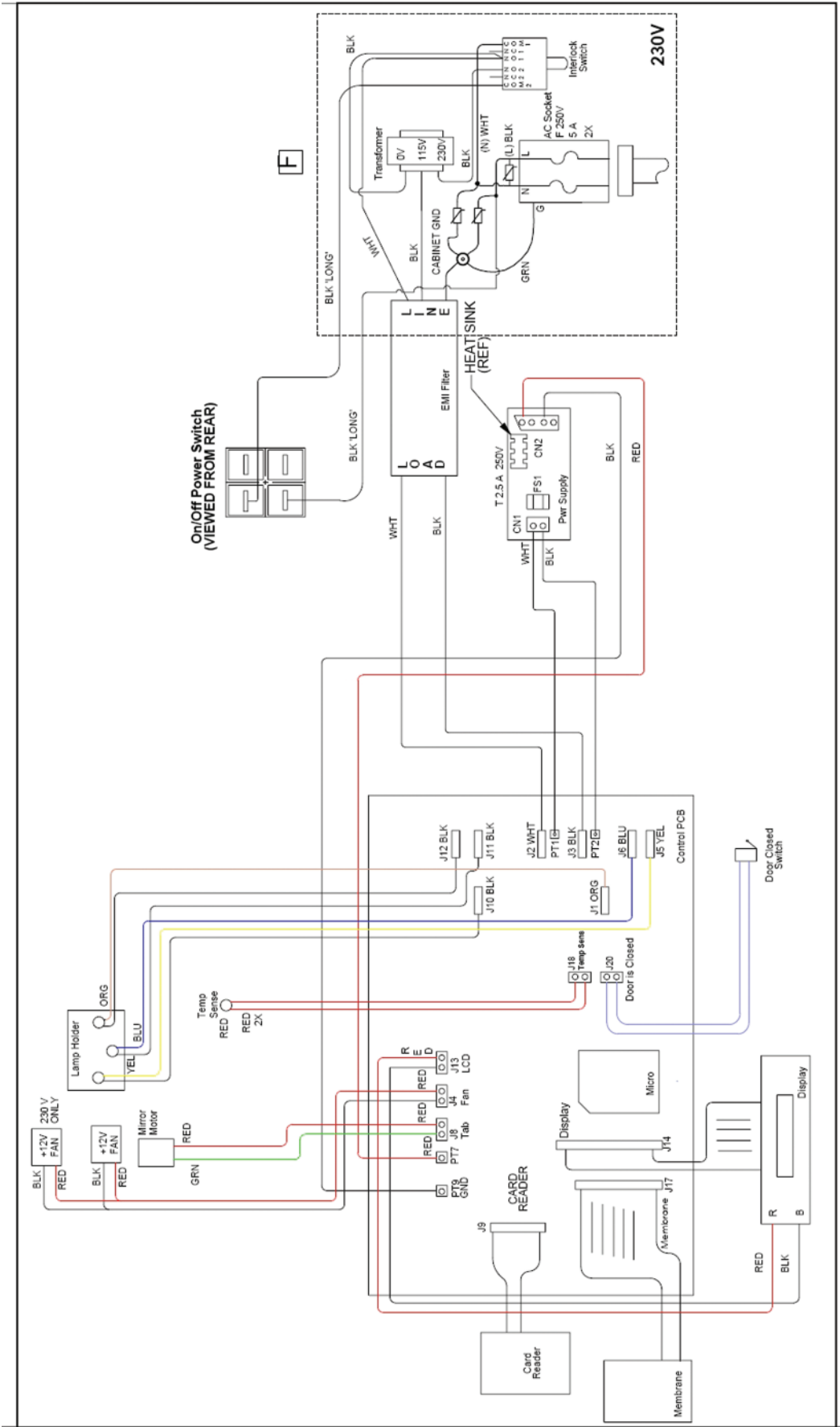
# MICROPROCESSOR



# WIRING DIAGRAM 120V



# WIRING DIAGRAM 230V



## **WIRING HOOKUP**

### **CONTROL PCB:**

- \* Black/White AC Power-Cable wire from Control PCB to CN1 on Power Board.
- \* Red/Black DC Power-Cable wire from Control PCB to CN2 on Power Board.
- \* Orange wire from left bulb assembly to J1 on Control PCB.
- \* Blue wire from center bulb assembly to J6 on Control PCB.
- \* Yellow wire from right bulb assembly to J5 on Control PCB.
- \* Black wires from bulb assemblies to J10, J11 and J12.

### **MEMBRANE SWITCH:**

- \* Membrane Switch connector to J17 on Control PCB.

### **CARD READER PCB:**

- \* Card reader connector to J9 on Control PCB

### **WIRING HARNESS:**

- \* Purple wire to J20 on Control PCB. (Door switch)
- \* Red/Black Wire Jack to J4 on Control PCB. (Fan)
- \* Green/Red Wire Jack to J8 on Control PCB. (Table Motor)
- \* Red/Red Wire to J18 on Control PCB. (Temp Sense)

### **DISPLAY PCB:**

- \* Display Board data connector to J14 on Control PCB.
- \* Display Board Power connection cable (Black/Red) to J13 on Control Board.

### **POWER 120V:**

- \* Power cord black long wire to pin 4 on the power switch; from pin 5 to COM2 of interlock switch.
- \* Black wire from NO2 on interlock switch to EMI filter, bottom of line input.
- \* Power cord white wire to COM1 of interlock switch
- \* White wire from NO1 on interlock switch to EMI filter, top of line input.

### **POWER 230V:**

- \* Power cord black long wire to pin 4 on the power switch; from pin 5 to COM2 of interlock switch.
- \* Loosely connect MOV to line piggy
- \* Black wire from 230V input of transformer to NO2 on interlock switch.
- \* Power cord white wire to COM1 of interlock switch
- \* Loosely connect MOV to neutral piggy.
- \* White wire from NO1 of interlock switch to EMI filter, top of line input.
- \* Black wire from 0V input of transformer to piggy on NO1 of interlock switch.
- \* Black wire from 115V of transformer to EMI filter bottom of line input.

### **GROUND: (SEPARATE EACH WIRE WITH A NUT)**

- \* Power cord ground on bottom – tight and by itself.
- \* One ground wire to base stud and secure with nut, plug opposite LINE side of EMI filter.

## **PRODUCT SERVICE:**

### **Three methods of product service are available:**

- Telephone assistance available at the number listed below.
- Return the unit for servicing using the instructions below.

### **BEFORE RETURNING THE UNIT:**

- Call DENTSPLY for a PR (Product Return) number. This is used to track and identify your unit. Equipment received without this number may not be identifiable.
- If you do not have the original packaging, please request replacement packaging to ensure the unit is not damaged in shipment.
- Secure top section in down position using original rubber bands supplied with the original packaging.
- Equipment damaged in shipment as a result of improper packing may not be paid by the carrier.

DENTSPLY will not be responsible for damages resulting from improper packing.

Ship prepaid to:

DENTSPLY Ceramco

ATTN: Equipment Repair

PR Number \_\_\_\_\_

470 West College Ave.

York, PA 17401 USA

Phone: 800.835.6639 Option #1 (US Customers)

717.849.4502 (International Customers)

Fax: 717-849-4238

Email: YorkPa-Prosthetics-Equipment-Repair@dentsply.com

**DENTSPLY**

**CERAMCO®**



Manufactured By:  
**DENTSPLY International Inc.**  
DENTSPLY Ceramco  
570 West College Ave.  
York, PA 17401  
1-800-243-1942  
[prosthetics.dentsply.com](http://prosthetics.dentsply.com)

Distributed by:  
DENTSPLY Canada  
161 Vinyl Court  
Woodbridge, Ontario  
L4L 4A3  
905-968-5374

Printed in U.S.A.  
9363191 Rev. 6 07/13