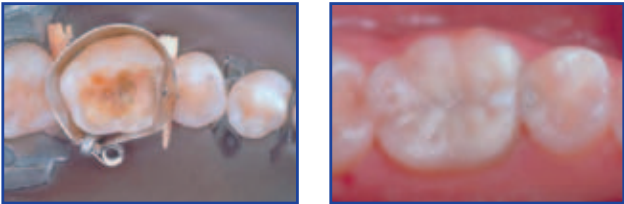


# AutoMatrix®

Retainerless Matrix System

Ideal for larger preparations and those that have buccal or lingual extensions.



**Retainerless System**

- Clear field of vision, access for quadrant work, better patient comfort

**Conical formation**

- Better anatomical adaptation helping to avoid restorative overhang

**Torque control of AutoMate® III tightening device**

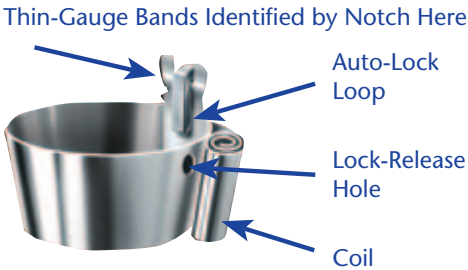
- Limits over-tensioning, less adjustment needed

**Pre-loaded bands**

- Save time, less steps

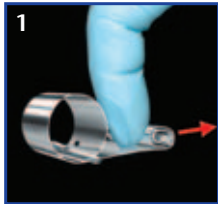
Four different matrix bands are available for all situations:

Type	Narrow/ Regular (NR)	Medium/ Thin (MT)	Medium/ Regular (MR)	Wide/ Regular (WR)
Height (mm)	4.76	6.35	6.35	7.94
Thickness (mm)	0.05	0.038	0.05	0.05
Clinical uses	short bicuspid & molars	bicuspid/ molars	bicuspid/ molars	long molars



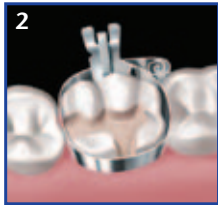
**Step by Step**

To properly fit tooth, matrix should be slightly larger than occlusal circumference.



**Preparation**

Unroll coil slightly with finger. Slide the auto-lock against the coil.



**Placement**

Position it with the auto-lock loop at the center of the buccal or lingual... or the remaining section of standing tooth.



**Tightening**

Insert Automate III tip into coil and rotate knurled handle clockwise. After 2 to 3 clicks, stop.



**Tooth Restoration**

Place anatomical wedges as desired. Burnish contact areas as needed. Restore tooth.



**Release and Removal**

Rotate winding tip of Automate III counterclockwise (1/4 turn). To open the matrix, clip projecting end of Auto-Lock loop.

**ORDERING INFORMATION**

	For EU	For US
<b>AutoMatrix® Introductory Package</b> 96 Bands (24 of each size) 1 Automate® III Tightening Device, Snippers	624.22.501	663032
<b>AutoMatrix® Refills</b> (72 pieces each) NR: Narrow-Regular MT: Medium-Thin MR: Medium-Regular WR: Wide-Regular	624.22.511 624.22.510 624.22.512 624.22.513	663002 663001 663003 663004
<b>AutoMatrix® Accessories</b> Snippers Automate® III Tightening Device Extra Shaft Assembly Repair Set for Snippers/ Snipper Shield Assembly Package	624.22.601 624.22.602 624.22.603 963010	663006 663100 663016 663007

DENTSPLY Caulk  
38 West Clarke Avenue  
Milford, DE 19963  
USA  
www.dentsply.com  
www.caulk.com

DENTSPLY DeTREY GmbH  
De-Trey-Str. 1  
78467 Konstanz  
Germany  
www.dentsply.de



For better dentistry

**DENTSPLY**