

**STRONGER.
SIMPLER.
EASIER.**

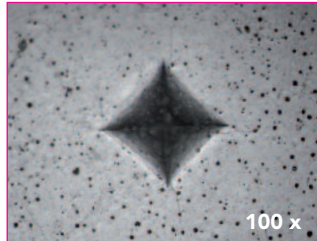
ChemFil® 
Advanced Glass Ionomer Restorative

CHEMFIL® ROCK IS STRONGER.

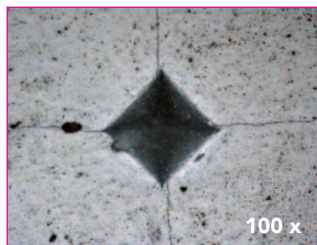
It offers superior fracture and wear resistance and up to 25% higher strength compared to other leading brands. Use ChemFil® Rock restorative with confidence, knowing that you're giving your patients the strongest, most durable glass ionomer restoration possible.

CRACKING BY INDENTATION

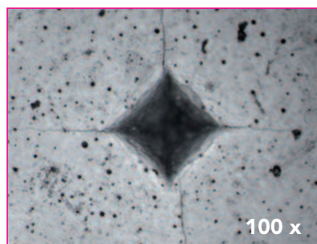
29.4 N load for 30 sec (after 3h)



ChemFil® Rock



Ketac Molar

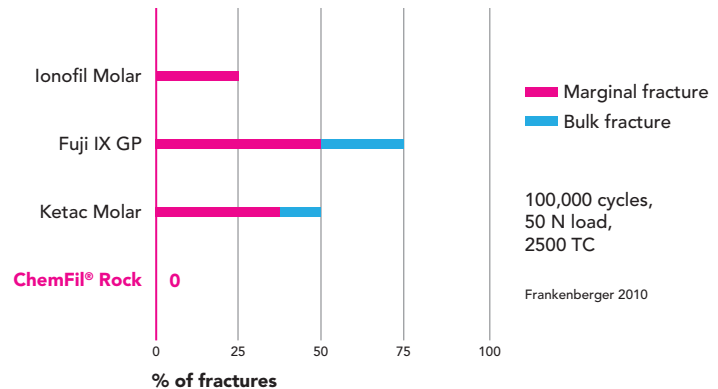


Fuji IX GP

ChemFil® Rock restorative shows "superior fracture and wear resistance in posterior restorations when simulated clinical conditions are applied."

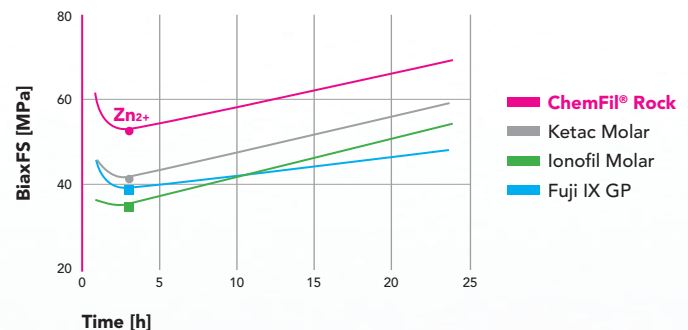
Prof. Dr. R. Frankenberger, University of Marburg

CHEWING SIMULATION – TOTAL FRACTURE RATE

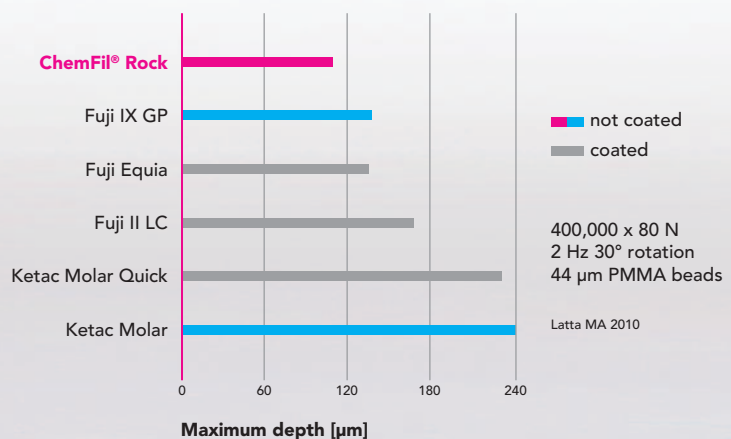


FLEXURAL STRENGTH OVER TIME

Enhanced ion release improves material properties at early curing time.



LOCALIZED WEAR – LEINFELDER WEAR SIMULATOR



**THE FUNNY THINGS YOUR PATIENTS DO:
THEIR CHOICE.**

**USING CHEMFIL® ROCK, THE SIGNIFICANTLY
STRONGER GI RESTORATIVE: YOUR CHOICE.**






Dentists reach for glass ionomer restoratives more and more because of GI's superior performance in pediatric, geriatric, emergency and many other cases. DENTSPLY Caulk has just made a good thing a lot better. ChemFil® Rock restorative's unique formulation is the first to contain zinc-reinforced glass ionomers. The result is earlier toughness buildup and resistance to fractures.

Research proves it.

Add in simpler use and easier handling, and it's clear: now you don't have to worry so much about the funny things your patients do.

CHEMFIL® ROCK IS SIMPLER TO USE.

No cavity conditioning or surface coat needed. The restoration procedure is fast, with bulk placement via advanced capsule extruder and self-cure setting. This is a significant advantage in emergency cases or cases involving difficult patients.

STEPS*	CHEMFIL ROCK	FUJI IX	FUJI IX GP	FUJI IX GP EXTRA	FUJI II LC
CAVITY CONDITIONER		✓	✓	✓	✓
AIR DRY		✓	✓	✓	✓
RINSE		✓	✓	✓	✓
SHAKE CAPSULE		✓	✓	✓	✓
ACTIVATE CAPSULE	✓	✓	✓	✓	✓
PRIME CAPSULE		✓	✓	✓	✓
MIX IN AMALGAMATOR	✓	✓	✓	✓	✓
PLACE IN BULK	✓	✓	✓	✓	
PLACE INCREMENT					✓
LIGHT CURE					✓
PLACE INCREMENT					✓
LIGHT CURE					✓
FINISHING	✓	✓	✓	✓	✓
FINISH VARNISH		✓	✓	✓	✓
LIGHT CURE		✓	✓	✓	✓
ESTIMATED TOTAL PROCEDURE TIME	7:05	9:55	7:05	6:35	8:00
ADDITIONAL MATERIALS/ DEVICES NEEDED					

- No conditioning or coating
- No light-curing

* Clinical steps according to manufacturer's directions for use and assumes a standard 4mm deep Class I restoration.



CHEMFIL® ROCK HAS EASIER HANDLING.

It delivers an optimized non-sticky, packable formula and sculptable consistency. Add in fluoride release and good radiopacity, and you have a restoration that requires less time and pleases both you and your patient. Expect more from ChemFil® Rock Advanced Glass Ionomer Restorative.

SIMPLE PROCEDURE: PACKABLE, NON STICKY



ChemFil® Rock



Fuji IX GP

CHEMFIL ROCK CLINICAL INDICATIONS

- Semi-permanent restorations of Class I and II cavities in posterior teeth
- Restoration of deciduous teeth
- Restoration of Class V lesions and cavities
- Restoration of Class III cavities
- Base/core build-up

CLINICAL CASE



Dr. Uwe Pompl, Germany



CHEMFIL ROCK: EXCELLENT INTERNAL ADAPTATION TO CAVITY WALL



STRONGER. SIMPLER. EASIER.

ChemFil® 
Advanced Glass Ionomer Restorative



CHEMFIL® ROCK IS STRONGER.

With superior fracture and wear resistance and up to 25 percent higher strength, you can be confident you're giving your patients the most durable restoration possible.

CHEMFIL® ROCK IS SIMPLER.

Bulk placement with no cavity conditioner or surface coat needed. The result: a faster, simpler technique.

CHEMFIL® ROCK IS EASIER.

Non-sticky, packable handling provides easier placement and excellent marginal adaptation.

Choose ChemFil® Rock Restorative
and stop worrying about the things your patients do to their teeth.

ORDERING INFORMATION

606.06.590	Introductory Kit 40 ChemFil® Rock Capsules (1 cap contains 442mg powder and 0.12mL liquid) 10 Capsules each shade: A1, A2, A3, Contrast White 1 Capsule Extruder 2
	Refill Package 50 ChemFil® Rock Capsules (1 cap contains 442mg powder and 0.12mL liquid)
606.06.591	Shade A1
606.06.592	Shade A2
606.06.593	Shade A3
606.06.594	Shade A4-O
606.06.595	Shade Contrast White
	Mini Refill Package 20 ChemFil® Rock Capsules (1 cap contains 442mg powder and 0.12mL liquid)
606.06.599	Shade A2
606.06.597	Shade A3
606.06.596	Capsule Extruder 2 (1/box)

DENTSPLY
CAULK

38 West Clarke Avenue, Milford, DE 19963 • 1-800-LD-CAULK (532-2855) • www.dentsply.com • www.ChemFilRock.com

Fuji IX, Fuji IX GP, Fuji IX GP Extra, Fuji Equia, Fuji II LC, Ketac Molar, Ketac Molar Quick and Ionofil Molar are not registered trademarks of DENTSPLY International. Data on file. ©2012 DENTSPLY International. All rights reserved. Form #51J900 (R 9/27/12)