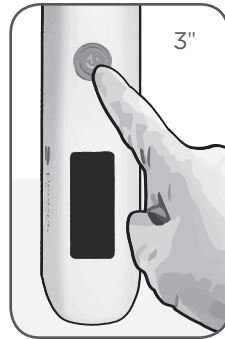
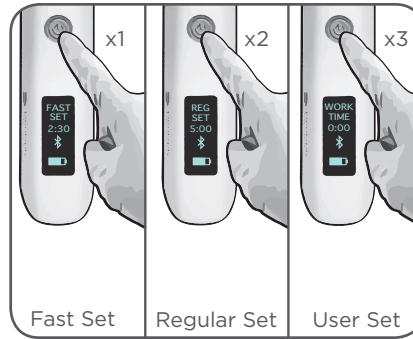


digit Power® Dispenser

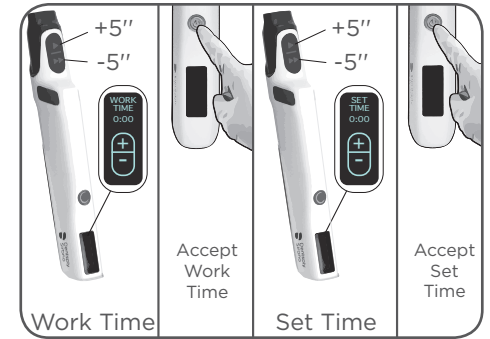
Technique Guide



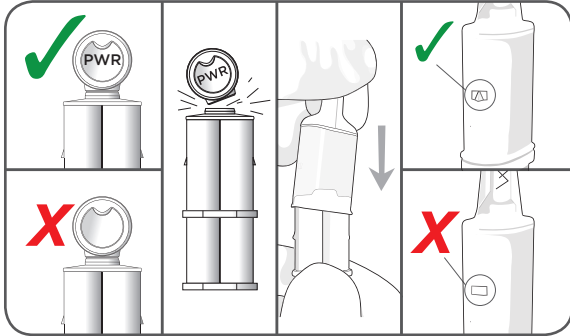
Step 1: Power on/off



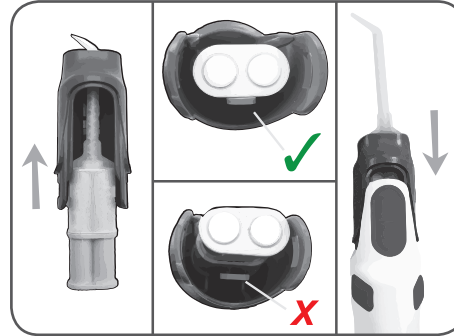
Step 2a: Select pre-set timer



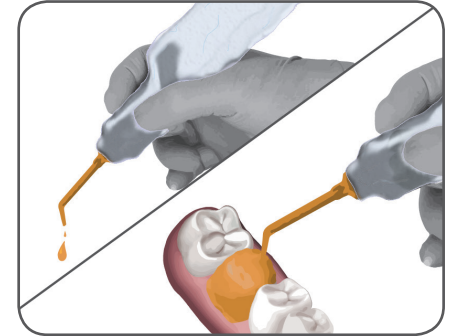
Step 2b: When selected, set "User Set" if desired



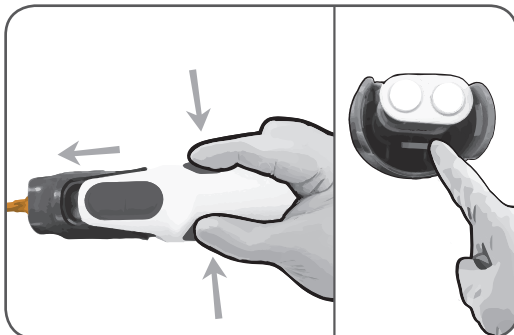
Step 3: Assemble digit Power® Cartridge



Step 4: Assemble cartridge cap



Step 5: Place disposable barrier on handpiece, bleed cartridge, then dispense material



Step 6: Disassemble and process according to Directions for Use

ADDITIONAL INFORMATION

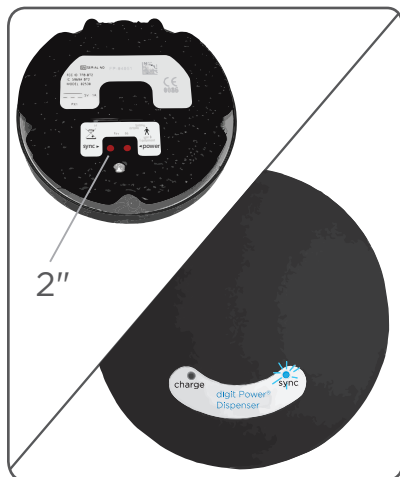
Fast Set*	Work Time: 0'35"	Set Time: 2'30"
Regular Set*	Work Time: 1'10"	Set Time: 5'00"
User Set	Work Time & Set Time: Programmable	
	Slow Dispensing	
	Fast Dispensing	

*Pre-Set Timers correspond to Work and Set times for Aquasil® Ultra+ Smart Wetting® Impression Material

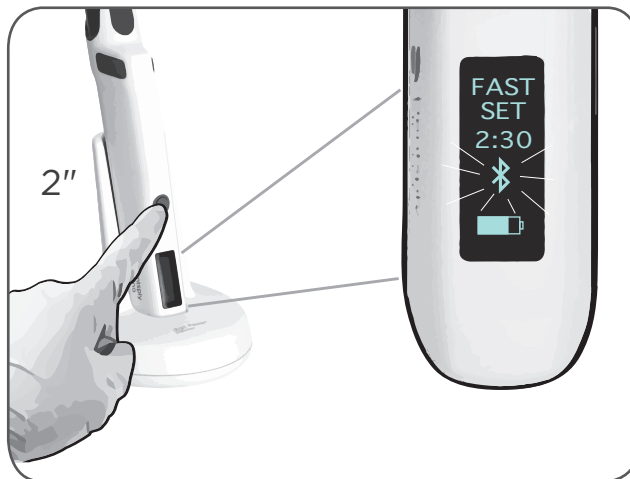
BATTERY STATUS

Indicator Light	Degree of Charge
	80-100%
	60-79%
	40-59%
	20-39%

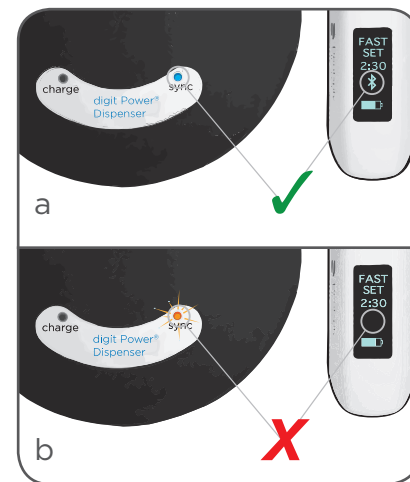
Optional Foot Control Pairing Guide



Step 1: Press sync button on underside of foot control to initiate foot control pairing.



Step 2: Quickly press power button on handpiece while in charging base to initiate handpiece pairing.



- Blue sync light on foot control and solid bluetooth icon indicates successful pairing
- Blinking orange light on foot control and no visible bluetooth icon indicates failed pairing

For more information about this and other Dentsply Sirona products, visit www.DentsplySirona.com



For Dental Use Only



Caution, consult instructions for use



www.dentsplysirona.com
www.dentsply.eu/ifu

Dentsply Sirona
38 West Clarke Avenue
Milford, DE 19963 USA
1-302-422-4511
www.dentsplysirona.com