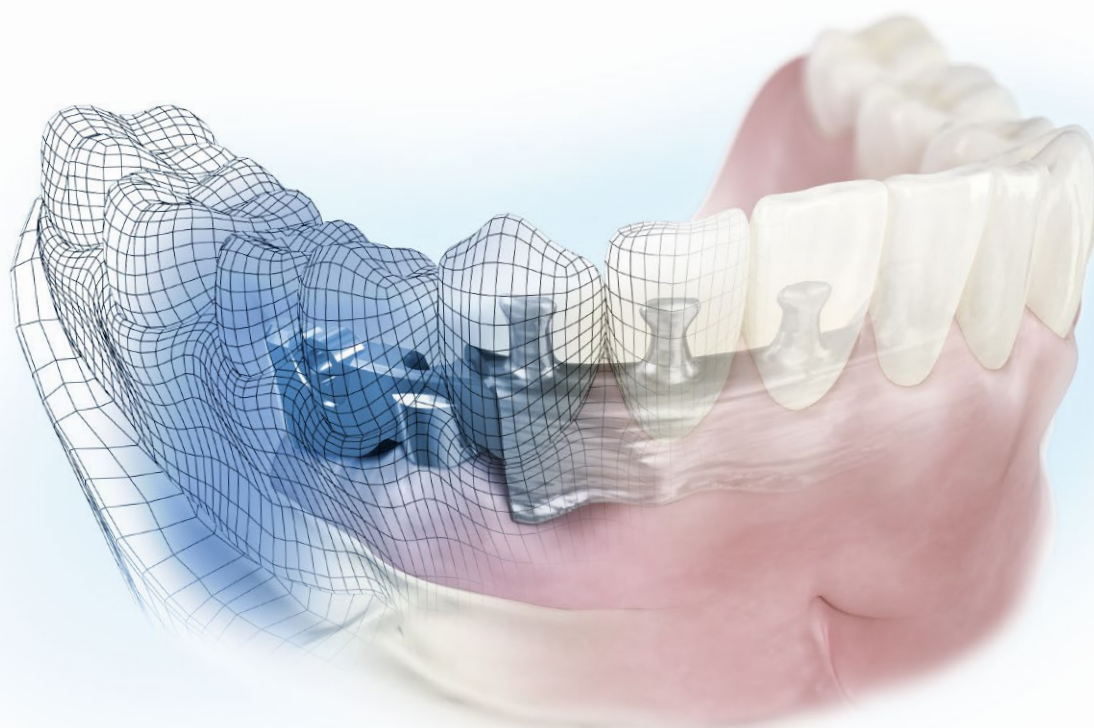


ATLANTIS™

For all major
implant systems

ATLANTIS™ ISUS patient-specific suprastructures Beyond CAD/CAM



DENTSPLY
IMPLANTS

Clinical benefits meet patient satisfaction

As a part of the digital solutions offering from DENTSPLY Implants, ATLANTIS ISUS includes a full range of implant suprastructures for all major implant systems, providing an excellent foundation for optimal function and esthetics.

Incorporating ATLANTIS into the dental practice and dental laboratory provides peace of mind for both clinicians and dental technicians while allowing for increased efficiency and profitability.



Surgical flexibility

ATLANTIS ISUS is available for all major implant systems, and with 290 compatible implant and abutment connections, you can restore your preferred implant system(s) with ATLANTIS ISUS.



Restorative freedom

Whether bars, bridges or hybrids, ATLANTIS ISUS includes the solutions you need for restoring partially and fully edentulous arches and for meeting patient requirements and preferences for function and esthetics.



>500,000

ATLANTIS ISUS implant connections
produced and sold globally

2005

ATLANTIS ISUS is introduced
and the first implant
suprastructures are delivered

TITANIUM



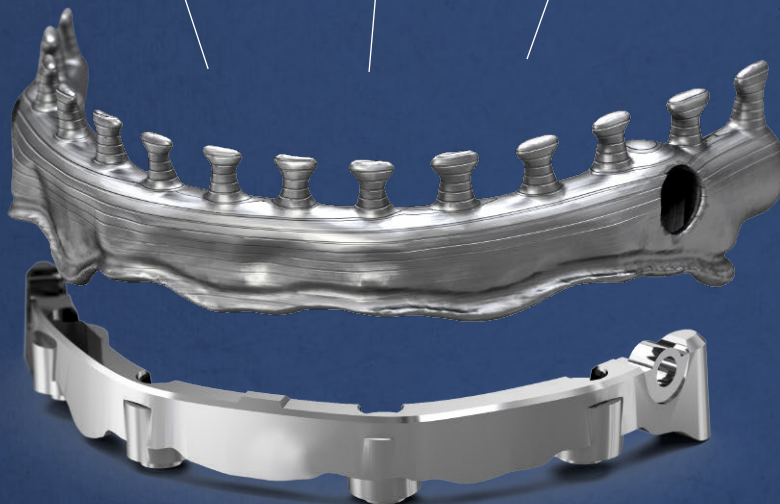
10 YEARS

COBALT-CHROME



10 YEARS

Comprehensive warranty program*



290

Number of compatible implant
and abutment connections



On-time or early shipping

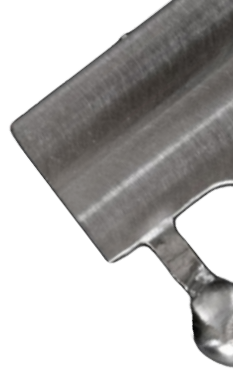
99%

5 min



Time it can take to enter and process an order
for an ATLANTIS ISUS implant suprastructure in
ATLANTIS WebOrder

**Subject to the terms and conditions of the ATLANTIS ISUS warranty.*



Engineered for high precision

ATLANTIS ISUS implant suprastructures are produced using the latest developments in world-class production technologies, and supported by computer-based industrial and medical-device expertise.

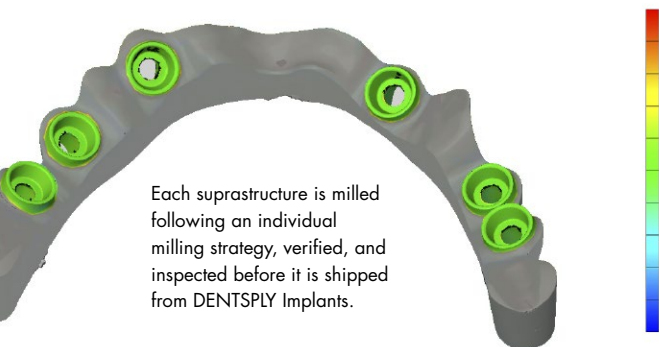
The art and craft of dental laboratory procedures are further enhanced through the application of engineering principles, allowing for the design and production of consistent, high-quality, patient-specific implant suprastructures for all major implant systems.

Unlike casted suprastructures, ATLANTIS ISUS implant suprastructures are milled from solid blocks of titanium or cobalt-chrome, eliminating the potential for a porous material.

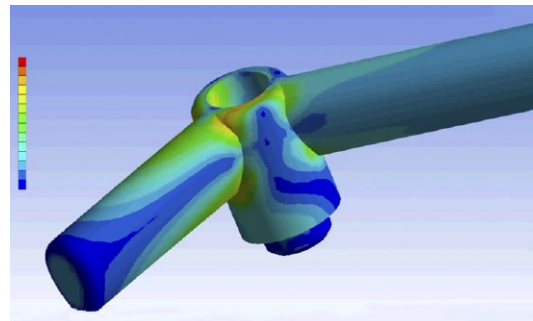
The milling strategies for ATLANTIS ISUS implant suprastructures have been optimized to produce a precise and passive fit.

The precise and passive fit of the ATLANTIS ISUS suprastructures has also been demonstrated by the University of Sheffield, UK, in accordance with the Sheffield Fit Test*.

An analytic approach (e.g. finite element analysis) is utilized to ensure products with optimal strength and function.



Each suprastructure is milled following an individual milling strategy, verified, and inspected before it is shipped from DENTSPLY Implants.



Finite element analysis (FEA) reveals the stressed areas in a design.

**White GE. The Sheffield Fit Test. Osseointegrated Dental Technology 1993:61. Quintessence Publishing Co Ltd, London.*



State-of-the-art production

Every ATLANTIS ISUS implant suprastructure is produced using optimized and individually specified milling strategies.

REFERENCES published in peer-reviewed journals, supporting ATLANTIS™ ISUS:

Barbier L, Abeloos J, De Clercq C, Jacobs R. Peri-implant bone changes following tooth extraction, immediate placement and loading of implants in the edentulous maxilla. Clin Oral Investig 2012;16(4):1061-70.

Cash J, Andrus R. Implant suprastructures for the completely edentulous. Journal of Dental Technology 2011;May:26-30.

Kurtzman GM. The search for accuracy, durability and precision. Journal of Dental Technology 2010;February:9-12.

Tahmaseb A, De Clerck R, Wismeijer D. Computer-guided implant placement: 3D planning software, fixed intraoral reference points, and CAD/CAM technology. A case report. Int J Oral Maxillofac Implants 2009;24(3):541-6.

Tahmaseb A, van de Weijden JJ, Merckel P, De Clerck R, Wismeijer D. Parameters of passive fit using a new technique to mill implant-supported suprastructures: an in vitro study of a novel three-dimensional force measurement-misfit method. Int J Oral Maxillofac Implants 2010;25(2):247-57.

Suprastructures for optimal results

Designed from a diagnostic tooth set-up, ATLANTIS ISUS suprastructures can be attached on implant and/or abutment level.*

Suprastructures are available in titanium or cobalt-chrome,** and can be ordered with a high-gloss surface for optimal soft tissue management.

Removable prostheses

ATLANTIS™ ISUS 2in1 **

ATLANTIS ISUS 2in1 provides primary and secondary suprastructures for a removable solution. The primary is fixed to implants, while the secondary attaches to the primary using friction and additional retention elements. The secondary is a bridge or hybrid suprastructure finished with custom teeth and denture resin. ATLANTIS ISUS 2in1 solution combines screw-retained stability with removable prosthetic convenience.

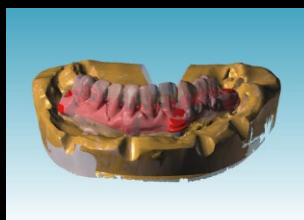
**ATLANTIS ISUS on ASTRA TECH Implant System is recommended on abutment level and available for ANKYLOS on abutment level only.*

Naturally, the implant suprastructures that offers the greatest freedom for all major implant systems is also offering a wide range of attachments preparations for removable implant prostheses.

ATLANTIS™ ISUS Bar

ATLANTIS ISUS Bar is indicated for removable dentures. Bars can be designed following the gingival profile and with extensions. ATLANTIS ISUS Bar can include a combination of various attachment options. ATLANTIS ISUS Bar is available in both standard and custom shaped bars, depending on case requirements.

***ATLANTIS ISUS 2in1 is only available in titanium.*



CAD design of the suprastructure in ATLANTIS ISUS Viewer, for approval prior to milling.



Primary structure of an ATLANTIS ISUS 2in1 is designed as a bar to be fixed to implants.

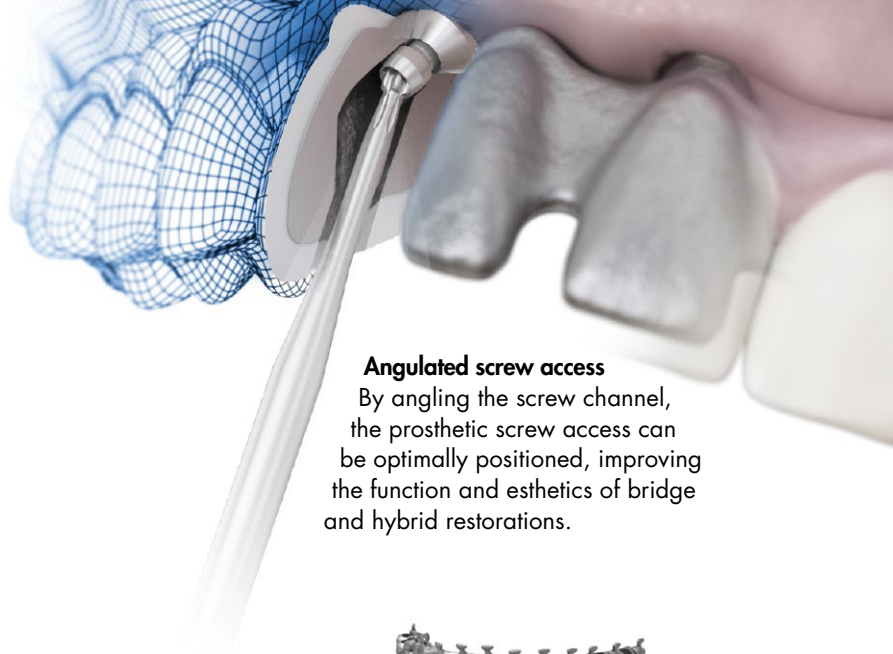


Secondary structure of an ATLANTIS ISUS 2in1 is designed to be attached to the primary using friction fit.



Secondary structure of an ATLANTIS ISUS 2in1 designed as a hybrid, finished with prefabricated teeth and denture resin.

**For all major
implant systems**



Angulated screw access

By angling the screw channel, the prosthetic screw access can be optimally positioned, improving the function and esthetics of bridge and hybrid restorations.

Fixed prostheses



ATLANTIS™ ISUS Bridge

ATLANTIS ISUS Bridge is indicated for fixed prostheses with wide flexibility in therapy and design for partially and fully edentulous patients.

By angling the screw channel, the prosthetic screw access can be optimally positioned, thereby improving the function and esthetics of the restoration.

ATLANTIS ISUS Bridge provides a full-anatomical base for ceramic or composite layering techniques.



ATLANTIS™ ISUS Hybrid

ATLANTIS ISUS Hybrid is indicated for fixed prostheses with wide flexibility in therapy and design for partially- and fully-edentulous patients. By angling the screw channel, the prosthetic screw access can be optimally positioned, thereby improving the function and esthetics of the restoration.

ATLANTIS ISUS Hybrid provides a full-anatomical base with an optimized surface and retention elements to be completed with custom teeth and denture resin.



ATLANTIS ISUS Hybrid provides a surface with retention elements that can be finished with prefabricated teeth and denture resin.



ATLANTIS ISUS Bridge provides a full anatomical base for ceramic layering technique. Designed with angulated screw access for optimal esthetic results.



Optimal position of the screw channel for improved function and esthetics.



Final restoration with ATLANTIS ISUS Hybrid in the lower jaw for best possible function and ATLANTIS ISUS Bridge in the upper jaw for optimal esthetic results.

ATLANTIS™ is good business

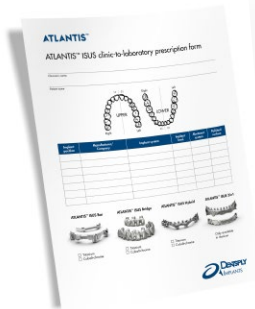
Incorporating ATLANTIS is an easy way to add a new, premium prosthetic dimension to the solution offerings of both dental practices and dental laboratories.

Available for all major implant systems, ATLANTIS supports streamlined and consistent workflows for all implant-supported restorations.

Additionally, ATLANTIS reduces time and costs related to inventory management, maintenance, and chairside

modifications. It brings simplicity and profitability to the dental practice, while freeing up time for additional cases to be created at a dental laboratory.

Best of all, ATLANTIS is an open, fully flexible business model that easily adjusts to dental practice and dental laboratory needs and processes, requiring no investment in software or equipment.



2

The order is entered by the dental technician using ATLANTIS WebOrder. Case models and materials are shipped to DENTSPLY Implants.



3

After review and final approval of the design in ATLANTIS ISUS Viewer, the suprastructure is milled.



4

The ATLANTIS ISUS implant suprastructure is shipped to the dental laboratory, which then produces the final prosthetic solution and sends the complete case back to the clinician.



1

An implant- or abutment-level impression is taken by the clinician and sent to the dental laboratory with a request for an ATLANTIS ISUS implant suprastructure.



Designed for practice success

- Angulated screw access for optimal function and esthetics
- Simple restorative procedure with reduced chairtime
- Comprehensive 10-year warranty*

Developed for laboratory efficiency

- Eliminate the time needed for designing and modifying frameworks—frees up skilled technicians' time for other tasks
- No need for investment in and maintenance of additional equipment and software
- Simplified and efficient online ordering process



**Subject to the terms and conditions of the ATLANTIS ISUS warranty.*



ATLANTIS™ CaseSafe

ATLANTIS CaseSafe ensures efficient processing of your order and safe transport of your case materials.



ATLANTIS™ WebOrder

ATLANTIS orders can be conveniently placed 24 hours a day, 7 days a week via an online ordering system for order entry that is quick and easy.



ATLANTIS™ ISUS design

Implant suprastructures are designed using the latest digital technologies and ISUSsoft.

Let's get connected

DENTSPLY Implants provides digital solutions that make it easier for everyone to connect; streamlining the workflow for all your restorations.

This connectivity is a result of our commitment to delivering consistent, reliable and high quality product and services. It supports the collaboration between DENTSPLY Implants and our customers as well as among the members of the

treatment team and is present throughout the planning and treatment processes. Connectivity also helps guarantee that you receive exactly what you expect, each and every time.



ATLANTIS™ ISUS Viewer

ATLANTIS ISUS implant suprastructures are milled only after review and final approval of the design.



**ATLANTIS™ ISUS
implant suprastructures**
Available for fixed and
removable implant prostheses
are available for all major
implant systems.

We have you covered

For added peace of mind, all ATLANTIS ISUS implant suprastructures are covered by a comprehensive 10-year warranty* and supported by expert customer support.

TITANIUM



10 YEARS

COBALT-CHROME



10 YEARS



For added assurance that you are receiving a genuine ATLANTIS ISUS original implant suprastructure, warranty cards are provided with an order identification number for every case delivered.

**Subject to the terms and conditions of the ATLANTIS ISUS warranty.*

About DENTSPLY Implants

DENTSPLY Implants offers comprehensive solutions for all phases of implant therapy, including ANKYLOS®, ASTRA TECH Implant System™ and XiVE® implant lines, digital technologies, such as ATLANTIS™ patient-specific CAD/CAM solutions and SIMPLANT® guided surgery, SYMBIOS® regenerative solutions, and professional development programs. DENTSPLY Implants creates value for dental professionals and allows for predictable and lasting implant treatment outcomes, resulting in enhanced quality of life for patients.

www.dentsplyimplants.com

About DENTSPLY International

DENTSPLY International Inc. is a leading manufacturer and distributor of dental and other healthcare products. For over 110 years, DENTSPLY's commitment to innovation and professional collaboration has enhanced its portfolio of branded consumables and small equipment. Headquartered in the United States, the Company has global operations with sales in more than 120 countries.

