

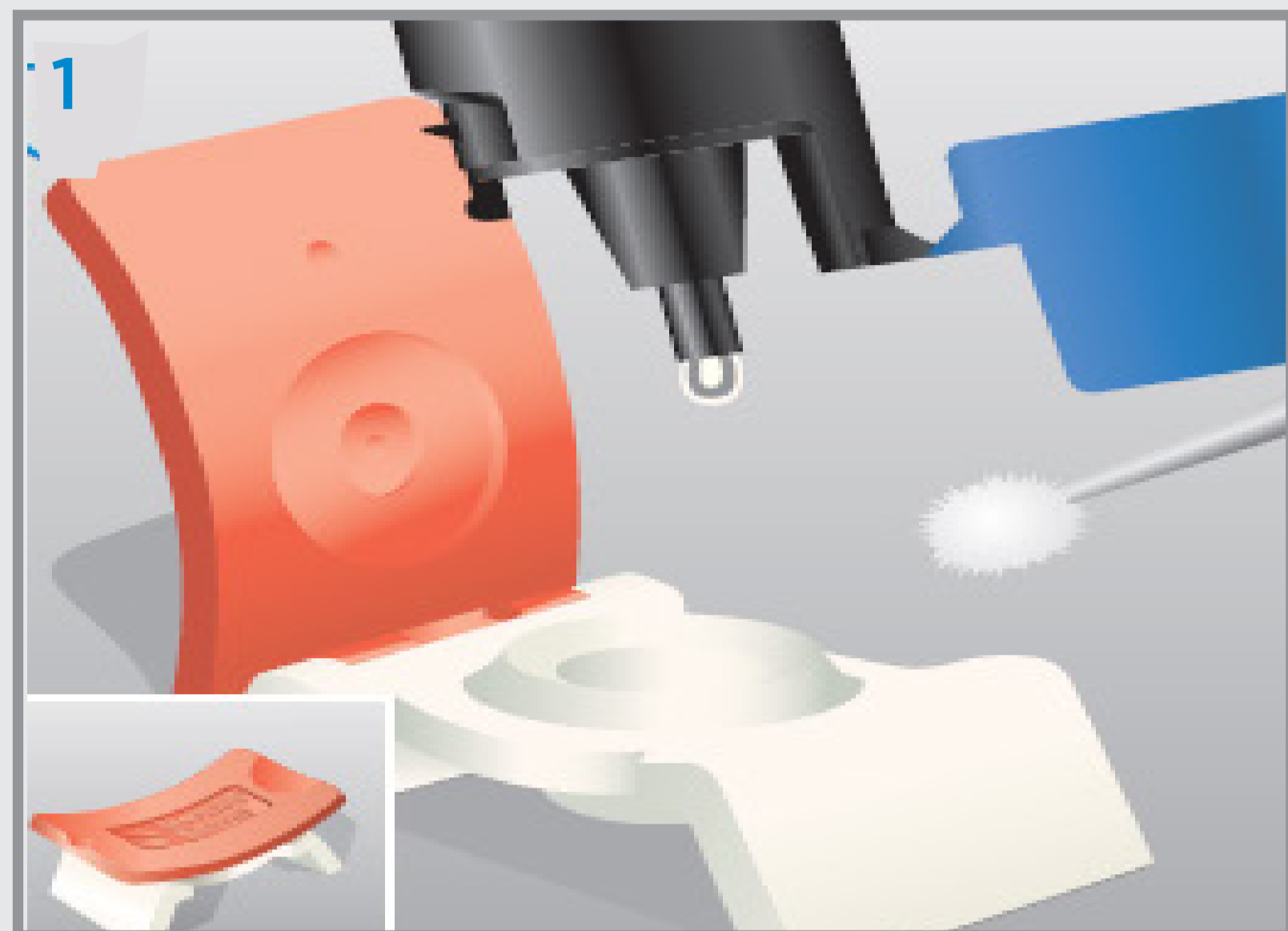
## Procedural Spotlight:

# SureSmile Attachment Bonding

With orthodontic aligner treatment, not every case is as simple as fixing a couple of crooked teeth. For moderate to more complex cases, SureSmile Aligners offer a quick and easy way to work with bonded attachments that can be used throughout any stage of treatment to help you straighten your patient's teeth.

The following workflow explains how to bond attachments at precise locations, allowing you to choose how the SureSmile Aligners "grip the teeth" to help guide them to their new positions.

### Procedural steps\*



#### Pretreatment Steps:

- Confirm you have the correct patient's aligner box and remove the attachment template
- Identify which teeth require attachments
- Dispense Prime&Bond active from bottle into CliXdish and close lid
- Isolate with cheek retractors



**Prophy** (with fluoride-free pumice), **Rinse & Dry**



**Apply Etch**

min.  
15 sec.



**Rinse**

min.  
15 sec.



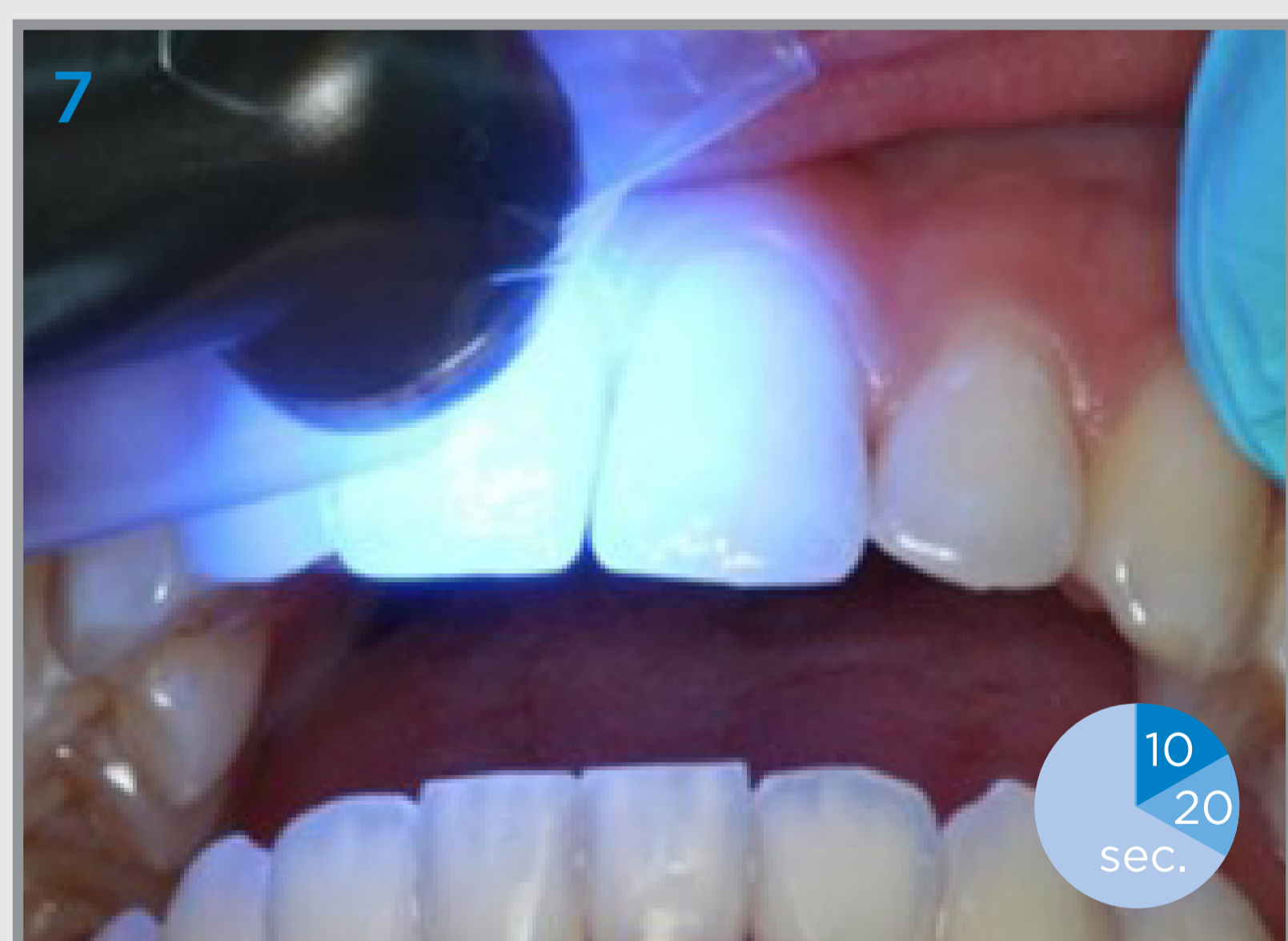
**Air Dry**



**Apply Bond** (slightly agitate)  
**Air Dry** (gently)

Bond  
20 sec.

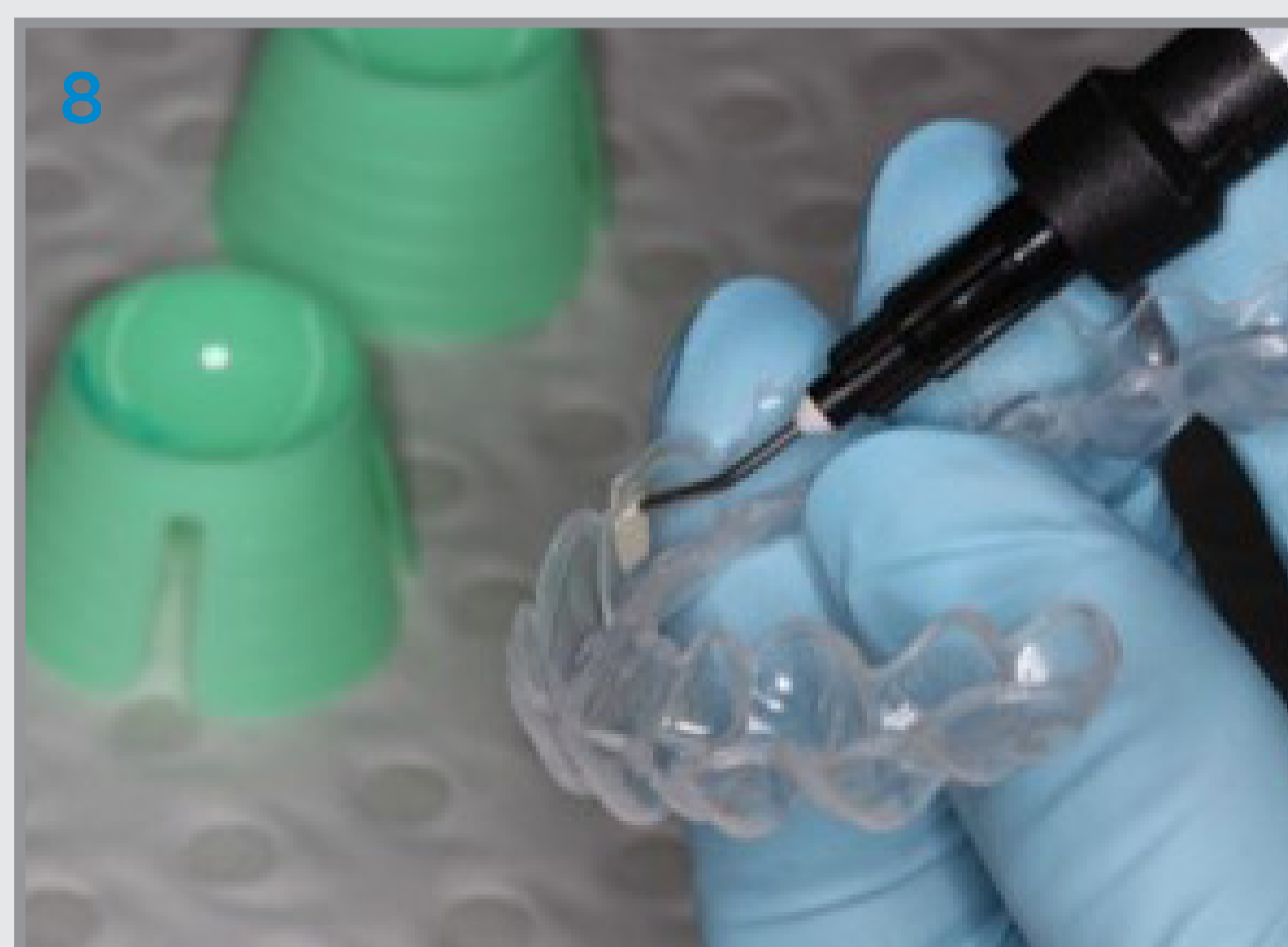
Dry  
min.  
5 sec.



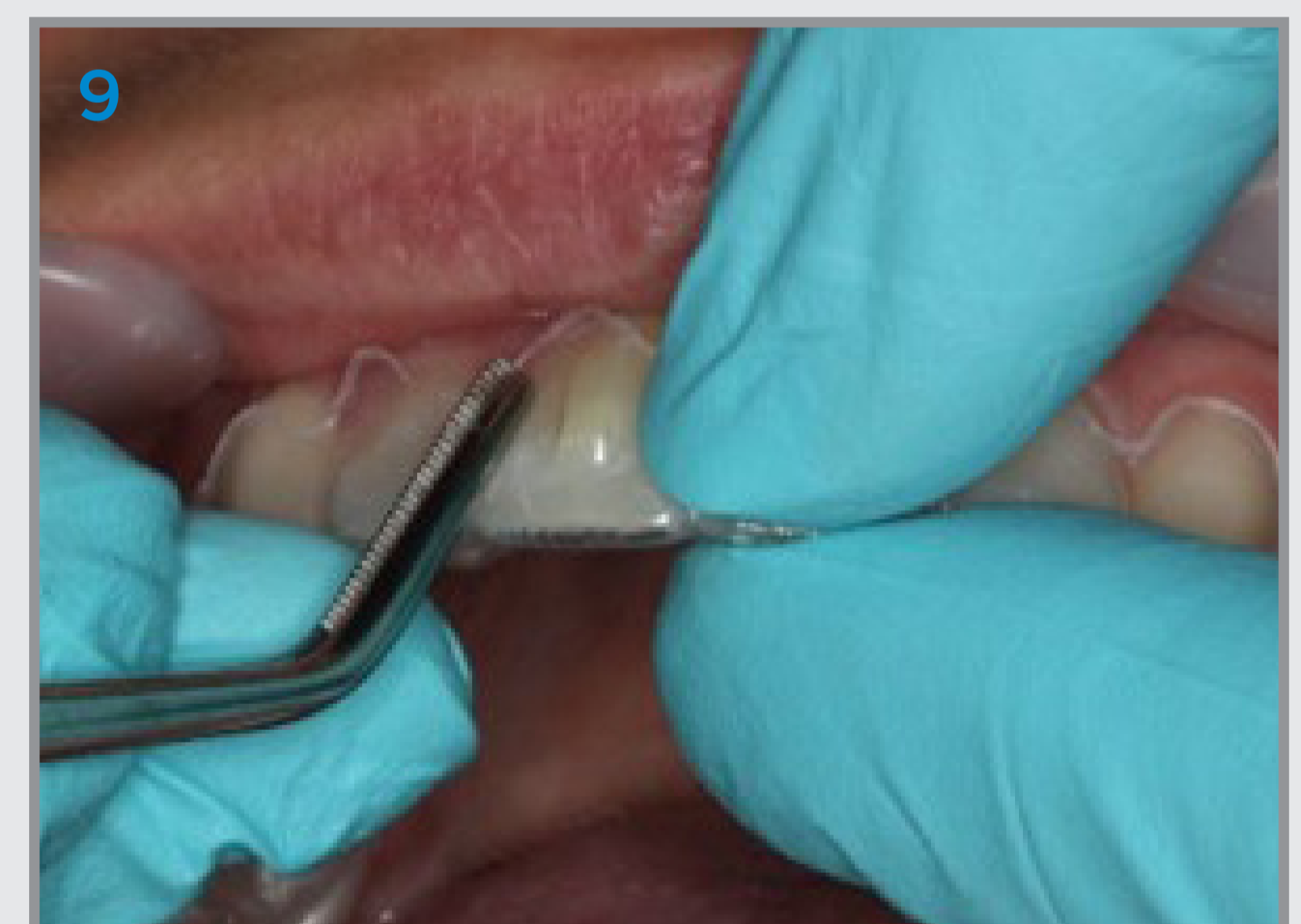
#### Cure Bond\*

- ≥ 500 mW/cm<sup>2</sup> = 20 s
- ≥ 800 mW/cm<sup>2</sup> = 10 s

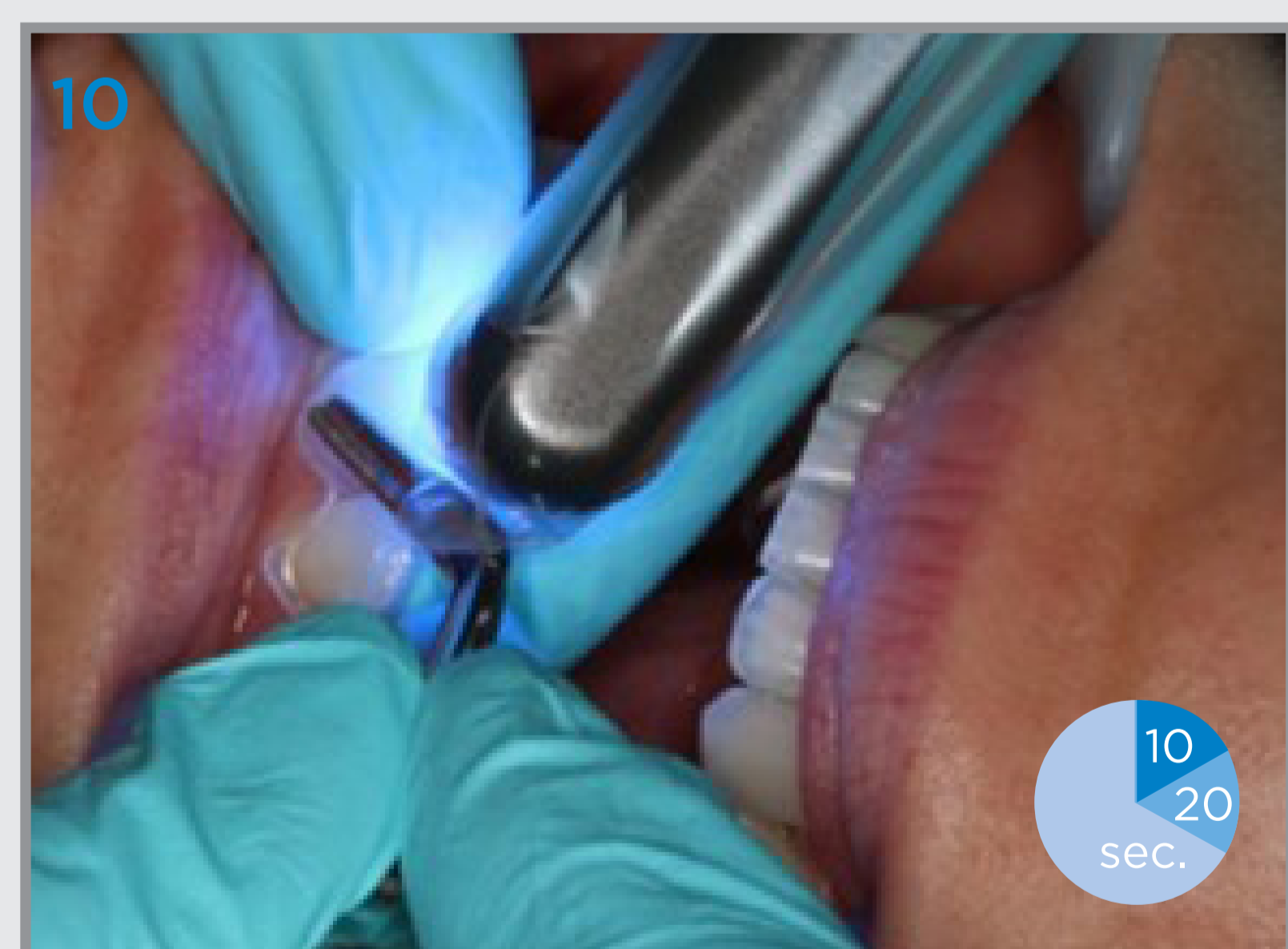
10  
20  
sec.



**Fill** each attachment in the template with flowable composite

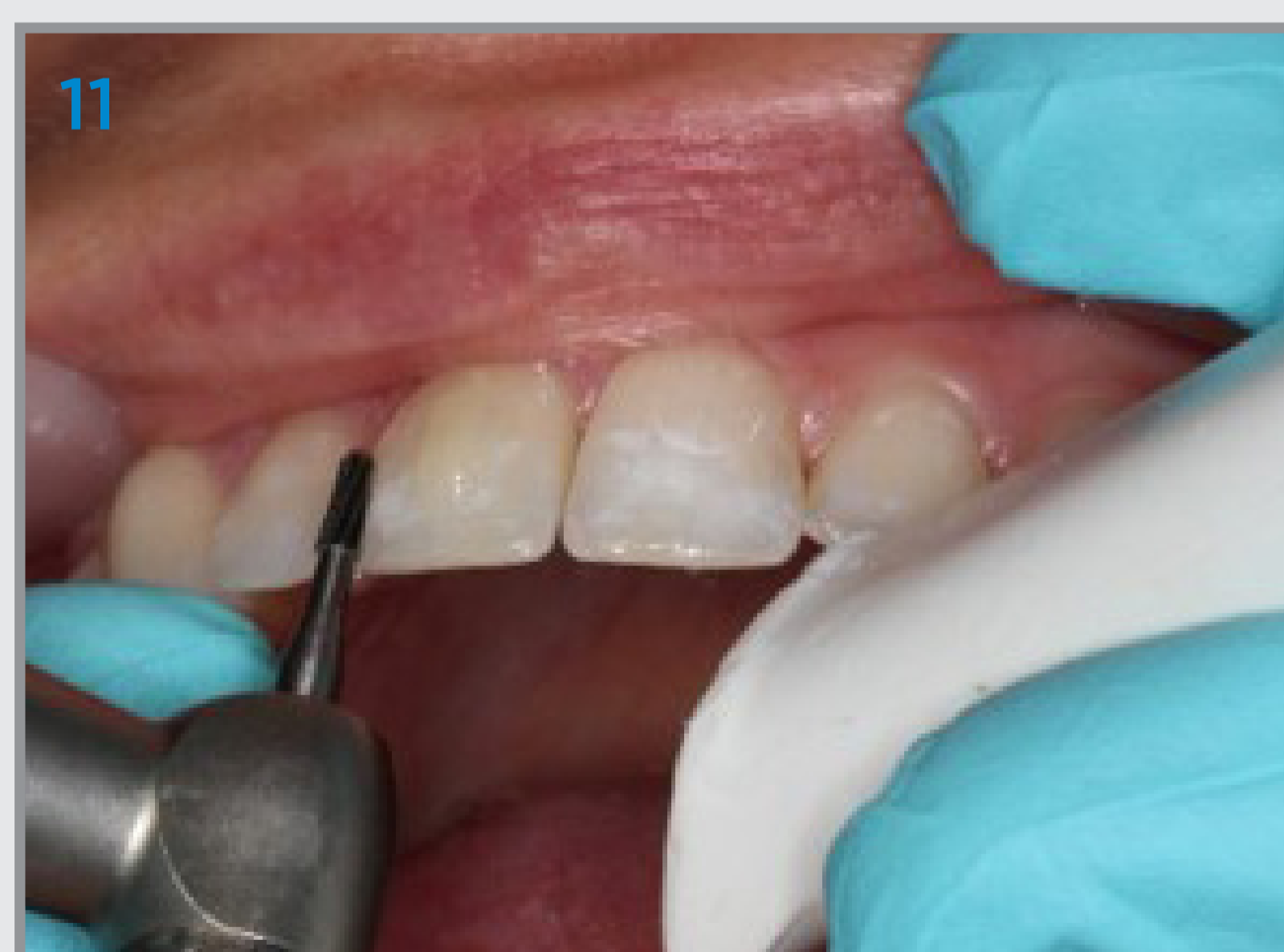


**Place attachment template** on teeth  
Place gentle pressure around attachment to ensure it has good contact with the tooth surface



**Light cure\*** each attachment

10  
20  
sec.



Remove attachment template  
**Remove excess** flash (as needed)



**Patient is ready** to insert their first active aligner!

### Recommended Products

- Caulk 34% Tooth Conditioner Gel (Syringe or Bottle) *Phosphoric Acid Etch*
- Prime&Bond active *Universal Adhesive*
- CliXdish *Dappen Dish*
- SmartLite Pro *Modular LED Curing Light*
- Ceram.x Spectra ST flow\*\* (Syringe or Compula Tips) *Flowable Composite Restorative*

\*Always refer to the manufacturers Directions For Use (DFU's) prior to clinical use.

\*\*Available in shades A1, A2, A3, A3.5, A4, BW (Bleach White), D1, D3 & E1.