



Update-Description

inLab CAD SW 19.0

This document describes changes and improvements compared to previous version inLab CAD SW 18.1

June 2019

General:

Connect Case Center Inbox

The Connect Case Center Inbox is a download tool that gives labs easy access to digital impression data generated with Primescan or Omnicam. Advantages are in particular the automatic bulk download of orders into predefined working folders, a job overview with 3D model preview, as well as the possibility of a connection to a laboratory management software.

To run the Connect Case Center Inbox a valid license is necessary. For inLab users from inLab Software 19.0 the license is included in the basic module and in the update without additional costs. The application can be used independently of an inLab PC on a separate Windows PC.

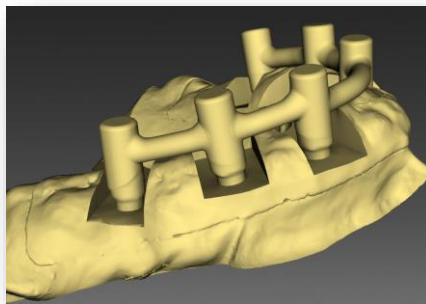
Dentsply Sirona Branding

The new Dentsply Sirona branding has been integrated into the splash screen as well as the watermark of the inLab Software 19.



Virtual Seating optimized

The virtual seating, especially of implant-supported restorations, has been improved. It will now automatically cut out a bounding box. The inLab Model App can create a model out of this virtual data.



Discontinue inEos Blue

From version inLab CAD SW 19.0 on the inEos Blue will not be supported

Installation requirements

Recommended: inLab PC V5.0.1.

At least: inLab PC V3.0.1. (Windows 7)

Part	Recommended requirements
Operating system	Windows 10 (64-Bit)
RAM	16 GB or higher
Video card	AMD Pulse Radeon RX 570 or better
Hard disk	2 TB
Processor	Intel Core i7
Monitor resolution	1920x1080
3D mouse	3Dconnexion SpaceMouse Compact

New indications:

Phase Administration



New Material:

The following additional materials can be selected in this version. Depending on the machine type and country, not all materials are always available:

Dentsply Sirona		
Cercon xt-ML	inCoris NP, NPM, TI, FI	
Cercon base	(infinident)	
Degunorm	inCoris TP (infinident)	
Econolly Au	inCoris WAX (infinident)	
BiOcclus Kiss	inCoris HTZI (infinident)	
DeguDent U		
3M	VITA	Ivoclar Vivadent
Chairside Zirconia	YZ XT Multicolor	IPS e.max ZirCAD Prime

New TiBase:

The following additional TiBase can be selected in this version.

Vendor	System	Diameter
Dentsply Sirona	Astra Tech TX	3.0 / 3.5 / 4.0 / 4.5 / 5.0
Dentsply Sirona	XiVE	3.0 / 3.4 / 3.8 / 4.5 / 5.5

Phase Scan



Interface inEos X5 and exocad® Software

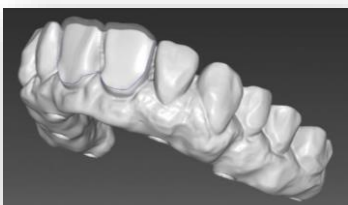
exocad users can benefit for the first time from a validated interface connection to the high-precision extra-oral scanner inEos X5 from Dentsply Sirona. After linking the inLab software with the exocad Dental DB, the case can be created in exocad and the scanning process can be initiated. As soon as the scanning process and the model calculation have been completed in the inLab software, the data is transferred to exocad in the exocad design format ".dentalproject".

Phase Design



Reduce tool for 1:1-copy

Partial reduction is now available as a tool for 1:1-copy restorations. This leads to extended design possibilities and increases the application spectrum of the function.



Apps:

General

From all apps starting with inLab SW 19.0 the new ".appcam" format can be exported. This new format enables an direct import into the inLab CAM SW without having to export to ".stl" first.

Model App

In addition to the model analogs of nt-Trading, new model analogues from ELOS Medtech are now available. The selection is made in the side panel and will be saved for future cases. It increases the flexibility for laboratories in using model analogs.

The base height for models can now also be set separately for upper and lower jaw. In this way, the user can save on material, in particular for implant models, by only increasing the base height in the jaw with model analogs and leaving the base height of the opposing jaw as low as possible.

During the import of Atlantis Corefiles the inLab software will close the gap between the model and the abutment. So models can be designed and manufactured from Atlantis Corefiles now.

A new text labeling tool is available for inLab Model and inLab Splint. The tool will improve writing, adding and repositioning of the text.

Quality improvement and stability

Dentsply Sirona continuously improves the quality of its products. As part of this release, several improvements have been made and known software bugs have been fixed. We always recommend using the latest software version.