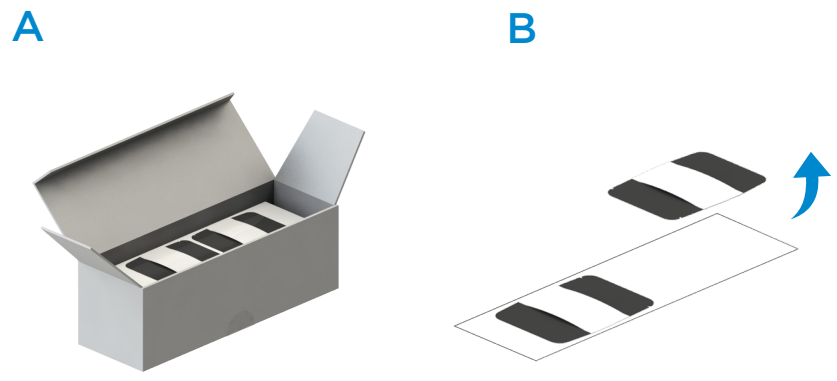
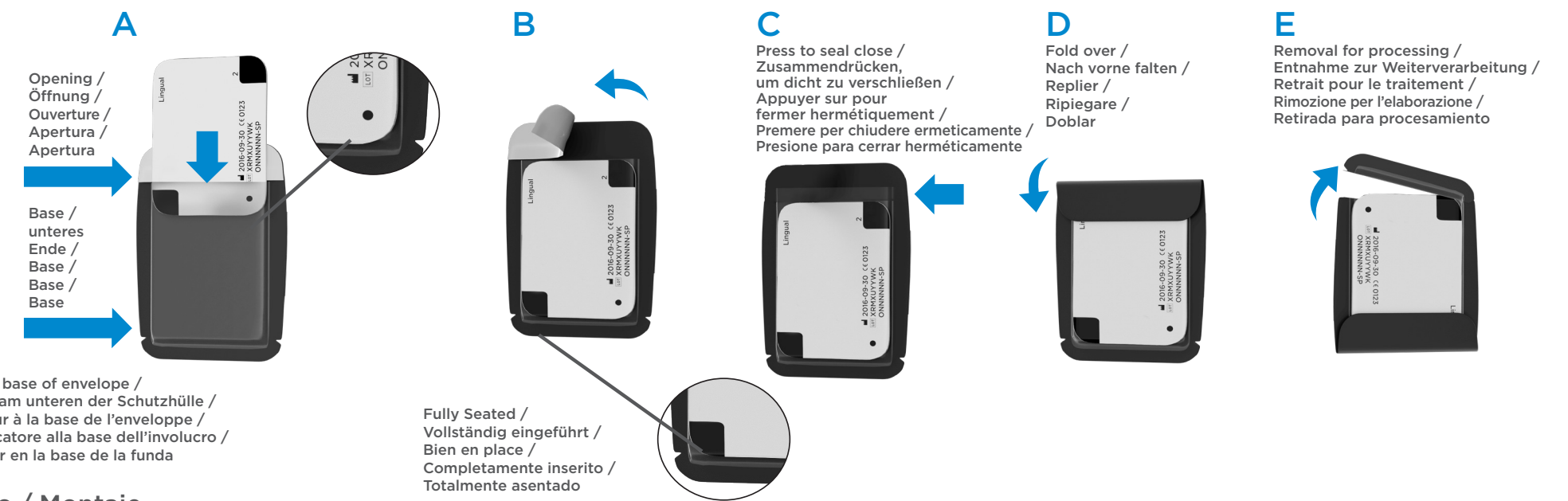


1.0 Set Up / Vorbereitung / Configuration / Impostazione / Preparación

1.1 Envelope Box / Box mit Schutzhüllen / Boîte d'enveloppes / Confezione / Caja de fundas

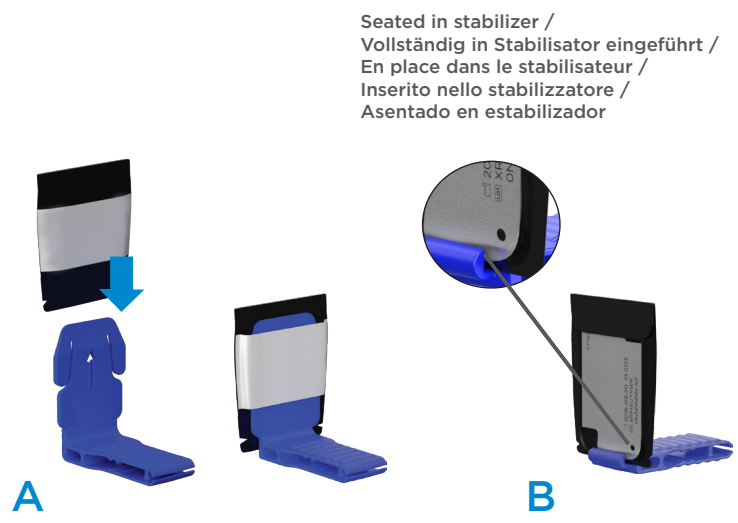


1.2 Phosphor Plate / Speicherfolie / Plaque phosphore / Lastra ai fosfori / Placa de fósforo

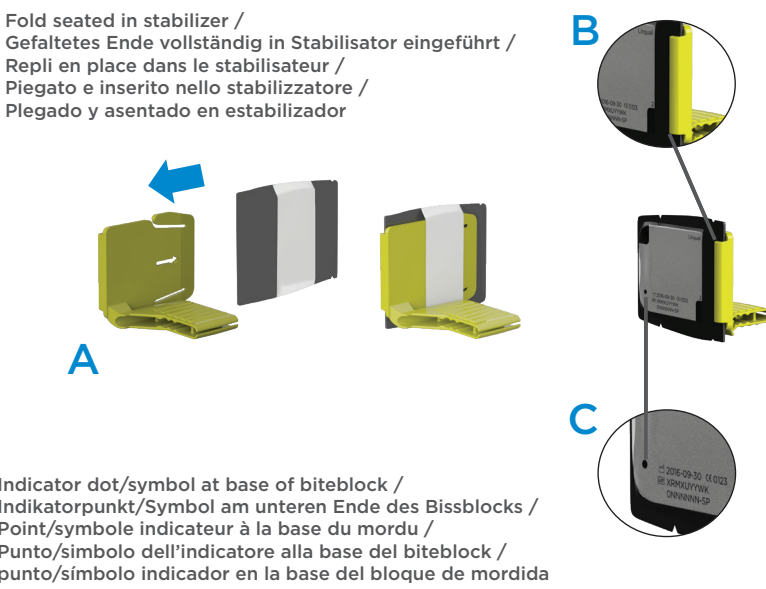


2.0 Assembly / Zusammenbau / Assemblage / Montaggio / Montaje

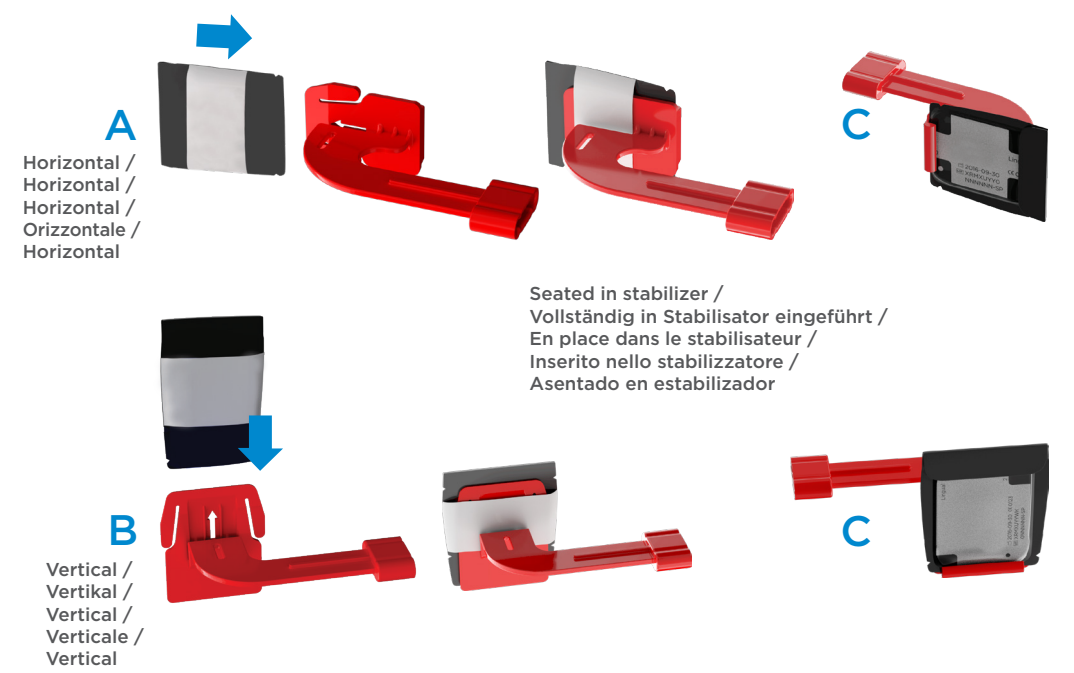
2.1 Anterior / Frontzahn / Antérieur / Anteriore / Anteriores



2.2 Posterior / Molar / Postérieur / Posteriore / Posteriores

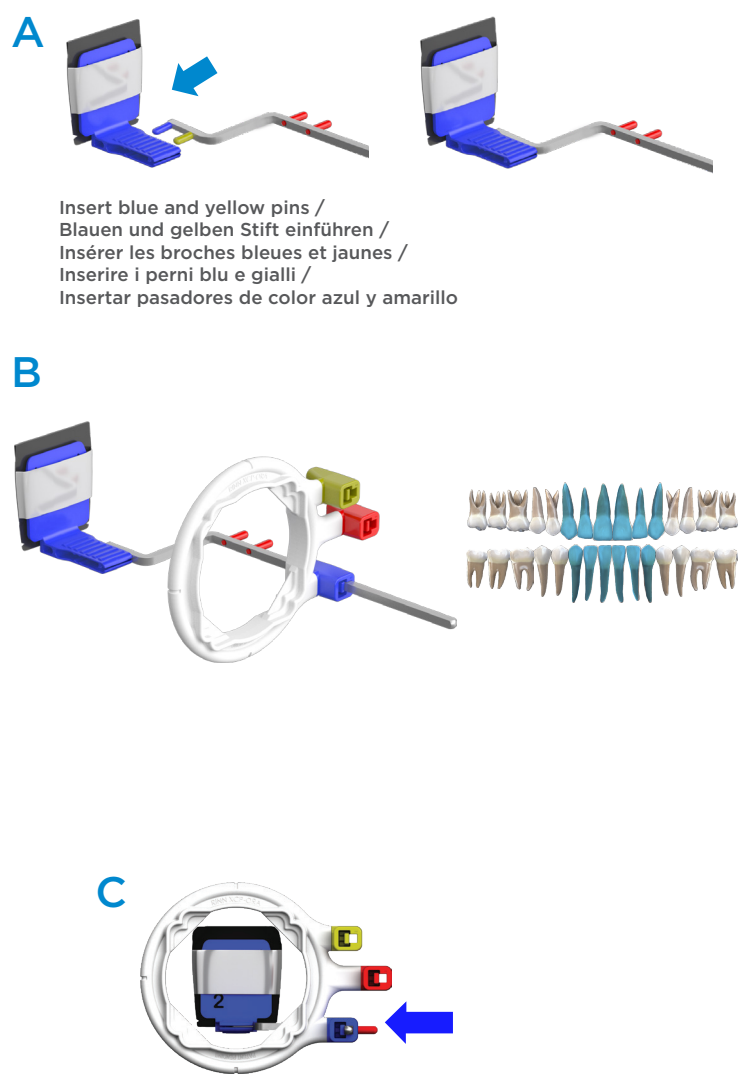


2.3 Bitewing / Bissflügel / Bitewing / Bitewing / Radiografía interproximal

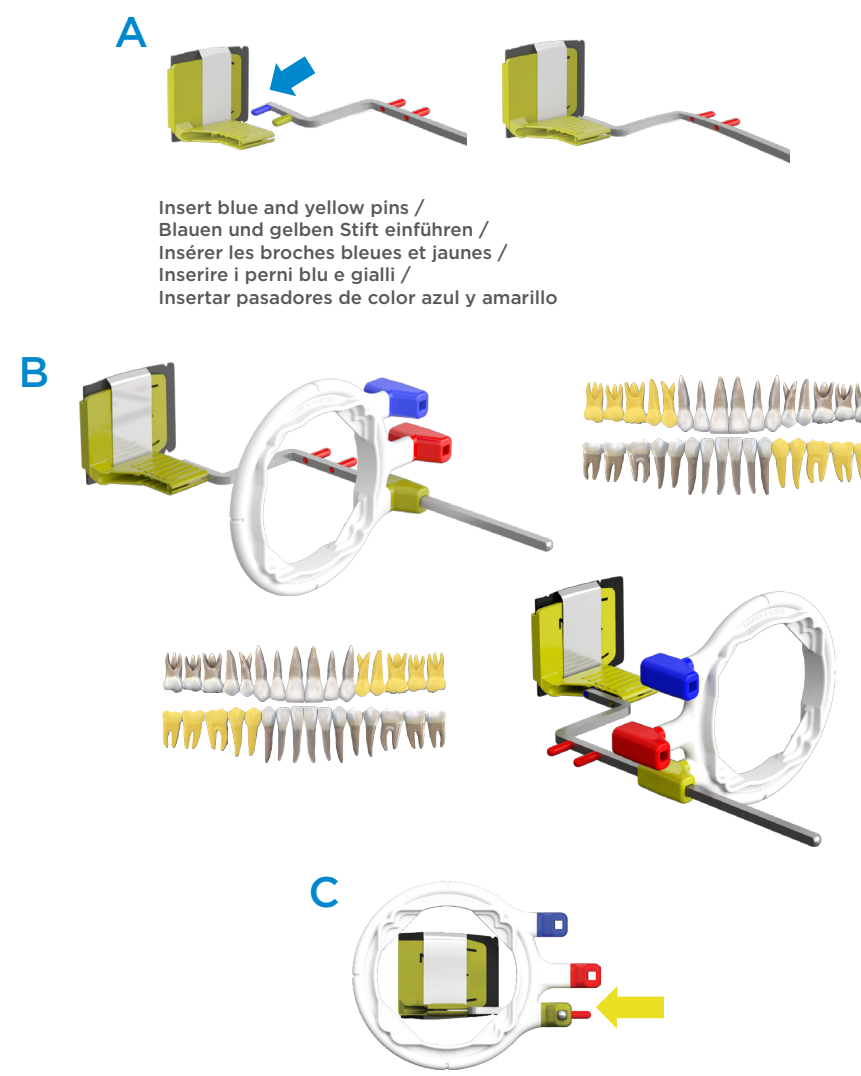


3.0 Arm and Ring / Führungsstange und Ring / Bras et anneau / Braccio e anello / Brazo y anillo

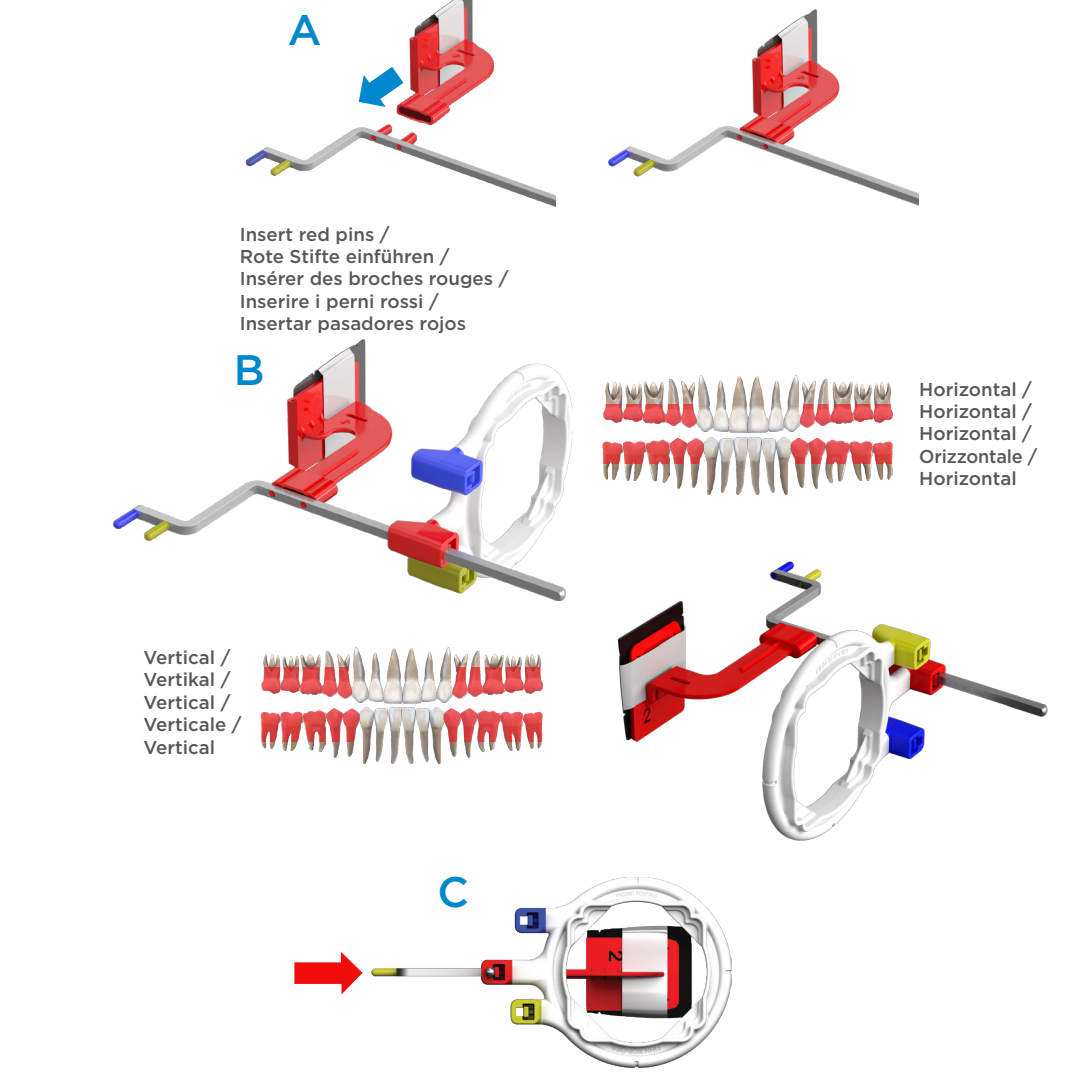
3.1 Anterior / Frontzahn / Antérieur / Anteriore / Anteriores



3.2 Posterior / Molar / Postérieur / Posteriore / Posteriores

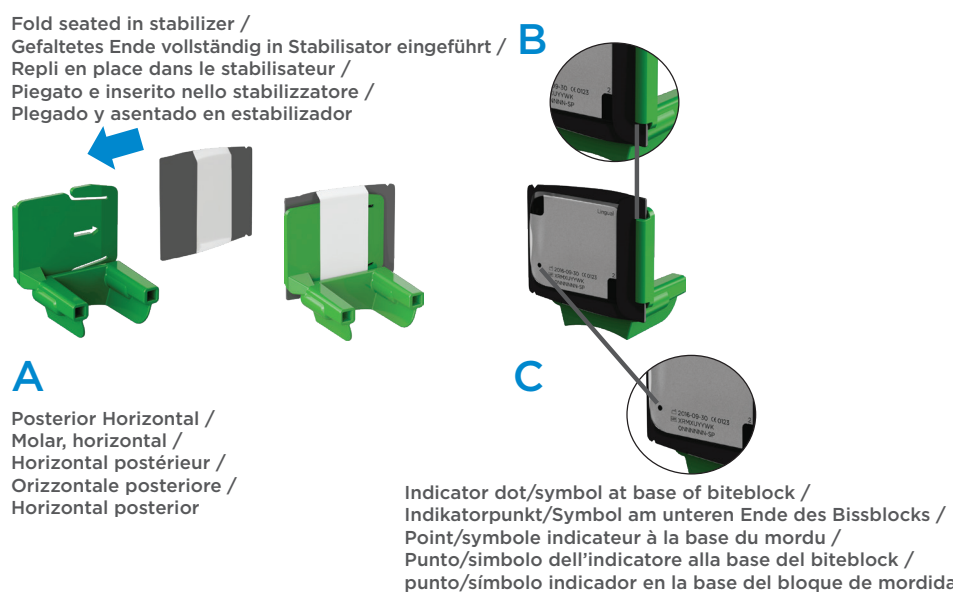


3.3 Bitewing / Bissflügel / Bitewing / Bitewing / Mordida

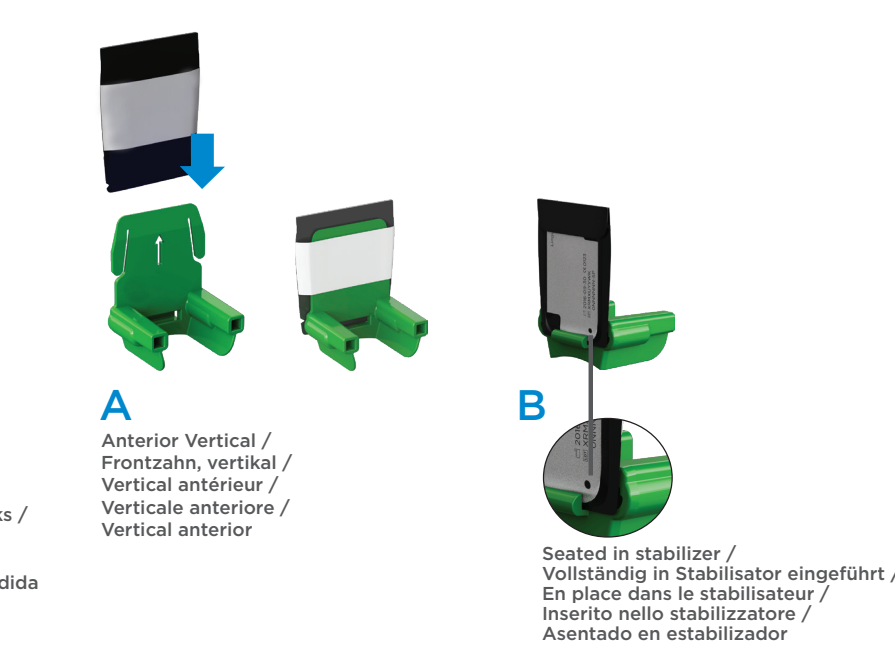


4.0 Endodontic Assembly / Zusammenbau des endodontischen Systems / Assemblage endodontique / Montaggio endodontico / Montaje para endodoncia

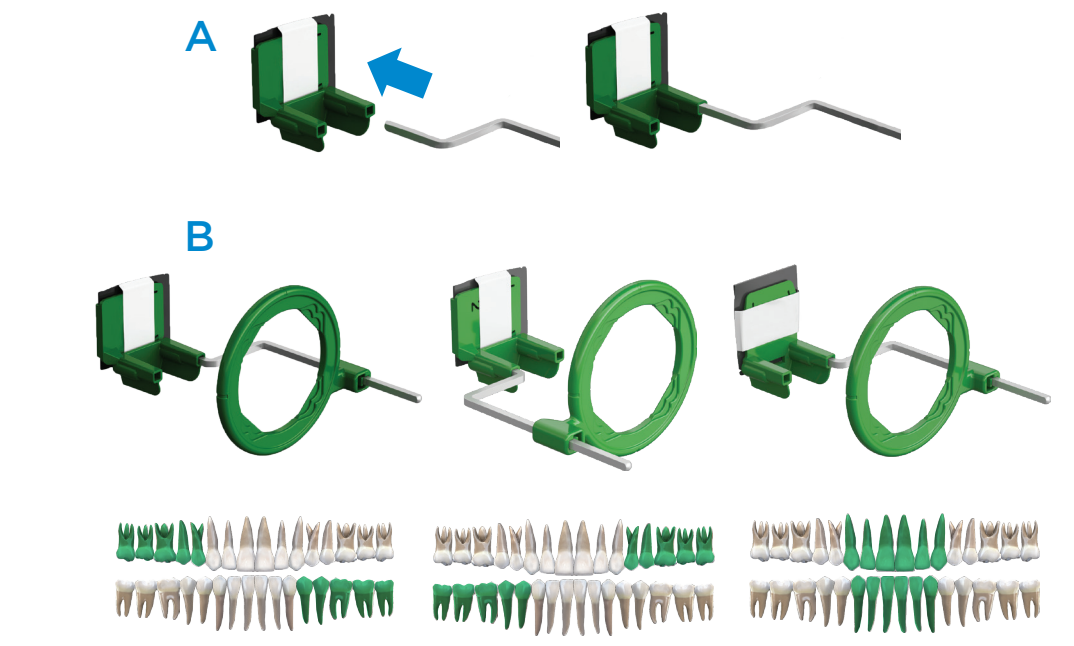
4.1 Horizontal / Horizontal / Horizontal / Orizzontale / Horizontal



4.2 Vertical / Vertikal / Vertical / Verticale / Vertical



4.3 Arm and Ring / Führungsstange und Ring / Bras et anneau / Braccio e anello / Brazo y anillo



Ordering Information

Rinn® XCP-PSP Fit™
Phosphor Plate Envelopes with Secure Band

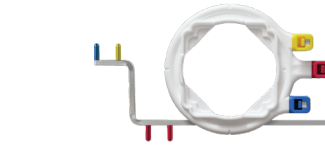


- 552710 PSP Envelopes, Size #0 100-pk
- 552711 PSP Envelopes, Size #1 100-pk
- 552712 PSP Envelopes, Size #2 200-pk
- 552714 PSP Envelopes, Size #2 100-pk
- 552713 PSP Envelopes, Size #3 100-pk

Rinn® XCP-PSP Fit™
Phosphor Plate Holders

- | | | | |
|------------------------------|---------------------------------|------------------------------------|-------------------------------|
| | | | |
| Anterior Thin | Posterior | Horizontal Bitewing | Endo Horizontal |
| 552740 Anterior Thin #0 (4) | 552750 Posterior #0 (4) | 552760 Horizontal Bitewing #0 (4) | 552781 Endo Horizontal #2 (4) |
| 552741 Anterior Thin #1 (4) | 552751 Posterior #1 (4) | 552761 Horizontal Bitewing #1 (4) | |
| 552742 Anterior Thin #2 (4) | 552752 Posterior #2 (4) | 552762 Horizontal Bitewing #2 (4) | |
| 552743 Anterior Thin #2 (10) | 552753 Posterior #2 (10) | 552763 Horizontal Bitewing #2 (10) | |
| | | 552764 Horizontal Bitewing #3 (4) | |
| | | | |
| Anterior Thick | Vertical Bitewing | Endo Vertical | |
| 552730 Anterior Thick #1 (2) | 552770 Vertical Bitewing #2 (4) | 552790 Endo Vertical #1 (4) | |
| 552731 Anterior Thick #2 (2) | | 552791 Endo Vertical #2 (4) | |

Rinn® XCP-ORA®
One Rin & Arm Positioning System



- 550771 XCP-ORA Arm & Ring, 1-pk
- 550772 XCP-ORA Arm & Ring, 2-pk
- 550777 XCP-ORA Arm & Ring Clinic Pack 6-pk
- 550773 XCP-ORA Ring only, 1-pk
- 550774 XCP-ORA Arm only, 1-pk

Rinn® XCP®
Aiming Arm & Rings



- 550597 Endo Arm (No pins)
- 550598 Endo Ring (Green)

Rinn® XCP-PSP Fit™ Kits

- 552700 Complete Size 0 Solution Kit
Contains: Envelopes #0 (100), Anterior Thin #0 (4), Posterior #0 (4), Bitewing Hor. #0 (4), ORA Ring & Arm (1)
- 552701 Complete Size 1 Solution Kit
Contains: Envelopes #1 (100), Anterior Thick #1 (2), Anterior Thin #1 (4), Posterior #1 (4), Bitewing Hor. #1 (4), ORA Ring & Arm (1)
- 552702 Complete Size 2 Solution Kit
Contains: Envelopes #2 (100), Anterior Thick #2 (2), Anterior Thin #2 (8), Posterior #2 (8), Bitewing Hor. #2 (8), ORA Ring & Arm (1)
- 552703 Complete Endo Kit
Contains: Envelopes #1 (100), Envelopes #2 (100), Endo Hor. #2 (4), Endo Vert. #1 (4), Endo Vert. #2 (4), XCP Endo Arm (1), XCP Endo Ring (1)