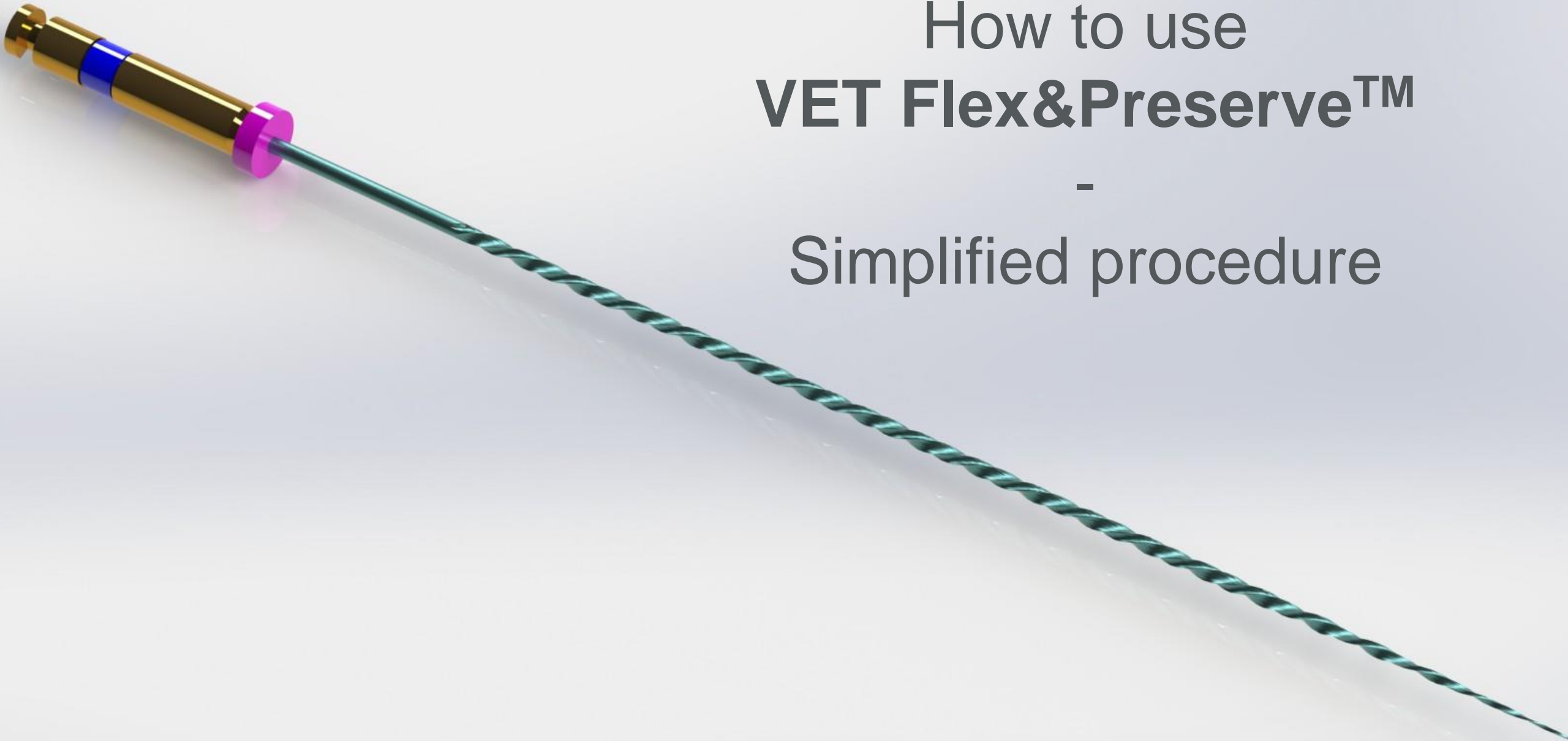


# The Patient, at the heart of our development

Introducing Advanced Endo Technology with dedicated  
Veterinary Reciprocating Files



How to use  
**VET Flex&Preserve™**  
-  
Simplified procedure



You can see the ISO color on the handle. The silicon endo stop helps to differentiate different ISO sizes with the same file color coding. Identification of the correct file now is more convenient.

TIP SIZE	BAND COLOR	Endo Stop
20	YELLOW	WHITE STOP
30	BLUE	WHITE STOP
40	BLACK	WHITE STOP
50	YELLOW	PURPLE STOP
60	BLUE	PURPLE STOP
70	GREEN	PURPLE STOP
80	BLACK	PURPLE STOP
90	WHITE	BLUE STOP
100	YELLOW	BLUE STOP
120	BLUE	BLUE STOP
140	BLACK	BLUE STOP

# 1. Sterilize the files before use



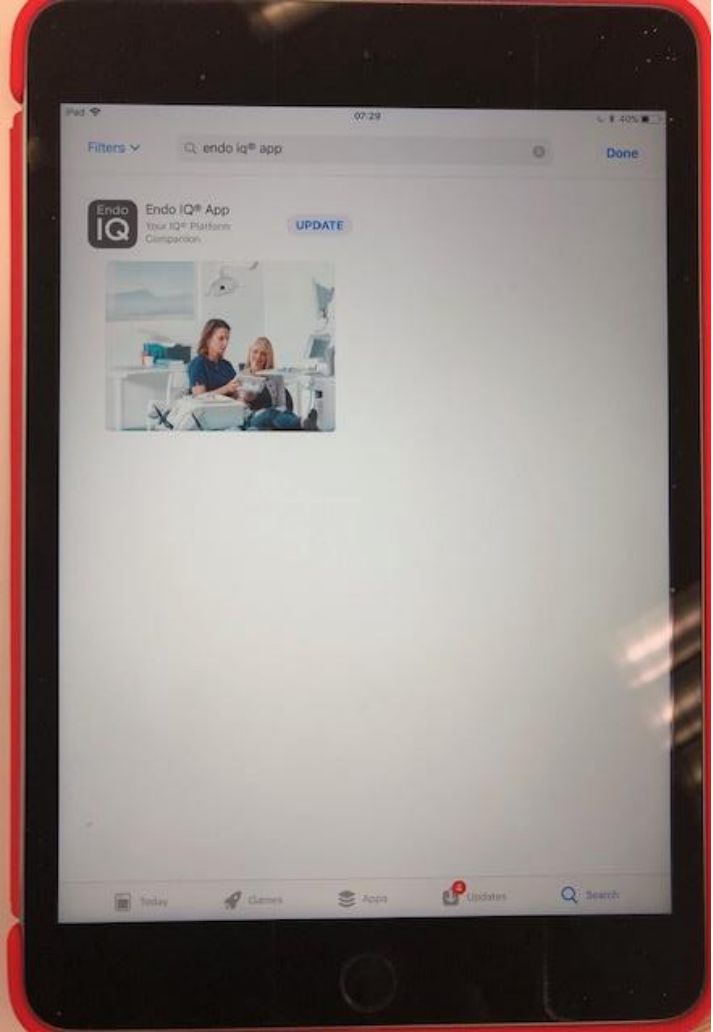
Please  
tear  
here

## Sterilization

Files must be sterilized before use. ANSI/ADA Specification 28 recommends:

- Scrub the instruments with soap and warm water
- Rinse thoroughly with distilled or deionized water
- Allow to air dry
- Place the instruments, unwrapped, in the autoclave tray
- Use fresh distilled or deionized water
- Steam Autoclave at 136°C (+/- 2°C) for 20 minutes
- Recommended file disposal: Place used files in Biohazard Sharps container

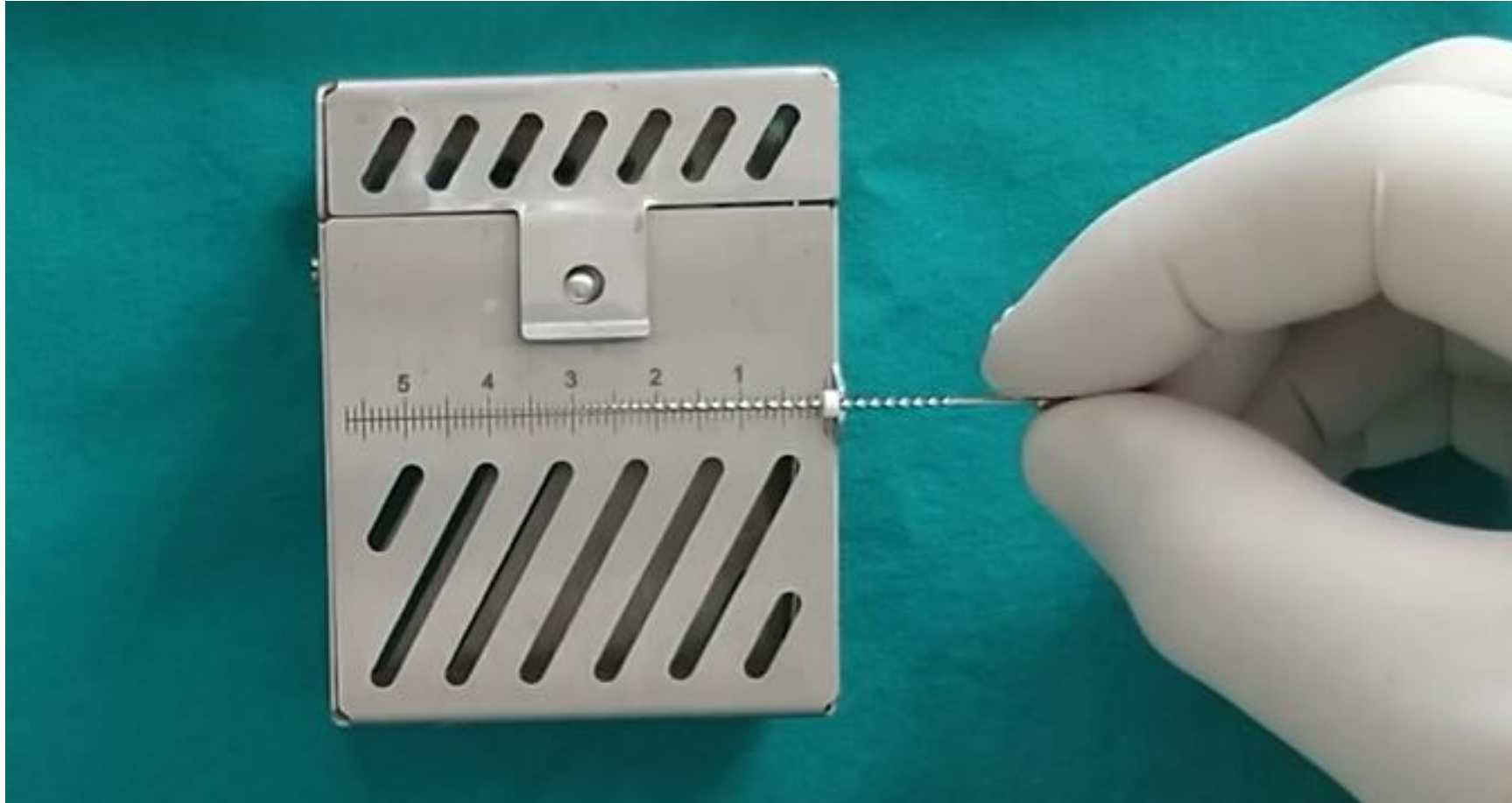
# 2. Download the Endo IQ app from the App Store®



3. Scout canal with a hand file to establish working length. Access through the fracture side is advocated. Confirm working length with a well-angulated preoperative radiograph.



## 4. Measure your working length.



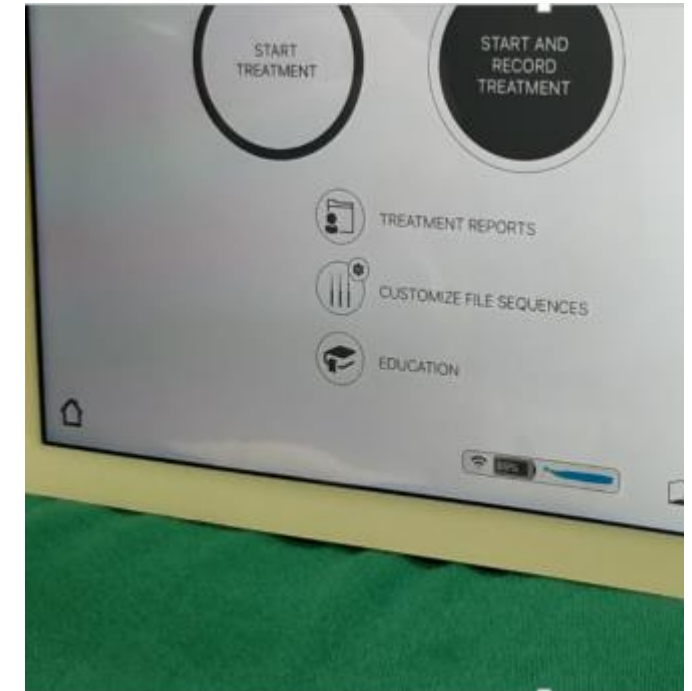
5. Connect your X-Smart IQ hand piece to your iPad® via Bluetooth. Always choose WaveOne Gold settings (under customize file sequence), this way, your instruments work in reciprocation. Torque and speed are pre-set!



Click on the grey button to activate bluetooth



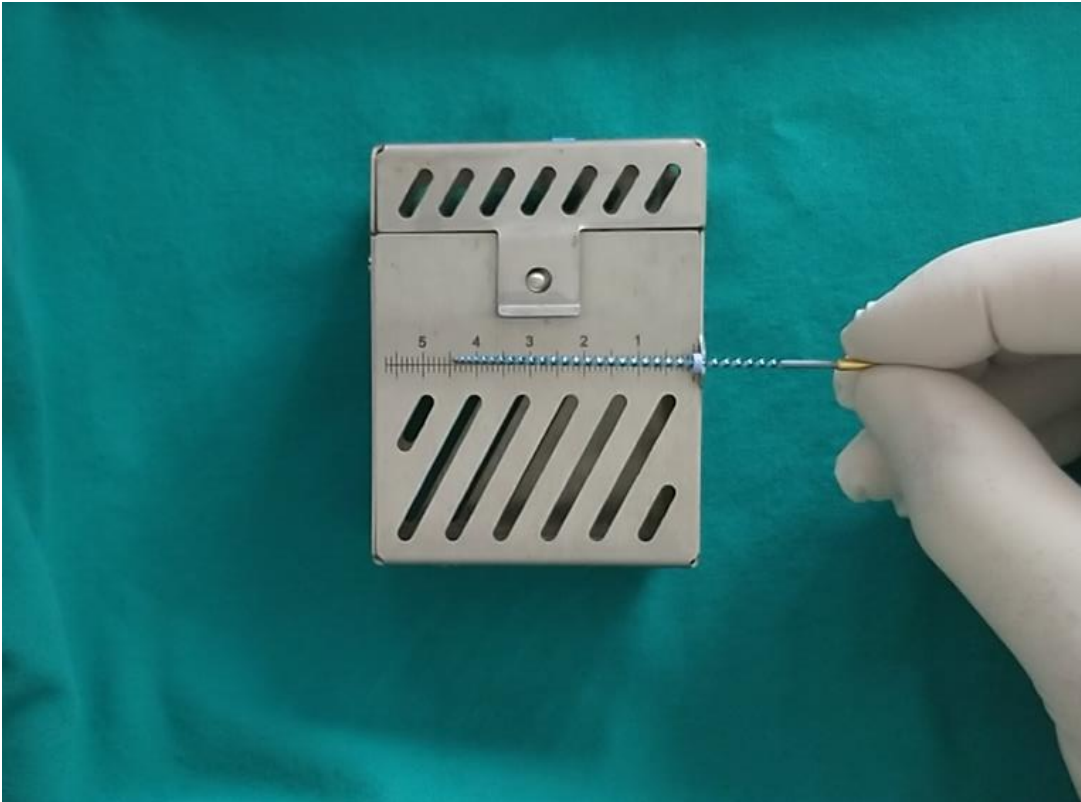
Select your device number



Select WaveOne Gold under “Customize File Sequence” and start your treatment



6. Move your ISO 20 VET Flex&Preserve stopper to working length. Always start your shaping procedure with an ISO 20.



7. Start root canal debridement with ISO 20, use irrigation after each file increment through the entire procedure.



## 8. Shaping procedure (please consult online DFU for details)

<https://www.dentsplysirona.com/en-us/products/endodontics/EndoVet.html>

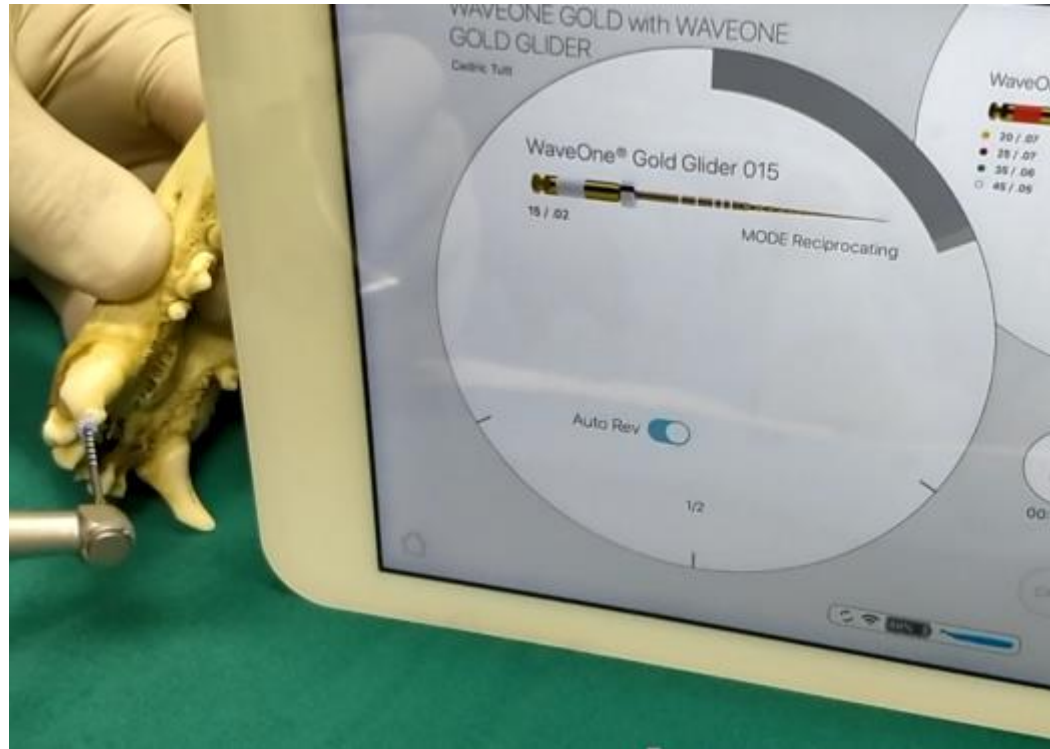
- Allow the instrument to move apically for 10-15 millimeters. After shaping 10-15mm of the canal, remove and clean the file, then irrigate, recapitulate with a smaller size hand file and re-irrigate.
- With light pressure, allow the file to progress down the canal.
- Eliminate coronal restrictions and improve shaping in canals where irregular cross-sections may exist, by cutting on the upstroke.
- In narrower canal situations, use a smaller size hand file to navigate to the apical delta. Continue instrumenting with this file until there is no resistance at length.
- In as many passes as required, take the file to the full working length. Once length has been reached, remove the file to avoid apical perforation.
- Use copious irrigation; re-verify canal patency throughout the procedure.
- Irrigate using sodium hypochlorite with activation in canal. Rinse with sterilized saline or de-ionized water.
- Inspect cutting flutes routinely upon removal for presence of unwinding and straightening (or elongation). If deformation is noted, discard and use a new file.
- If the file is loose at length and with no debris in the apical flutes, progress to the next larger file if necessary. Continue shaping as described above.
- Inspect the flutes; if they are full of debris, then confirm final shaping size by gauging the apical third with a hand file of the same size as the last shaping file.

9. Continue to use the instruments in increments of 10 (start with ISO 20, then 30, 40 etc.) until your final shaping size is reached. Always clean the file flutes during filing.

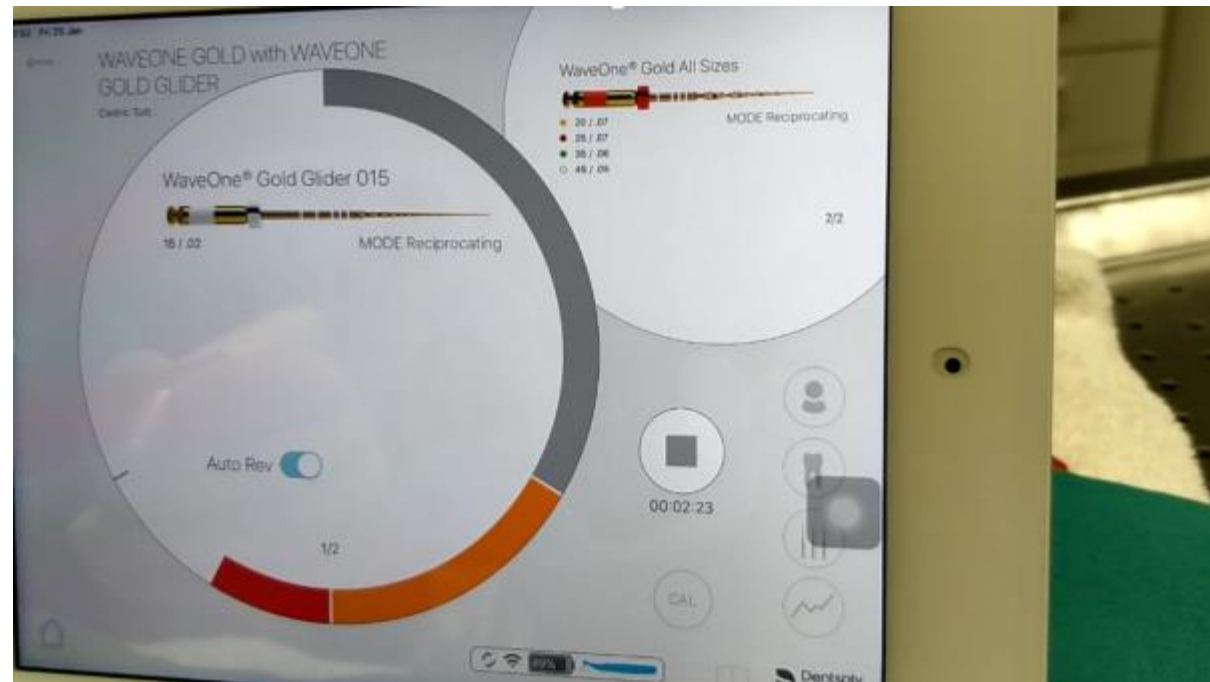
EDTA  
Conditioner  
(ProLube) →



# 10. App functions - You can see the torque increase on your iPad® (grey, orange and red bar)



11. Safety Function – If the torque increases into the red bar, the motor will switch to auto reverse. The file will screw out of the canal. Stop and start your hand piece again and continue your treatment.



## 12. How do I know my final shaping size is reached?

- Inspect the flutes; if they are full of clean shavings, then confirm final shaping size by gauging the apical third with a hand file of the same size as the last shaping file.
- If the instrument is snug at length, the canal is shaped and ready to be obturated.
- If the hand file is loose at length, proceed shaping with the next larger size. Gauge the apical third after each instrument and stop here.
- When the size is confirmed, proceed with irrigation, drying and obturation protocol.

# 13. Reuse protocol: Do not overuse the files for your own and your patients' safety

- Extremely curved = 2 canals max
- Moderately / Slightly curved = 4 canals max



# More Questions?

Do not hesitate to visit our website or call our service hotline

- [Dentsplysirona.com/EndoVet](https://Dentsplysirona.com/EndoVet)
- 1-855-437-8387 (1-855-4DS-VETS)



Enjoy

**VET Flex&Preserve™**

