

# Ribbon®

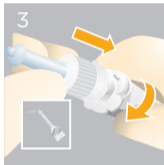
## Root Canal Sealer



1 Remove the cap by turning it 90° counter-clockwise and pulling it.



2 To ensure an appropriate mixing ratio, dispense a small amount of paste from the syringe prior to the first clinical application.



3 Attach the mixing tip to the syringe, aligning the notch. Then turn the tip 90° clock-wise.



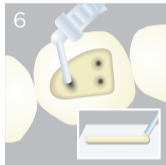
4 The intraoral tip can be rotated and the angle adjusted.

# Ribbon®

## Root Canal Sealer



For intraoral use, it is recommended to cover Ribbon® Mixing Syringe with the Disposa-Shield® Sleeve\*.



The sealer can be applied directly to the root canal orifices or extruded conventionally on a mixing pad.



After the sealer application, mixing tip and intraoral tip must be discarded. Replace the cap on the syringe head.



Caution, consult directions for use



Single Use



For Dental Use Only

Made in Germany

Manufactured For:  
DENTSPLY Tulsa Dental Specialties  
DENTSPLY International Inc.  
608 Rolling Hills Drive  
Johnson City, TN 37604  
Phone: 1.800.662.1202  
Fax: 1.800.597.2779  
dentsplysirona.com

© 2018 Dentsply Sirona, Inc.



\* Disposa-Shield® Sleeves (A88013) are available on our website.