



About Dr. Abuelezz

Ahmed Hussein Abuelezz graduated with a Bachelor of science degree from Misr International University (Egypt) in 2007. He completed his Master degree of science in Endodontics, Faculty of Dentistry, Ain Shams University in 2015, and completed his PHD in endodontics from Ain Shams University as well in 2019.

He started his academic career in 2009 as a teaching assistant in Misr International University and have been a lecturer in the department of endodontics there since 2019. He started his private practice in Cairo in 2012. Today his practice is limited to restorative procedures.

A restorative approach to Endodontics

About the patient

Female, aged 21
Tooth: Lower right first molar

Chief complaint

Patient was having spontaneous pain which increases with cold stimuli related to the lower right side.

Notable dental history

None

Diagnosis

Upon examination, there was a caries lesion related to the lower right first molar. Radiographic examination revealed proximity of the lesion to the pulp horn and combining it with the chief complaint, a final diagnosis of chronic irreversible pulpitis was concluded.



Figure 1: Preoperative X-Ray

“I chose TruNatomy® to be able to preserve as much dentin as possible to overcome occlusal load and increase the longevity of the tooth.”

Treatment plan

Access cavity was done as conservative as possible. TruNatomy® was the system of choice due to the young patient's age. We needed to preserve dentine as much as possible to increase the tooth ability to overcome occlusal load and increase the longevity of the final restoration. The initial file was K-file #15 in the mesial canals and K-file #25 in the distal canal. This made it possible to use that system as the TruNatomy® Prime would sufficiently clean the mesial canals and the TruNatomy® Medium would be more than enough for the distal canal. The activation of the irrigation solution was done using ultrasonic tips in each canal separately. Warm vertical compaction was done using Gutta Smart system with the TruNatomy® Comform Fit™ gutta percha as master cones and AH+ sealer.

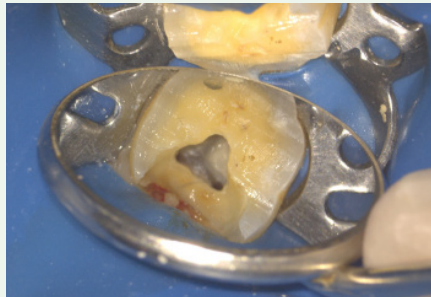


Figure 2: Conservative access cavity

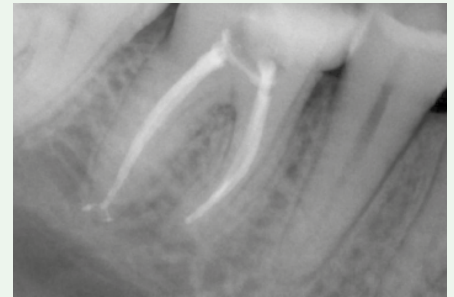





Figure 3: Postoperative X-Ray

After seeing the sealer going through the lateral canals in the distal root, we were confident that the activation of the irrigation solution was enough and that highlights its significance. A very thin layer of SDR was added to the floor to have a smooth surface for the endocrown.

dentsplysirona.com/trunatomy  #trunatomy 

			
All products except Irrigation Needle	Maillefer Instruments Holding Sàrl Chemin du Verger 3, CH-1338 Ballaigues, Switzerland Phone: +41 (0)21 843 92 92 endo@dentsplysirona.com dentsplysirona.com	2797	DENTSPLY DeTrey GmbH De-Trey-Straße 1, 78467 Konstanz, Germany
Irrigation Needle	Produits Dentaires SA Rue des Bosquets 18, CH-1800Vevey, Switzerland pdsa.ch	1639	PD Dental EU Thonon-les-Bains 74200, France

 **Dentsply
Sirona**