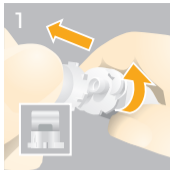


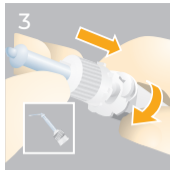
AH Plus Jet[®] Endodontic Sealer Mixing Syringe



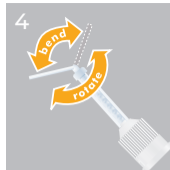
1 Remove the cap by turning it 90° counter-clockwise and pulling it.



2 To ensure an appropriate mixing ratio, dispense a small amount of paste from the syringe prior to the first clinical application.



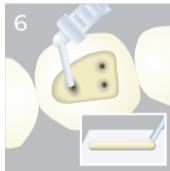
3 Attach the mixing tip to the syringe, aligning the notch. Then turn the tip 90° clock-wise.



4 The intraoral tip can be rotated and the angle adjusted.



5 For intraoral use, it is recommended to cover AH Plus Jet[®] Mixing Syringe with the Disposa-Shield[®] Sleeve.



6 The sealer can be applied directly to the root canal orifices or extruded conventionally on a mixing pad.



7 After the sealer application, mixing tip and intraoral tip must be discarded. Replace the cap on the syringe head.



Caution, consult instructions for use

AH Plus Jet[®] Endodontic Sealer

Improved consistency

Check e-IFU

AH Plus[®]
AH Plus Jet[®]
Endodontic Sealer

Next Generation

via our webpage:



www.dentsplysirona.com/IFU

See webpage for
instructions for use

or via QR code:



Check e-IFU: The list of potentially allergenic components has partially changed.