

THE DENTAL
SOLUTIONS
COMPANY™



Xios AE

Advanced Exposure

dentsplysirona.com/intraoral



Xios AE

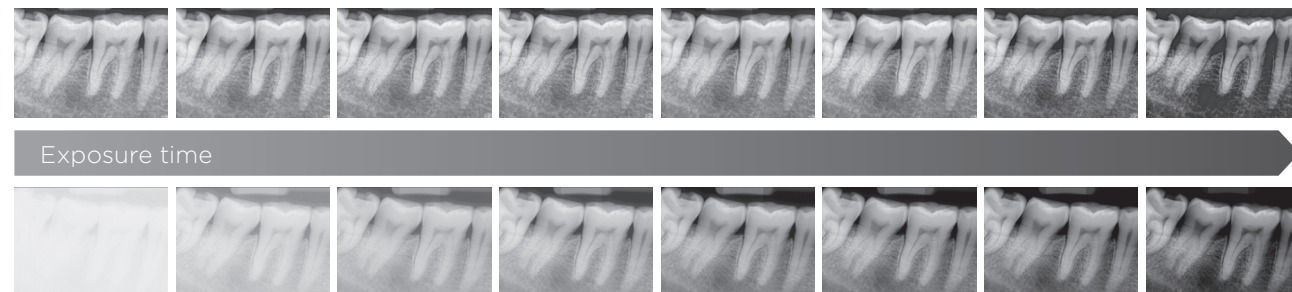
Xios AE

Dentsply Sirona's new Advanced Exposure technology offers you the extra security you need for your diagnosis. The Xios AE sensor combines the proven resolution of 33 lp/mm* with innovative filtering functions that provide even better contrast for indications such as caries and endodontics. Low-noise images, visibility of previously underexposed or overexposed image areas and a dedicated post-exposure correction that compensates for non-optimal exposure parameter settings all help to provide relevant advantages in diagnostic certainty. Your benefits? Diagnostic clarity at first glance. Images available within seconds. Confidence in your treatment assessment. This is what Advanced Exposure stands for.

Tolerant exposure spectrum - Your independence from precise generator settings.

Dose sensitivity and subsequent data processing are of essential significance for the achieved image quality. The new Xios AE sensor is much more resistant to fluctuations in exposure parameters. Even in lower dose ranges, more details become visibly evident.

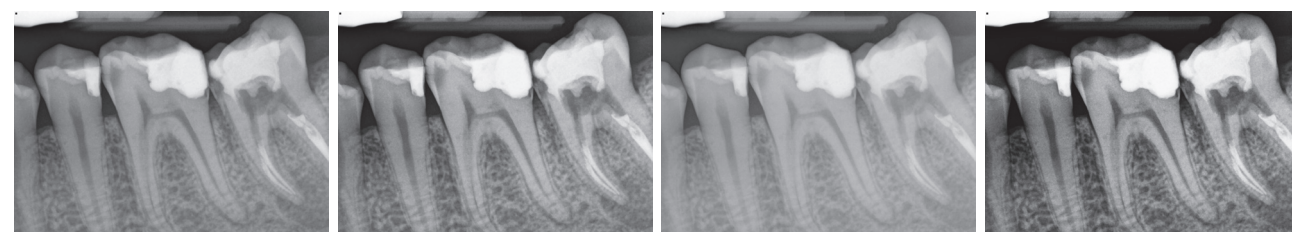
Xios AE



Regular sensor

Diagnostic support via software

In addition to the dynamic sharpening slider, the Xios AE provides you with four exclusive advanced filtering enhancements: General Dentistry, Endodontic, Periodontic and Restorative. Depending on the indication-based filter you select, relevant structures are highlighted accordingly in an individual image impression. With just a simple click of your mouse, you can choose which mode will best support the specific clinical situation.



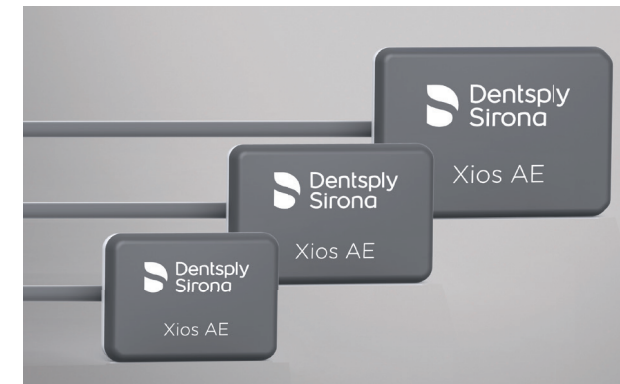
General Dentistry

Endodontic

Periodontic

Restorative

* Theoretical resolution



Sensor sizes

- Size 2:** Adult bitewings and single tooth images
- Size 1:** Single tooth images for smaller adults and bite wings for larger children
- Size 0:** Pediatric images



Easy cable exchange

In the event that a cable gets damaged, you have the ability to change it out completely in-house and within minutes. Only two screws need to be loosened to replace your cable and protect your investment, guaranteeing no lost productivity.



USB 3 - Secure data transfer

The use of Xios AE sensors in combination with the new USB 3 interface allows for accelerated information read-out and optimized data transfer. Protected connection plugs provide additional durability in daily practice use.



Your benefits with Xios AE

- High dynamic range
- Outstanding image quality for a safe and reliable diagnosis
- Exclusive Advanced Exposure filters and dynamic sharpening slider
- Optimized data transfer with new USB 3 module
- Proven investment security

Technical Data

Xios AE in combination with Sidexis version 4.3 (and higher)	
Sensors	
Active area - Size 0	18 mm x 24 mm
Sensor dimensions - Size 0	23.6 mm x 32 mm x 7.5 mm
Active area - Size 1	20 mm x 30 mm
Sensor dimensions - Size 1	25.4 mm x 38.3 mm x 7.5 mm
Active area - Size 2	25.6 mm x 36 mm
Sensor dimensions - Size 2	31.2 mm x 43 mm x 7.5 mm
Physical pixel size	15 µm

Xios AE in combination with Sidexis version 4.3 (and higher)	
Sensors	
Measured resolution	28 lp/mm
Theoretical resolution	33 lp/mm
Cable length	Up to max. 2.7 m
USB Interface	
USB interface port	USB 3
Power supply	USB port

Dentsply Sirona

Sirona Dental Systems GmbH
Fabrikstrasse 31, 64625 Bensheim, Germany
dentsplysirona.com

Procedural Solutions

Preventive
Restorative
Orthodontics
Endodontics
Implants
Prosthetics

Enabling Technologies

CAD/CAM
Imaging
Treatment Centers
Instruments