



Update-Description

inLab CAM SW 22.5.0



This document describes changes and improvements compared to previous version inLab CAM 22.4.0

May 2024

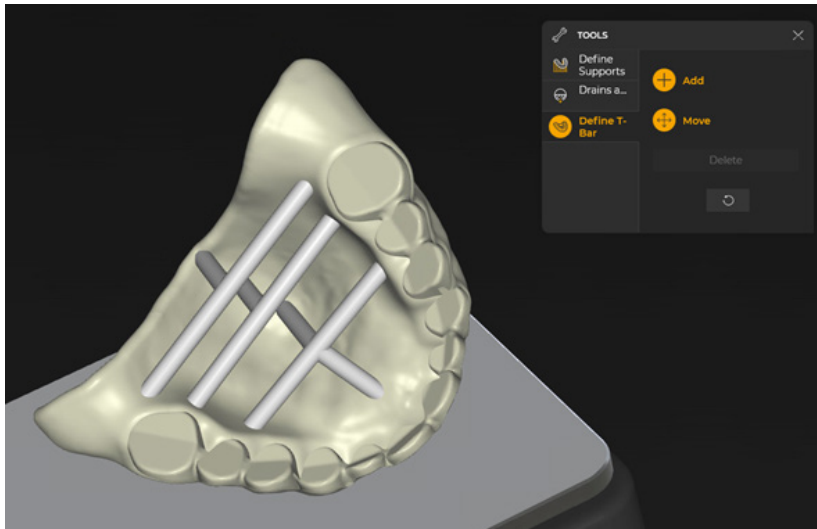
General

New features

New Tool „Define T-Bar”

A new generic tool is available which can be used to add reinforcement structures to reinforce print designs with a high tendency for warpage. The bars can be added, removed and moved manually.

For denture bases and denture try-ins, the t- bars are automatically proposed.



Materials

Dentsply Sirona

- Multi-job option available with SpeedFire

Kuraray Noritake

- New material available “Katana Zr ONE SPEED”
- New shades for e.cax ZirCAD Prime

New Device Software

Primemill

- Synchronization of Firmware version with CEREC 5.2.10

SpeedFire

- Synchronization of Firmware version with CEREC 5.2.10

Primeprint

- Bugfixes and improvements

Quality improvement and stability

As part of this release, several improvements have been made and known software bugs have been fixed. We always recommend using the latest software version.