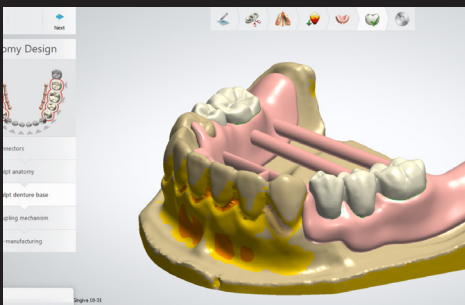


Quick Start Guide

This guide illustrates the Lucitone Digital Print Denture workflow steps for partials dentures. Reference the Illustrated Technique Guide (ITG) for detailed instructions on designing Partial Dentures and Print to Finish steps for your printer.

CAUTION:

- Instructions and parameters are applicable to Lucitone Digital Print Denture System products only.
- Designate a separate tray for each material type (e.g., one tray for Lucitone Digital Print and a separate tray for Lucitone Digital IPN). Do not mix material types and trays.
- Refer to the printer manufacturer's Instructions for Use/User Guide for complete printer information.



1 See ITG for designing partial dentures with Lucitone Digital Print.

2 Orient the parts to the angles specified in the Print to Finish ITG for your printer. Print designed partials.

3 Clean prepared denture teeth and denture base per steps in ITG/IFU.



4 Apply Lucitone Digital Fuse Step 2 and assemble teeth per ITG/IFU.

5 Apply Lucitone Digital Fuse Step 3 Total to the entire tooth structures using a flat brush. **Optional:** Apply to all or part of the denture base surface.

6 Cure denture(s) using the DS Digital Cure - Large Capacity Unit* or DS Digital Cure per ITG/IFU.



7 Remove support bars and finish as needed.

8 Confirm fit of partial on model prior to sending case out.



Scan to download Design and Print to Finish Illustrated Technique Guides and learn more about Lucitone Digital Print partial dentures.

*If using the Digital Cure - Large Capacity Unit tack cure the Total Sealer for 1 minute prior to cure cycle.
©2024, Dentsply Sirona. All rights reserved.
DP-0000749 Rev. 10/24