



# Lucitone Digital Print Denture™ System Certification Program

We are excited to partner with you to certify your lab for the Lucitone Digital Print Denture System.

**Complete the following three steps for lab certification:**

1. Complete the Self-study Syllabus (below).
2. Submit a full-over-full sample case including an upper and lower try-in and an upper and lower final denture using Dentsply Sirona print files.
  - Request print files: dsdigitaldentures@dentsplysirona.com.
  - Email photos of the final appliances and your laboratory contact information to dsdigitaldentures@dentsplysirona.com.
  - Dentsply Sirona will email a knowledge-check link following the receipt of the appliance photos.
3. Complete the 20-question knowledge check (true or false and multiple choice questions).
  - A minimum score of 80% is required for lab certification.

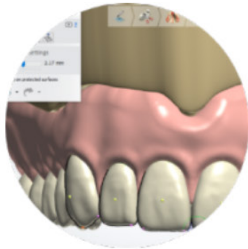
**Following the successful completion of the lab certification steps, you will receive:**

- The Certified Lucitone Digital Print Denture Laboratory digital logo.
  - A social media package including images and a certification announcement.
  - 16 NBC credit hours\*
- \*Available in the U.S.A. only

For questions or assistance, please contact Technical Support @800-243-1942, ext. 54212 or dsdigitaldentures@dentsplysirona.com.

## Self-study Syllabus

Visit the Lucitone Digital Print Denture System Learning Curriculum page at <https://www.dentsplysirona.com/lucitonecurriculum> and navigate the workflow steps and content.



Design



Print & Recycle



Clean



Fuse & Cure



Finish

Design	<ul style="list-style-type: none"> <li>• Review the design video &amp; downloads</li> </ul>	<input type="checkbox"/> Complete
Print & Recycle	<ul style="list-style-type: none"> <li>• Review the videos and downloads for your applicable printer</li> </ul>	<input type="checkbox"/> Complete
Clean	<ul style="list-style-type: none"> <li>• Review the clean process video</li> <li>• Review the clean section in the Illustrated Technique Guide for your applicable printer</li> </ul>	<input type="checkbox"/> Complete
Fuse & Cure	<ul style="list-style-type: none"> <li>• Review the fuse &amp; cure process videos and downloads</li> <li>• Review the fuse &amp; cure sections in the Illustrated Technique Guide for your applicable printer</li> </ul>	<input type="checkbox"/> Complete
Finish	<ul style="list-style-type: none"> <li>• Review the finish video</li> <li>• Review the finish section in the Illustrated Technique Guide for your applicable printer</li> </ul>	<input type="checkbox"/> Complete