

Distal Occlusal Restoration in Asymptomatic Patient

Patient Details

45 years old

Gender

Female

Initial situation of the patient

The patient came for a routine control appointment. She didn't report any symptoms but some bleeding during brushing.

Diagnosis

On the x-ray examination, a mesial translucency was found on tooth 1.6. The tooth presented an old class I composite restoration. Marginal inflammation and plaque were present. No symptoms were referred by the patient.



Dr. Giulio Pavolucci
Private practice
Montepulciano ITALY
Visiting professor at Siena University



Before

Initial situation: an old class I composite restoration on 1.6. New caries on the mesial wall. Presence of plaque and inflammation.



After

Final situation 2 weeks after the filling. Great comfort and no sensitivity at all were reported by the patient.

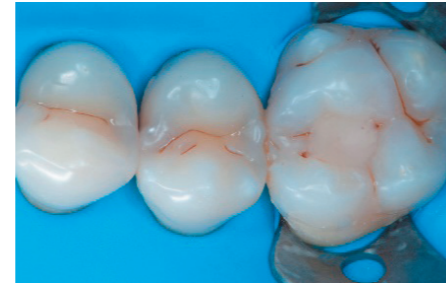


1. Initial situation: an old class I composite restoration on 1.6. New caries on the mesial wall. Presence of plaque and inflammation.



2. Final situation 2 weeks after the filling. Great comfort and no sensitivity at all were reported by the patient.

Clinical Workflow



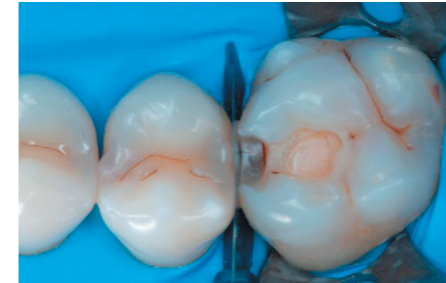
1. The situation after rubber dam isolation.



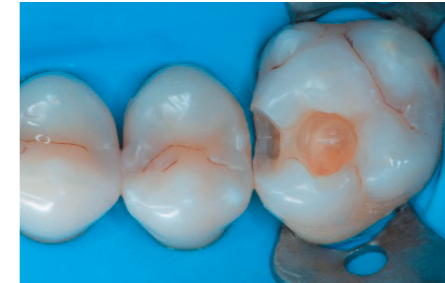
5. Buccal vision of the Palodent Plus system.



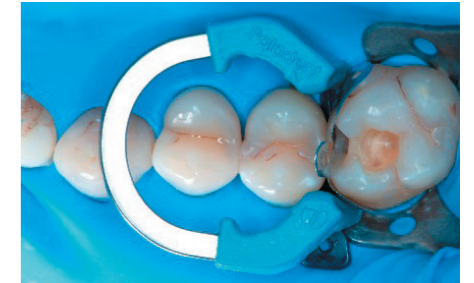
9. Transformation of a big class I into a small class I, using SDR in one shot up to 4 mm.



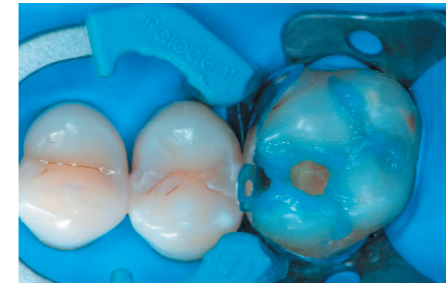
2. Initial cavity preparation, protecting the adjacent tooth with a WedgeGuard.



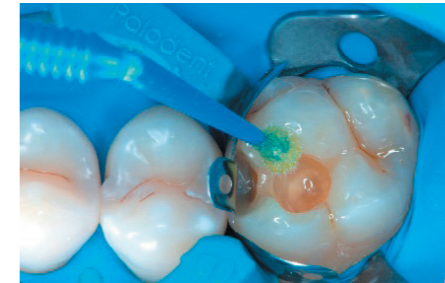
3. Class II cavity prepared.



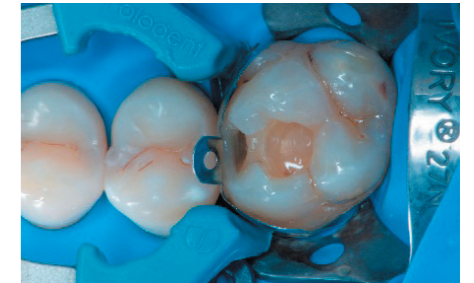
4. The complete Palodent Plus system in place: sectional matrix, wedge and ring.



6. Selective enamel etching procedure with DeTrey Conditioner.



7. Adhesion with a universal adhesive, Prime&Bond active.



8. Transformation of class II into class I, restoring the interproximal wall with Spectra ST A2.



10. The situation after the application of SDR.



11. Occlusal surface restored using Spectra ST A2.



12. The situation after rubber dam removal.



13. Occlusal check.



14. 2 weeks control.

Treatment plan

- Isolation
- Caries removal
- Matrix placement
- Adhesion
- Centripetal build-up technique
- Bulk restoration with SDR
- Occlusal restoration