

## ALL NEW IN 2019

# Midwest Stylus® Plus Mini

IMPROVED GRIP AND SHORTER HEAD  
TO ALLOW DEEPER ACCESS

*Only Dentsply Sirona  
offers Dynamic Speed  
Control in the head  
to limit noise and  
bearing wear*

Shorter head allows for extended  
bur projection to help with deeper preparations

Patented dimple-and-flat grip design aids  
tactile feel, index positioning, and control

Single-port water spray for  
powerful clearing of debris

Dynamic Speed Control provides power  
without excessive free speeds

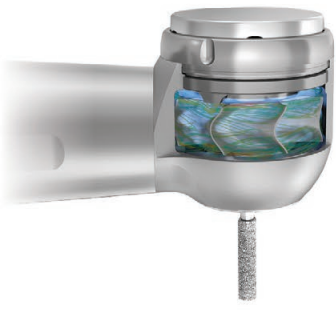
***Available in Midwest and K-style Quick Connect***

Fiber Optic | Push Button Chuck | Single-port Water Spray

792301 Midwest Stylus® Plus Mini — Midwest backend

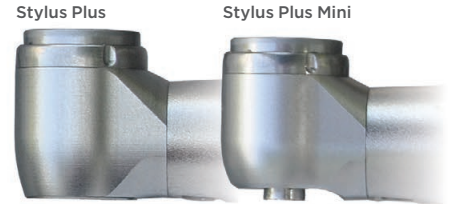
792331 Midwest Stylus® Plus Mini — K-style backend





## Performance Under Pressure

Only Dentsply Sirona offers the exclusive **Dynamic Speed Control** in high speed air handpieces to limit excessive free speeds at higher pressures. This not only protects bearings against excessive wear, but also reduces noise. The patented airfoil also functions as an airbrake during spin down to reduce stopping time and associated debris suck-back into the head.



## The Options You Need

The Dentsply Sirona Midwest Stylus® Plus family of handpieces has the options you need, with a wide variety of connection configurations and distinctive grips. The Stylus® Plus handpiece family is a proven solution backed by unparalleled Midwest service and support.

	Watts	Head Size Diam. x Ht. (mm)	Connection	Water Ports	Grip
<b>Midwest Stylus® Plus</b>	20	10.2 x 12.7	MW, K, S, N, W	4	Dimpled
<b>Midwest Stylus® Plus Mini</b>	20	9.7 x 11.8	MW, K	1	Dimpled with Flat Sides

Values are approximate and will vary dependent on coupler type and air pressure.

## Complete Cutting Solutions

As a leader in both handpiece and bur manufacturing, Midwest offers the ultimate integration of design, performance, and integrity.



## Keep It Clean

In clinical studies, correct cleaning and lubrication have proven to be the most important factors for handpiece performance and longevity. To ensure you get the most out of your handpieces, the Midwest® Automate® system:

- Reduces handling time by more than 80%
- Automatically removes debris, precisely lubricates all moving parts, and accurately expels excess
- Ensures consistent maintenance every time, without the mess of manual maintenance
- Optimizes long-term performance with quality maintenance



## Order Information

### Midwest Stylus® Plus High-Speed Handpieces

<b>NEW</b>	792301	Midwest Stylus® Plus Mini— Midwest backend
<b>NEW</b>	792331	Midwest Stylus® Plus Mini— K-style backend
	792400	Midwest Stylus® Plus — Midwest backend
	792410	Midwest Stylus® Plus — Sirona backend
	792420	Midwest Stylus® Plus — NSK backend
	792430	Midwest Stylus® Plus — K-style backend
<b>NEW</b>	792441	Midwest Stylus® Plus — W-style backend

### Couplers

790245	5-Hole Coupler — Midwest style
790246	6-Pin Coupler — Midwest style
790335	KS5 5-Hole Coupler — K-style
790336	KS6 6-Pin LED Coupler — K-style

### Warranty

Midwest Stylus® Plus is backed by nearly 90 years of Midwest handpiece experience, and a 2-year warranty.



Midwest Customer Service  
1-800-800-2888  
www.dentsplysirona.com

\*Data on file. See IFU for recommended operating pressure.