

THE DENTAL  
SOLUTIONS  
COMPANY™



Schick AE  
Advanced Exposure

# Clinician Preferred

[dentsplysirona.com/schickae](https://dentsplysirona.com/schickae)

A dark grey, rectangular device with rounded corners, connected to a grey cable on the left. The device features the Dentsply Sirona logo and the text 'Schick AE' in white. The device is shown against a dark blue background with a reflection below it.

Dentsply  
Sirona

Schick AE

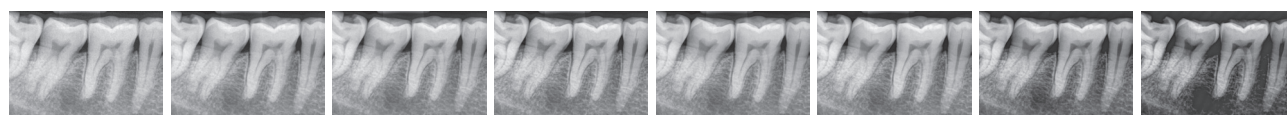
# Schick AE

Dentsply Sirona's new Advanced Exposure technology offers you the extra security you need for your diagnosis. The Schick AE sensor combines the proven resolution of 33 lp/mm\* with innovative filtering functions that provide even better contrast for indications, such as caries and endodontic cases. Low-noise images, improved visibility of details, and a dedicated post-exposure correction that compensates for non-optimal exposure parameter settings help to provide relevant advantages at a reduced dose. Your benefits? Superior images available within seconds and ultimate clinical confidence in your treatment assessment. All with Schick AE.

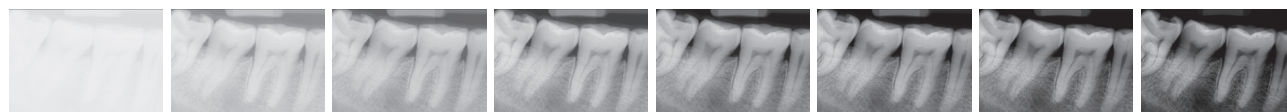
## Enhanced dynamic range - Consistent image quality at a lower dose.

Increased sensor sensitivity and an enhanced low-dose optimized exposure spectrum allow for optimal visibility and diagnostics at reduced exposure. Underexposed images are successfully counterbalanced, granting consistent image quality and dose flexibility.

Schick AE



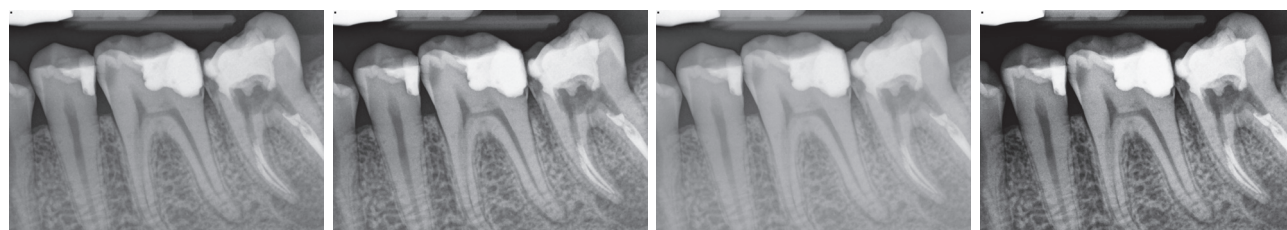
Exposure time



Standard sensor

## Diagnostic support via software

In addition to the dynamic sharpening slider, Schick AE provides you with four exclusive advanced filtering enhancements: General Dentistry, Endodontic, Periodontic and Restorative. Depending on the indication-based filter you select, relevant structures are highlighted accordingly in an individual image impression. With just a simple click of your mouse, you can choose which mode will best support the specific clinical situation.



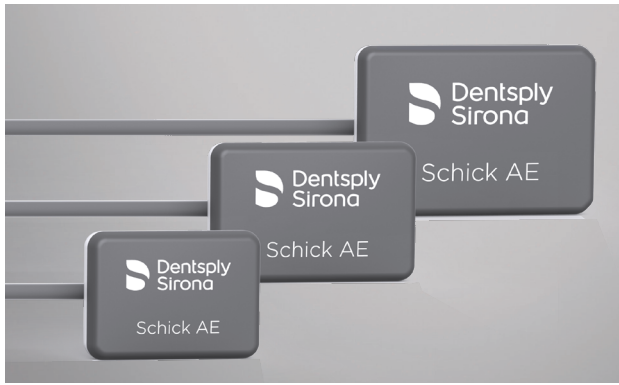
General Dentistry

Endodontic

Periodontic

Restorative

\* Theoretical resolution



## Sensor sizes

**Size 2:** Adult bitewings and single tooth images

**Size 1:** Single tooth images for smaller adults and bitewings for larger children

**Size 0:** Pediatric images



## USB 3 - Secure data transfer

The use of Schick AE sensors in combination with the new USB 3 interface allows for accelerated information read-out and optimized data transfer. Protected connection plugs provide additional durability in daily practice use.



## Easy cable exchange

In the event a cable is damaged, you can change it completely in-house and within minutes. Replacing cables is as simple as loosening two screws, saving time and guaranteeing no lost productivity while protecting your investment.



## Your benefits with Schick AE

- Superior image quality with dedicated diagnostic filtering
- Enhanced low-dose optimized dynamic range
- Dynamic sharpening slider for individual image enhancement
- Improved USB data transfer
- Easy cable exchange

## Technical Data

Schick AE in combination with Sidexis version 4.3 (and higher)	
Sensors	
Active area - Size 0	18 mm x 24 mm
Sensor dimensions - Size 0	23.6 mm x 32 mm x 7.5 mm
Active area - Size 1	20 mm x 30 mm
Sensor dimensions - Size 1	25.4 mm x 38.3 mm x 7.5 mm
Active area - Size 2	25.6 mm x 36 mm
Sensor dimensions - Size 2	31.2 mm x 43 mm x 7.5 mm
Physical pixel size	15 µm

Schick AE in combination with Sidexis version 4.3 (and higher)	
Sensors	
Measured resolution	28 lp/mm
Theoretical resolution	33 lp/mm
Cable length	Up to max. 2.7 m
USB Interface	
USB interface port	USB 3
Power supply	USB port

## **Dentsply Sirona**

Dentsply Sirona Academy  
13320-B, Ballantyne Corporate Pl, Charlotte, NC  
28277, USA

## **Procedural Solutions**

Preventive  
Restorative  
Orthodontics  
Endodontics  
Implants  
Prosthetics

## **Enabling Technologies**

CAD/CAM  
Imaging  
Treatment Centers  
Instruments