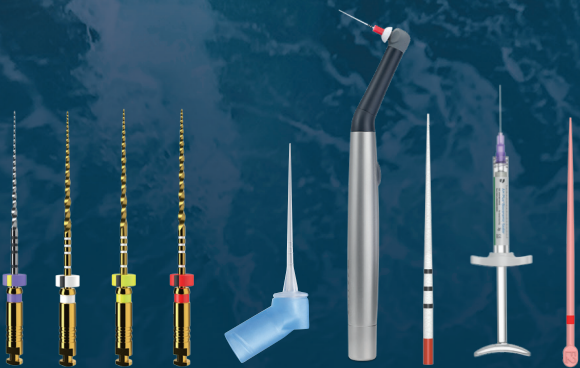




PERFORMANCE ACROSS ALL ROOT CANALS? CHALLENGE ACCEPTED.



Shaping • Cleaning • Obturation

ProTaper Ultimate™



BUILD YOUR ENDODONTIC PRACTICE WITH PROTAPER ULTIMATE™

Each root canal is unique. That's why the ProTaper Ultimate™ treatment solution is designed to support your passion to take on a wide range of canal anatomies. Now, you can expand your clinical cases with precision tools that deliver consistency, versatility and predictable outcomes, across more cases.

Unlimited performance across 3 essential procedures.



SHAPING

A sequence that covers the full range of anatomical situations, leading to predictable outcomes and a mastered progression.



CLEANING

Activated fluids promote deep cleaning and disinfection facilitating 3-D obturation and long-term success.



OBTURATION

Achieve the ideal fit 100% of the time via a bioactive seal and custom-shaped gutta-percha for a calibrated seal.



DS MOTORS

Because every angle, every acceleration, every speed matters to deliver the best performance, our motors are optimized for the ProTaper Ultimate™ workflow.



SHAPING

CHALLENGE:

PREDICTABILITY ACROSS MOST ANATOMIES.



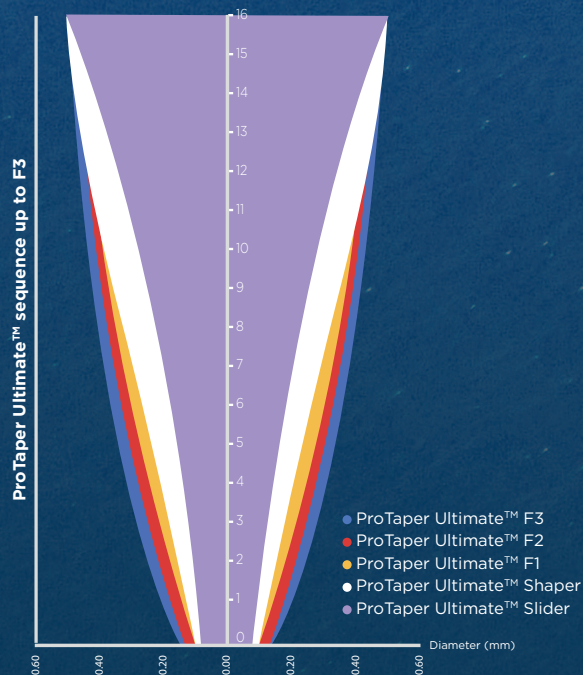
A full range of anatomies

- One Slider-Shaper-Finishers sequence to cover a full range of anatomical situations.
- Slider used directly to start the glide path in the majority of cases.¹
- Shaper features enhanced cutting efficiency and hauling of debris in the coronal two-thirds.
- Finishers in the apical third give you the flexibility for the most challenging anatomies, without breaking or unwinding.

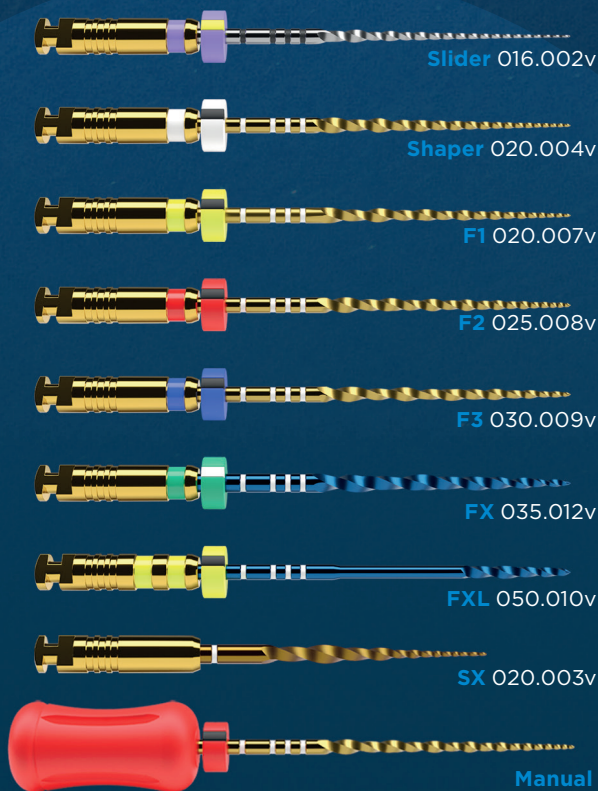
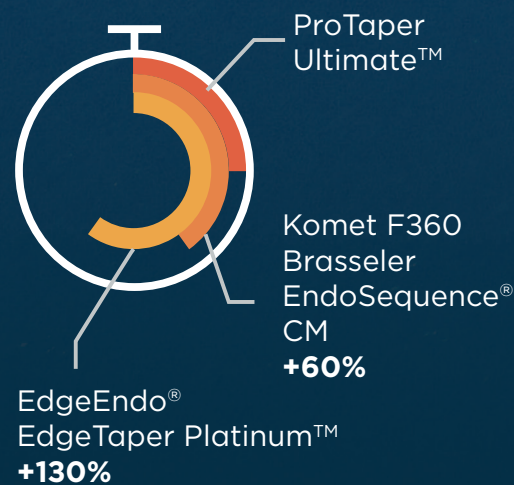


Predictable outcomes

100% of users consider that ProTaper Ultimate™ files provide a predictable root canal preparation.¹



Shaping time



All rotary files are available as hand files

BUILDING ON
MAILLEFER
HERITAGE

1. Based on a 2021 user evaluation of dental clinicians. Internal data on file. For more information contact Consumables-Data-Requests@dentsplysirona.com

CLEANING

CHALLENGE:
**OPTIMAL
DISINFECTION.**

IRRIGATION NEEDLE



Flexible

Curves and flexes easily for efficient cleaning and disinfection until the apex.



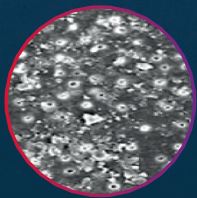
Effective

The unique shape of ProTaper Ultimate™ is ideal for thorough disinfection.

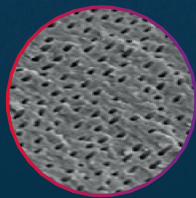
ENDOACTIVATOR®

More opened dentinal tubules

Passive soaks aren't enough. Activating irrigant solution produces a surface with more opened dentinal tubules, providing better obturation of lateral and accessory canals.²



Unactivated dentin surface



After Irrigant activation

SmartLite Pro EndoActivator™

COMING SOON



2. Kanter V, Weldon E, Nair U, et al. A quantitative and qualitative analysis of ultrasonic versus sonic endodontic systems on canal cleanliness and obturation. Oral Surg Oral Med Oral Pathol Oral Radiol Endod. 2011;112(6):809-813. doi:10.1016/j.tripleo. 2011.06.002

OBTURATION

CHALLENGE:

**IDEAL FIT IN
100% OF CASES.**

AH PLUS® BIOCERAMIC SEALER



Biocompatible

Induces tissue healing and does not stimulate periodontal tissue, even when in contact.



VS



Efficient

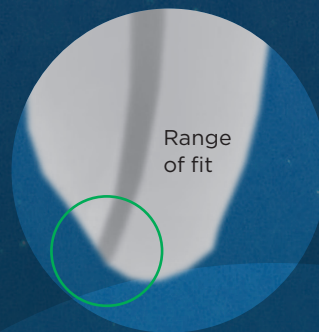
60% faster set time.³

CONFORM FIT® GUTTA-PERCHA POINT



Precision injected master cone

First cone fits every time.



Range
of fit



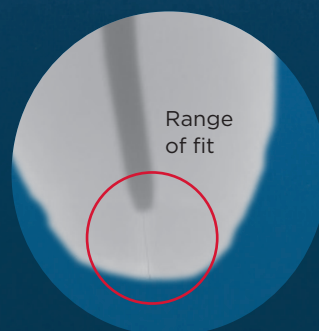
Range of fit with
**Conform Fit®
Gutta-Percha Point**



Calibrated seal

- Variable-tapered design for 100% cone fit.
- Provide a snug apical fit and accurate tug back you can feel.⁴
- Improved melt flow up to 5 mm beyond heat source for warm Gutta-Percha all the way to apex.⁴

VS



Range
of fit



Range of fit with
**traditional
gutta-percha**


3. Compared to EndoSequence® BC Sealer™, TotalFill® BC Sealer™, EdgeBioCeramic™ Sealer. Internal data on file. For more information contact Consumables-Data-Requests@dentsplysirona.com

4. Internal data on file. For more information contact Consumables-Data-Requests@dentsplysirona.com

ProTaper Ultimate™

Product References

ProTaper Ultimate™ Rotary Files

SX	6 x 19 mm	B ST PULR 619 OSX
		
Slider	3 x 21 mm	B ST PULR 321 OSL
	3 x 25 mm	B ST PULR 325 OSL
	3 x 31 mm	B ST PULR 331 OSL
	6 x 21 mm	B ST PULR 621 OSL
	6 x 25 mm	B ST PULR 625 OSL
Shaper	6 x 31 mm	B ST PULR 631 OSL
	3 x 21 mm	B ST PULR 321 OSH
	3 x 25 mm	B ST PULR 325 OSH
	3 x 31 mm	B ST PULR 331 OSH
	6 x 21 mm	B ST PULR 621 OSH
F1	6 x 25 mm	B ST PULR 625 OSH
	6 x 31 mm	B ST PULR 631 OSH
	3 x 21 mm	B ST PULR 321 OF1
	3 x 25 mm	B ST PULR 325 OF1
	3 x 31 mm	B ST PULR 331 OF1
F2	6 x 21 mm	B ST PULR 621 OF1
	6 x 25 mm	B ST PULR 625 OF1
	6 x 31 mm	B ST PULR 631 OF1
	3 x 21 mm	B ST PULR 321 OF2
	3 x 25 mm	B ST PULR 325 OF2
F3	3 x 31 mm	B ST PULR 331 OF2
	6 x 21 mm	B ST PULR 621 OF2
	6 x 25 mm	B ST PULR 625 OF2
	6 x 31 mm	B ST PULR 631 OF2
	3 x 21 mm	B ST PULR 321 OF3
FX	3 x 25 mm	B ST PULR 325 OF3
	3 x 31 mm	B ST PULR 331 OF3
	6 x 21 mm	B ST PULR 621 OF3
	6 x 25 mm	B ST PULR 625 OF3
	6 x 31 mm	B ST PULR 631 OF3
FXL	6 x 21 mm	B ST PULR 621 FXL
	6 x 25 mm	B ST PULR 625 FXL
	6 x 31 mm	B ST PULR 631 FXL

ASSORTMENT FILE PACKS


Slider,	5 x 21 mm	B ST PULR 521 SQE
Shaper,	5 x 25 mm	B ST PULR 525 SQE
F1, F2, F3	5 x 31 mm	B ST PULR 531 SQE

Irrigation Needle



x5	B NS DSIN 522 30G
x40	B NS DSIN D22 30G

ProTaper Ultimate™ Manual Files

SX	6 x 19 mm	B ST PULH 619 OSX
		
Slider	6 x 21 mm	B ST PULH 621 OSL
	6 x 25 mm	B ST PULH 625 OSL
	6 x 31 mm	B ST PULH 631 OSL
Shaper	6 x 21 mm	B ST PULH 621 OSH
	6 x 25 mm	B ST PULH 625 OSH
	6 x 31 mm	B ST PULH 631 OSH
F1	6 x 21 mm	B ST PULH 621 OF1
	6 x 25 mm	B ST PULH 625 OF1
	6 x 31 mm	B ST PULH 631 OF1
F2	6 x 21 mm	B ST PULH 621 OF2
	6 x 25 mm	B ST PULH 625 OF2
	6 x 31 mm	B ST PULH 631 OF2
F3	6 x 21 mm	B ST PULH 621 OF3
	6 x 25 mm	B ST PULH 625 OF3
	6 x 31 mm	B ST PULH 631 OF3
FX	6 x 21 mm	B ST PULH 621 OFX
	6 x 25 mm	B ST PULH 625 OFX
	6 x 31 mm	B ST PULH 631 OFX
FXL	6 x 21 mm	B ST PULH 621 FXL
	6 x 25 mm	B ST PULH 625 FXL
	6 x 31 mm	B ST PULH 631 FXL

ASSORTMENT FILE PACKS

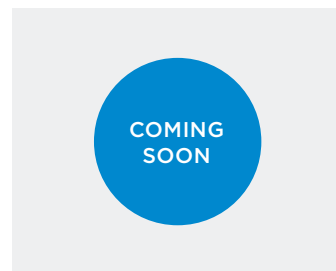
Slider,	5 x 21 mm	B ST PULH 521 SQE
Shaper,	5 x 25 mm	B ST PULH 525 SQE
F1, F2, F3	5 x 31 mm	B ST PULH 531 SQE

AH Plus® Bioceramic Sealer



Starter Kit	B KT AHBS 000 000
Syringe Refill	B OO AHBS 100 03G
Cannula Refill	B OO AHBS 020 24G

SmartLite Pro EndoActivator™



ProTaper Ultimate™ Absorbent Points

Box of 180 absorbent points

F1	B ST PULP MPP OF1
F2	B ST PULP MPP OF2
F3	B ST PULP MPP OF3
FX	B ST PULP MPP OFX
FXL	B ST PULP MPP FXL
ASSORTMENT	
F1-F3	B ST PULP MPP AST
30x-F1, 90x-F2, 60x-F3	

ProTaper Ultimate™ Conform Fit® Gutta-Percha Points

Box of 60 gutta-percha points

F1	B NS PULG FGP OF1
F2	B NS PULG FGP OF2
F3	B NS PULG FGP OF3
FX	B NS PULG FGP OFX
FXL	B NS PULG FGP FXL
ASSORTMENT	
F1-F3	B NS PULG FGP AST
12x-F1, 24x-F2, 24x-F3	

ProTaper Ultimate™ Treatment Solution Kit



B OO PTUL TSO KIT

ProTaper Ultimate™ Sequence 25 mm x5
ProTaper Ultimate™ SX 19 mm x6
ProTaper Ultimate™ Slider 25 mm x6
ProTaper Ultimate™ Shaper 25 mm x6
ProTaper Ultimate™ F1 25 mm x6
ProTaper Ultimate™ F2 25 mm x6
ProTaper Ultimate™ Absorbent Points Assortment
ProTaper Ultimate™ Conform Fit® Gutta-Percha Points Assortment
Irrigation Needle (5 units)

Files	Mailefer Instruments Holding Sàrl Chemin du Verger 3, CH-1338 Ballaigues	Dentsply DeTrey GmbH De-Trey-Straße 1, D-78467, Konstanz	2797
Gutta-Percha & Absorbent Points	Dentsply Tulsa Dental Specialties 608 Rolling Hills Drive, Johnson City, TN 37604	Dentsply DeTrey GmbH De-Trey-Straße 1, D-78467, Konstanz	2797
Irrigation Needle	Produits Dentaires SA Rue des Bosquets 18, CH-1800 Vevey	PD Dental EU 74200 Thonon-les-Bains, France	1639
AH Plus® Bioceramic Sealer	Maruchi, 2-208, Medical Industry Complex Bldg., 42-10, Taejanggongdan-gil, Wonju-si, Gangwon-do, KR-26311	Biogeri Am Pfeilshof 12, DE-22303 Hamburg	0197