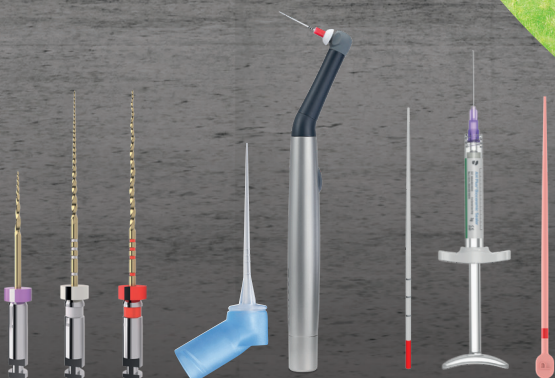


# PRESERVING DENTIN IN ITS NATURAL HABITAT? CHALLENGE ACCEPTED.



Shaping • Cleaning • Obturation

TruNatomy®

# SAFEGUARD THE ROOT CANAL'S NATURAL ANATOMY WITH TRUNATOMY®

When performing root canals, without preservation, much can be lost. Dentsply Sirona TruNatomy® treatment solution helps safeguard the natural anatomy of the root canal system. Specially designed to maintain structural dentin and tooth integrity, TruNatomy® ensures sufficient room for cleaning and disinfecting using the dedicated irrigation needle and the SmartLite Pro EndoActivator™ - bringing next-level care to patients.

Unlock next-level care across the entire workflow.



## SHAPING

Why should you remove more when you can preserve? A unique combination of features enables efficient root canal treatment while removing dentin only where needed.<sup>1</sup>



## CLEANING

The irrigation needle as well as the EndoActivator® are designed to provide enhanced cleaning.



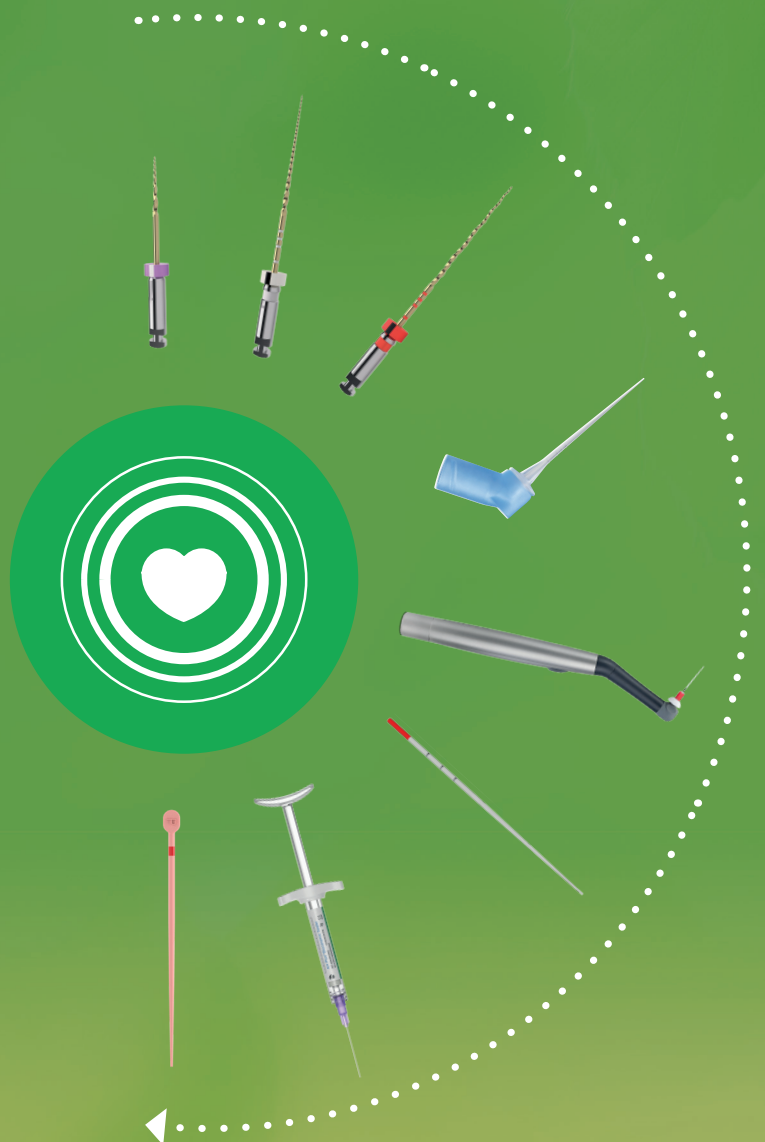
## OBTURATION

Gain confidence in your obturation with a sealer that creates an ideal environment for healing and Conform Fit® Gutta-Percha Points, designed to match the precise shapes created by the files.



## RESTORATION

Facing every step with confidence with Dentsply Sirona restorative materials.



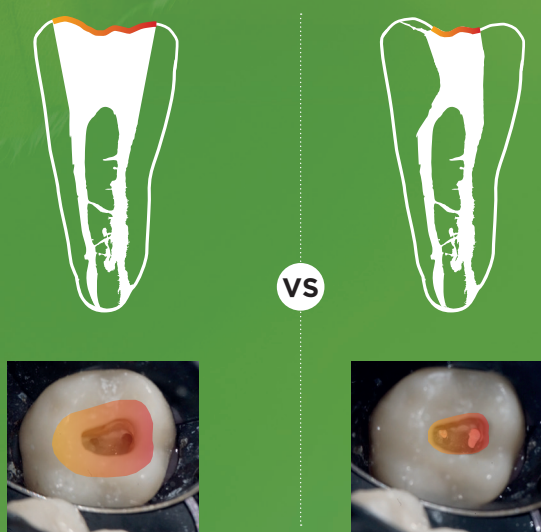
Use this QR code to access scientific data

# SHAPING

CHALLENGE:

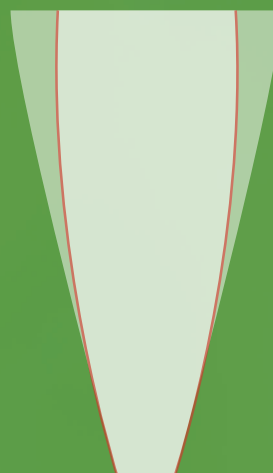
## PRESERVING STRUCTURAL STRENGTH.

Why dentin preservation? Research has shown that instrumentation can compromise the strength of the tooth – but strength is restored when more dentin is saved.<sup>2</sup> Part of saving more teeth is saving more tooth.



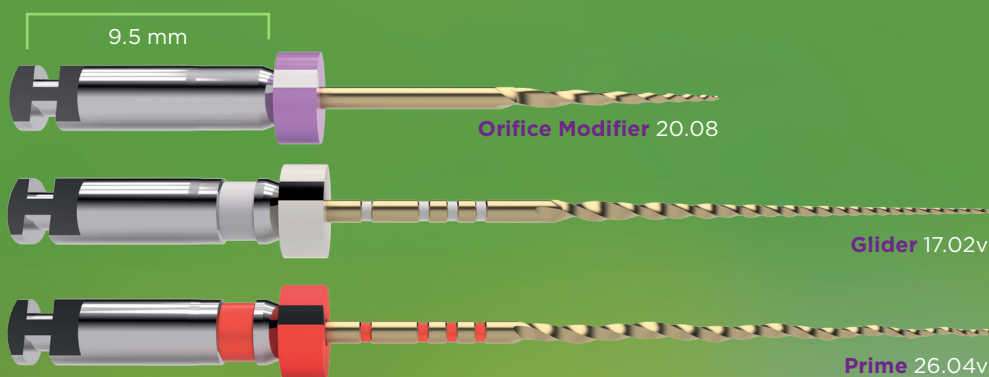
### Efficiency with less dentin removal

- A combination of dedicated heat-treated NITI with a 0.8 mm wire to better respect the root canal.<sup>4</sup>
- Patented off-centered cross section shaping files with regressive taper for superior efficiency.<sup>5</sup>



### No need for conventional straight line access

- TruNatomy® Orifice Modifier shapes the orifice to create the entry point without straight line access.<sup>3</sup>
- TruNatomy® preserves dentin in the peri-cervical area while ensuring sufficient apical debridement.<sup>3</sup>



All files operate at 500 rpm & 1.5 Ncm

2. Sedgley CM, Messer HH. Are endodontically treated teeth more brittle? J Endod. 1992 Jul;18(7):332-5  
3. Internal data on file. For more information, contact Consumables-Data-Requests@dentsplysirona.com  
4. Versus up to 1.2 mm for most generic variable tapered files  
5. Versus progressive taper design

# CLEANING

CHALLENGE:

## EFFICIENT DISINFECTION TO THE APEX.



### IRRIGATION NEEDLE



#### Flexible

- The irrigation needle features a flexible body for apical access with no resistance or damage to dentinal walls.<sup>3</sup>
- Soft polypropylene material delivers irrigation solutions close to the apex.<sup>3</sup>



#### Effective

- Back-to-back two-sided vent design maintains balance irrigation throughout canal. Aimed directly at the dentinal wall.<sup>3</sup>

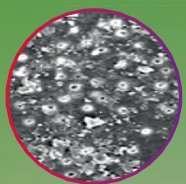
### ENDOACTIVATOR®

#### More opened dentinal tubules

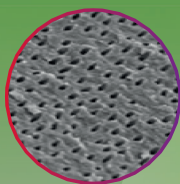
- Passive soaks aren't enough. Activating irrigants can help produce a surface with more opened dentinal tubules, allowing for better obturation of lateral and accessory canals.<sup>6</sup>

#### SmartLite Pro EndoActivator™

COMING  
SOON



Unactivated  
dentin surface



After irrigant  
activation



6. Kanter V, Weldon E, Nair U, et al. A quantitative and qualitative analysis of ultrasonic versus sonic endodontic systems on canal cleanliness and obturation. *Oral Surg Oral Med Oral Pathol Oral Radiol Endod.* 2011;112(6):809-813. doi:10.1016/j.tripleo.2011.06.002

# OBTURATION

CHALLENGE:

## OPTIMAL PERFORMANCE IN SMALLER SHAPES.

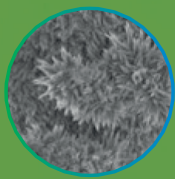
### AH PLUS® BIOCERAMIC SEALER

#### Self healing

- Bioactive seal creates ideal environment to produce HA and promote healing.<sup>3</sup>
- Provides a high pH for antimicrobial effect that promotes an osteogenic response.<sup>7</sup>

#### Gap-free bonding

- Sealer produces a wide range of hydroxyapatite crystals within dentinal tubules for gap-free bond between canal wall and gutta-percha.<sup>3</sup>



Hydroxyapatite

### CONFORM FIT® GUTTA-PERCHA POINT



#### Precise

- Variable tapered to match the shapes created by TruNatomy® files.
- Precise fit for the right tug back.
- 40% more accurate than traditional hand-rolled gutta percha.<sup>8</sup>



#### Safe

No natural rubber latex offers safety for patients with latex allergies.

#### Triple Lock™ your obturation




7. Holt DM et al. "The anti-microbial effect against enterococcus faecalis and the compressive strength of two types of mineral trioxide aggregate mixed with sterile water or 2% chlorhexidine liquid." J Endod. 2007 Jul;33(7):844-7

8. Peters, O. A., K. Schonenberger, and A. Laib. "Effects of Four Ni-Ti Preparation Techniques on Root Canal Geometry Assessed by Micro Computed Tomography." International Endodontic Journal Int Endod J 34.3 (2001): 221-30


### TruAnatomy® Orifice Modifier (20.08)

	3 x 16 mm	<b>B ST TNMY 316 OMD</b>
	6 x 16 mm	<b>B ST TNMY 616 OMD</b>


### TruAnatomy® Glider (17.02v)

	3 x 21 mm	<b>B ST TNMY 321 GLR</b>
	3 x 25 mm	<b>B ST TNMY 325 GLR</b>
	3 x 31 mm	<b>B ST TNMY 331 GLR</b>
	6 x 21 mm	<b>B ST TNMY 621 GLR</b>
	6 x 25 mm	<b>B ST TNMY 625 GLR</b>
	6 x 31 mm	<b>B ST TNMY 631 GLR</b>


### TruAnatomy® Shaping File - Small (20.04v)

	3 x 21 mm	<b>B ST TNMY 321 SML</b>
	3 x 25 mm	<b>B ST TNMY 325 SML</b>
	3 x 31 mm	<b>B ST TNMY 331 SML</b>
	6 x 21 mm	<b>B ST TNMY 621 SML</b>
	6 x 25 mm	<b>B ST TNMY 625 SML</b>
	6 x 31 mm	<b>B ST TNMY 631 SML</b>


### TruAnatomy® Shaping File - Prime (26.04v)

	3 x 21 mm	<b>B ST TNMY 321 PRM</b>
	3 x 25 mm	<b>B ST TNMY 325 PRM</b>
	3 x 31 mm	<b>B ST TNMY 331 PRM</b>
	6 x 21 mm	<b>B ST TNMY 621 PRM</b>
	6 x 25 mm	<b>B ST TNMY 625 PRM</b>
	6 x 31 mm	<b>B ST TNMY 631 PRM</b>

### TruAnatomy® Shaping File - Medium (36.03v)

	3 x 21 mm	<b>B ST TNMY 321 MED</b>
	3 x 25 mm	<b>B ST TNMY 325 MED</b>
	3 x 31 mm	<b>B ST TNMY 331 MED</b>
	6 x 21 mm	<b>B ST TNMY 621 MED</b>
	6 x 25 mm	<b>B ST TNMY 625 MED</b>
	6 x 31 mm	<b>B ST TNMY 631 MED</b>


### TruAnatomy® Sequence

	3 x 21 mm	<b>B ST TNMY 321 SQC</b>
	3 x 25 mm	<b>B ST TNMY 325 SQC</b>
	3 x 31 mm	<b>B ST TNMY 331 SQC</b>

### TruAnatomy® Assortment

	5 x 21 mm	<b>B ST TNMY 521 AST</b>
	5 x 25 mm	<b>B ST TNMY 525 AST</b>
	5 x 31 mm	<b>B ST TNMY 531 AST</b>

### TruAnatomy® Irrigation Needle

	x40	<b>B NS TNIR D22 30G</b>	30 Gauge
---	-----	--------------------------	----------

### TruAnatomy® Conform Fit® Gutta-Percha Obturation Points

	x60	<b>B 00 TNGP F00 SML</b>	Small
	x60	<b>B 00 TNGP F00 PRM</b>	Prime
	x60	<b>B 00 TNGP F00 MED</b>	Medium
	x60	<b>B 00 TNGP F00 AST</b>	Assortment

### TruAnatomy® Treatment Solution Kit



#### B 00 TNMY TSO KIT

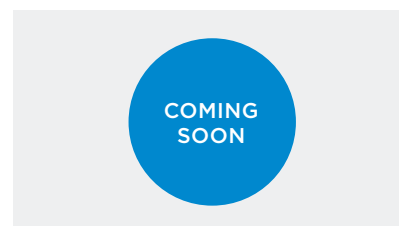
4	<b>TruAnatomy® Sequence</b>	3-Files 25 mm
2	<b>TruAnatomy® Orifice Modifier</b>	3- Files 16 mm
2	<b>TruAnatomy® Glider</b>	3- Files 25 mm
2	<b>TruAnatomy® Small</b>	3- Files 25 mm
2	<b>TruAnatomy® Prime</b>	3- Files 25 mm
2	<b>TruAnatomy® Medium</b>	3- Files 25 mm
1	<b>TruAnatomy® Absorbent Points Assortment</b>	
1	<b>TruAnatomy® Conform Fit® Assortment</b>	
2	<b>Irrigation Needle (5 units)</b>	

### AH Plus® Bioceramic Sealer



Starter Kit	<b>B KT AHBS 000 000</b>
Syringe Refill	<b>B 00 AHBS 100 03G</b>
Cannula Refill	<b>B 00 AHBS 020 24G</b>

### SmartLite Pro EndoActivator™



### TruAnatomy® Absorbent Points

	x180	<b>B ST TNPP 000 SML</b>	Small
	x180	<b>B ST TNPP 000 PRM</b>	Prime
	x180	<b>B ST TNPP 000 MED</b>	Medium
	x180	<b>B ST TNPP 000 AST</b>	Assortment

Files	Maillefer Instruments Holding Sàrl Chemin du Verger 3, CH-1338 Ballaigues	EC REP	Dentsply DeTrey GmbH De-Trey-Straße 1, D-78467, Konstanz	CE	2797
Gutta-Percha & Absorbent Points	Dentsply Tulsa Dental Specialties 608 Rolling Hills Drive, Johnson City, TN 37604		Dentsply DeTrey GmbH De-Trey-Straße 1, D-78467, Konstanz		2797
Irrigation Needle	Produits Dentaires SA, Rue des Bosquets 18, CH-1800 Vevey		PD Dental EU 74200 Thonon-les-Bains, France		1639
AH Plus® Bioceramic Sealer	Maruchi, 2-208, Medical Industry Complex Bldg., 42-10, Taejanggongdan-gil, Wonju-si, Gangwon-do, KR-26311		Biogeri Am Pfeilshof 12, DE-22303 Hamburg		0197